

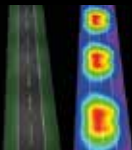
LEDiL



RANGE & PRECISION – LEDiL's standard LED optics offer both

LEDiL is a Finnish manufacturer and supplier of top quality LED secondary optics. We are driven by an innovative 'can do, will do' attitude and willing to run that 'extra mile' to bring to our customers the finest solutions that add real value to their end products. Whether they need reflectors or lenses, asymmetric or symmetric. Our standard product range brings over 1.500 cost-effective optical solutions to our customers' needs.

Application support



Custom solutions



Symmetric



Asymmetric



Reflectors



Arrays



Dear Customer

Please note that you can find ordering codes for products together with the latest product information on our website at:

www.ledil.com

FWHM, efficiency and other values in this catalogue *are typical values* and subject to chosen LED/optic - combination. Actual values can be found on our website.

We have included saved search paths for your convenience. URL to the saved search can be found under each product family name. This address will take you directly to the family listing.

Subscribe our newsletter to get the latest product information at **www.ledil.com/subscribe**

LED compatibility:

Cree

CXA1304
CXA15
CXA1816
CXA2011
CXA25
CXA30
MC-E
MC-E RGB
MK-R
ML-E
MP-L
MT-G
MT-G2
MX-3
MX-6
XB-D
XM-L
XM-L EZVV
XM-L HVV
XM-L RGB
XM-L2
XP-E
XP-E-HEW
XP-E2
XP-G
XP-G2
XR-E
XT-E
XT-E HVV
XQ-E

Osram

DDr
DurisS8
GDr
GDr+
OsISq EC
OsISq PC
OsI SSL150
OsI SSL80
SFH-475 I
Ostar L
Ostar L+
Ostar Pro
Ostar-SMT RGB
PDr
SFH 4715S (IR)
Soleriq S13
Soleriq S19
Soleriq E30

Seoul

MJT4040
P4
P5
P7
Z5
Z5M
Z5P
ZC25/40
ZC6

Avago

Jade

Nichia

COB204
NCSU033
NCSxx19A
NCSxx19B
NF2x757
NJSx036
NS3x83
NS6x83
NS9x153
NS9x383
NSBxL066A
NSBxL110
NSBxL121A
NSCxJ216A
NSCxL036A
NSMx286M
NSSW157T
NVSxx19A
NVSxx19B

Sharp

Double Dome
Mega Zenigata
Mini Zenigata

LED Engin

LZ1 (00U600)
LZ1 (00UA00)
LZ1 (00xW00)
LZ4 (00xW00)

Bridgelux

BXRA ES R
BXRA ES S
BXRA LS
BXRA RS
SM4
Vero10
Vero13
Vero18
Vero29

Citizen

CL-L230
CL-L233
CL-L251
CL-L330
CL-L340
CL-L400
CLL010
CLL020
CLL030
CLL040

Luminus

CSM-360-W
SST-50
SST-90

Optogan

OLP-x5050F6L
OLP-5065F6L-06A

LUXEON

LX A
LX CoB
LX K2
LX K8
LX K12
LX K16
LX K24
LX M
LX PWT
LX R
LX Rebel
LX Rebel ES
LX S
LX S2000
LX S3000
LX S5000
LX T
LX Z
LX Z ES

Stanley

Stanley 6J
Stanley 3J

LG

Cer 3535
COB-4W
COB-10W

Samsung

Sunnix5
LH351A(3535)

DDr = Diamond Dragon
OsISq = Osilon Square
Ostar L = Ostar Lighting

LARISA

www.ledil.com/larisa



LARISA-O
PMMA / Black PC
H: 7,5 mm
D: 9,9 x 9,9 mm
Beam type: Oval



LARISA-W
PMMA / Black PC
H: 7,5 mm
D: 9,9 x 9,9 mm
Beam type: Wide



LARISA-M
PMMA / Black PC
H: 7,5 mm
D: 9,9 x 9,9 mm
Beam type: Medium

Code	Typ. FWHM	Typ. Eff.	Typ. cd/lm
LARISA-M	32	86	2,2
LARISA-O	40 x 22	81	2,1
LARISA-RS	19	80	3,7
LARISA-W	48	85	1,2
LARISA-WW	57	84	0,9
LARISA-RZ	27	77	1,9
LARISA-RZ-CLIP8	25	74	2,8
LARISA-RZ-CLIP16	25	74	2,8



LARISA-RZ
PMMA / Black PC
H: 7,5 mm
D: 9,9x9,9

Cer 3535
XP-G
XB-D
NCsxx19A
NF2x757A
NVsxx19A
OsLSH150
OsSG EC
OsSG PC
LXA
LX Rebel
LX Rebel ES
LX Z

LISA

www.ledil.com/lisa



LISA-SS
PMMA / White PC
H: ≈7,3 mm
D: 10,8 mm
Beam type: Smooth spot



LISA-RS
PMMA / White PC
H: ≈7,3 mm
D: 10,8 mm
Beam type: Real spot

XP-E
XP-G
LX Rebel
GDr
PDr
Z5

LISA2

www.ledil.com/lisa2



LISA2-RS-PIN
PMMA / Black PC
H: ≈6,6 mm
D: 9,9 mm
Beam type: Real spot

LISA2-R-PIN
Hyper Reflective white PC
H: ≈6,6 mm
D: 9,9 mm
Beam type: Extra² wide

Code	Typ. FWHM	Typ. eff.	Typ. cd/lm
LISA2-M	22	89	2,8
LISA2-O	45 x 21	82	2,2
LISA2-O-90	19 x 48	82	2,2
LISA2-O-90-PIN	48+18°	83	TBA
LISA2-RS	19	89	3,1
LISA2-W	34	88	1,8
LISA2-WW	46	89	1,1
LISA2-WWW	80	83	0,4



OsLSa EC
OsLSH150
OsSS180
SFH 7115S (R)
LX Rebel ES
LXA
LX Rebel
LX Z
Double Dome
NCsxx19A
NCsxx19B
NVsxx19A
NVsxx19B
XB-D
XP-E
XP-E2
XP-G
XP-G2
XP-E
XC-E
Z5

The information contained herein is the property of LEDIL Oy, Satorankatu 10, FI-24240 SALO, Finland and is subject to change without prior notice. Please visit www.ledil.com for additional information, such as the latest photometric files, 3D mechanical models, and application notes relating to handling, gluing and taping.

TINA

www.ledil.com/tina



TINA-WW
PMMA / White PC
H: ≈10 mm
D: 16,1 mm
Beam type:
Extra wide

Code	Typ. FWHM	Typ. eff.	Typ. cd/lm
TINA-D	16	92	6,1
TINA-M	29	88	2,1
TINA-O	34 x 15	89	3,4
TINA-RS	13	93	10,9
TINA-W	48	91	1,3
TINA-WW	61	91	0,8

LX A
LX Rebel
LX Rebel ES
GDPr
OsS1150
OsS5180
MX-6
XP-E2
XP-E
XP-G2
XT-E
NS5x83
S535H
Z5

TINA2

www.ledil.com/tina2



TINA2-R-CLIP16
Hyper Reflective white PC
H: 10,1 mm
D: 16,1 mm
Beam type: Wide

Code	Typ. FWHM	Typ. eff.	Typ. cd/lm
TINA2-D	16	89	6,9
TINA2-M	29	86	2,5
TINA2-O	35 x 16	87	3,5
TINA2-RS	14	91	10,4
TINA2-W	46	87	1,37
TINA2-WW	58	87	0,9
TINA2-R	TBA	TBA	TBA



TINA2-SS
PMMA / PC
H: ≈10 mm
D: 16,1 mm
Beam type:
Smooth spot



TINA2-M
PMMA / PC
H: ≈10 mm
D: 16,1 mm
Beam type: Medium

MX-6
XB-D
XM-L2
XM-L
XP-E
XP-E2
XP-E-HEW
XP-G
XP-G2
XT-E
CL-L400
OL P-x5050F-UL
L53
Z57
NS5xx19A
NS5xx19B
NS5x83
NS5x83
NV5xx19A
NV5xx19B
LX A
LX R
LX Rebel
LX Rebel ES
GDPr
OsSq EC
OsSq PC
OsS1150
OsS5180
SFH 47155 (IR)
Z5

TINA3

www.ledil.com/tina3

Code	Typ. FWHM	Typ. eff.	Typ. cd/lm
TINA3-00	59 x 39	90	1,20
TINA3-S	13	77	8,40
TINA3-W	39	90	1,70
TINA3-WW	53	90	1,00
TINA3-WWW	71	88	0,60



TINA3-S
PMMA / White PC
H: 11,5 mm
D: 16,1 mm
Beam type: Spot



TINA3-W
PMMA / White PC
H: ≈7 mm
D: 16,1 mm
Beam type: Wide

OsSq EC
OsS1150
OsS5180
LX A
LX Rebel
LX Rebel ES
DoM Le Dome
Pico Zenitaria
CL-L400
NC5xx19A
NC5xx19B
NV5xx19A
NV5xx19B
XB-D
XM-L
XM-L2
XP-E
XP-E2
XP-G
XP-G2
XT-E
Z5

TWIDDLE

www.ledil.com/twiddle

Code	Typ. FWHM	Typ. eff.	Typ. cd/lm
TWIDDLE-D	20	81	TBA
TWIDDLE-M	32	72	TBA
TWIDDLE-RZ-D	TBA	TBA	TBA
TWIDDLE-RZ-M	TBA	TBA	TBA



TWIDDLE-D
PMMA
H: 14,3 mm
D: 21,6 mm
Beam type: Diffused spot

NS5x83
MX-6
XB-D
XP-G
XP-G2
XT-E

Single lenses

- OsIsq EC
- OsISL150
- OsISL180
- XB-D
- XP-E
- XP-E2
- XP-G
- XP-G2
- XT-E
- Z5
- NCSxx19A
- NCSxx19B
- NCSxx19A
- NCSxx19B
- NF2727
- LX-A
- LX-R
- LX Rebel
- LX Rebel ES
- Double Dome
- Pico Zenigata

HEIDI

www.ledil.com/heidi

NEW!



HEIDI-WR

PMMA, H: 11,7 mm, D: 21,6 mm
Beam type: Oval-90



HEIDI-W2

PMMA
H: 11,7 mm
D: 21,6 mm
Beam type: Wide



HEIDI-O

PMMA
H: 11,7 mm
D: 21,6 mm
Beam type: Oval

Code	Typ. FWHM	Typ. eff.	Typ. cd/lm
HEIDI-D	10	90	14,8
HEIDI-M	26	89	3,8
HEIDI-O	49 x 11	87	4,5
HEIDI-O-90	13 x 44	87	4,7
HEIDI-RS	8	92	21,8
HEIDI-SS	15	90	6,8
HEIDI-W	32	87	2,6
HEIDI-W2	45	80	1,1
HEIDI-WR	31	TBA	TBA

ROSE

www.ledil.com/rose



ROSE Smooth spot

Material: PC / PC
H: 13 mm
D: 21,6 x 21,6 mm



ROSE Extra wide

Material: PC / PC
H: 13,5 mm
D: 21,6 x 21,6 mm



ROSE Medium

Material: PC / PC
H: 15,6 mm
D: 21,6 x 21,6 mm

Beam type code	Typ. FWHM	Typ. eff.	Typ. cd/lm
-D	16	85	7,1
-M	30	83	2,5
-MD	24	TBA	TBA
-O	43 x 15	81	3,1
-O-90	13 x 44	81	3,6
-RS	11	88	21,7
-SS	15	87	9,37
-W	51	81	1,1
-WWW	80	TBA	TBA

- MC-E
- MX-G
- XM-L
- XM-L EZW
- XM-L Z
- XP-E
- XP-E HEW
- XP-G
- XR-E
- XR-E
- P4
- Z5
- GDr+
- 153
- NJSxx036
- NJSxx3
- LX-R2
- LX Rebel
- OL Pxx050FGL

ROSE for UV lighting

Special products made of COP, material with extreme UV-withstanding suitable for various UV-lighting applications.

- FA10857_NIS033U-RS
- FA10911_NIS033U-SS
- FA10912_NIS033U-M
- FA10913_NIS033U-W

NCSU033A UV-LED

Material: COP / PC
H: 14,2 mm
D: 21,6 x 21,6 mm



NCSU033A

The information contained herein is the property of LEDIL Oy, Satorankatu 10, FI-24240 SALO, Finland and is subject to change without prior notice. Please visit www.ledil.com for additional information, such as the latest photometric files, 3D mechanical models, and application notes relating to handling, gluing and taping.

LAURA

www.ledil.com/laura



LAURA-RS

PMMA / PC
H: ≈13 mm
D: 21,6 x 21,6 mm
Beam type: Real spot



LAURA-R-XW

Hyper Reflective
PC / PC
H: ≈13 mm
D: 21,6 x 21,6 mm
Beam type:
Extra² wide



LAURA-O-WAS

PMMA / PC
H: ≈13 mm
D: 21,6 x 21,6 mm
Beam type: Wall
washer

Code	Typ. FWHM	Typ. eff.	Typ. cd/lm
LAURA-D	15	88	6,2
LAURA-M	29	88	2,5
LAURA-O	40 x 12	88	4,3
LAURA-RS	8	93	30,5
LAURA-SS	11	91	14,5
LAURA-W	42	88	1,7
LAURA-WW	66	86	0,70
LAURA-XW	72	85	0,6
LAURA-R-W	70	77	0,52

LAURA-SS-WAS

PMMA / PC
H: ≈13 mm
D: 21,6 x 21,6 mm
Beam type: Wall washer

NEW!



LEILA

www.ledil.com/leila



LEILA-RS

PMMA / PC
H: ≈14 mm
D: 21,6 mm
Beam type: Real spot



LEILA-M

PMMA / PC
H: ≈13 mm
D: 21,6 mm
Beam type: Medium

LEILA-R-CLIP16

Hyper reflective PC
H: 13 mm
D: 21,6 mm
Typ. FWHM: 73°
Typ. efficiency: 90%
Beam type: Extra² Wide

NEW!



Beam type code	Typ. FWHM	Typ. eff.	Typ. cd/lm
-MD	24	90	TBA
-O	39 x 11	88	4,8
-O-90	11 x 39	89	4,6
-REC	37 x 26	84	2,4
-RS	9,6	94	23,1
-RS2	8,5	90	22,1
-SS	12	COP	
-W	42	90	1,6
-WW	42	TBA	TBA

LEILA for UV lighting

Special products made of COP, a material with extreme UV-withstanding suitable for various UV-lighting applications.



FCN12592_LE1-D-COP

LedEngin 5W UV
(365nm)
Material: COP / PC
H: 15,1 mm
D: 21,6 mm
FWHM: 12°
Beam type: Smooth spot
Efficiency: 72%



FCN12592_LE1-D-COP

LedEngin 5W UV
(400 nm)
Material: COP / PC
H: 15,1 mm
D: 21,6 mm
FWHM: 12°
Beam type: Smooth spot
Efficiency: 92%

OsSsq EC
OsSsq PC
Os SSL150
Os SSL80
SFH 47155 (IR)
XB-D
XP-E2
XP-E
XP-E HEW
XP-G
XP-G2
XP-E
XP-E
NCsxx19A
NCsxx19B
NVsxx19A
NVsxx19B
LX-A
LX H50-2
LX Rebel
LX Rebel ES
LX Z ES
Double Dome
Pico Zeniqata
Z5

NCsxx19A
NCsxx19B
NVsxx19A
NVsxx19B
D-D
GD+
OsSsq EC
Os SSL150
Os SSL80
Ostar L+
MC-E
MX-G
XB-D
XM-L
XP-E
XP-E HEW
XP-E2
XP-G
XP-G2
XP-E
XP-E
XP-E
LX L400
LX Rebel
LX Rebel ES
LX T
LX Z ES
P4
Z5
Sunnix5
LE SW
OLPsxx050PF

FWHM angles, efficiencies and cd/lm values contained herein are average values. Actual measured values depend of the specific LED/optic combination. Go to www.ledil.com for the LED specific values and optic datasheets.

Single lenses

SFH 4715S (IR)

IRENE

www.ledil.com/irene



IRENE-IR-4
PMMA / PC
H: 14,3 mm
D: 21,6 mm
FWHM: 66° + 60°
(sim.)



IRENE-IR-8
PMMA / PC
H: 14,3 mm
D: 21,6 mm
FWHM: 36° + 34°
(sim.)



IRENE-IR-16
PMMA / PC
H: 14,3 mm
D: 21,6 mm
FWHM: 20° + 19°
(sim.)



IRENE-IR-25
PMMA / PC
H: 14,3 mm
D: 21,6 mm
FWHM: 11° + 9°
(sim.)



IRENE-IR-12
PMMA / PC
H: 14,3 mm
D: 21,6 mm
FWHM: 26° + 25°
(sim.)

TITANIUM / SPUTNIK

www.ledil.com/products

TITANIUM / SPUTNIK family of optics for Osram and Seoul LEDs. Versions that have ordering code ending with -C have metallized coating making them suitable for potting. Go to www.ledil.com for specific order codes and more information.

GDr1
PDr
P4
P5

Code	Typ. FWHM	Typ. eff.
TITANIUM/SPUTNIK-M	26	87
TITANIUM/SPUTNIK-O	36 X 8	89
TITANIUM/SPUTNIK-SS	9	84
TITANIUM/SPUTNIK-W	66	71



TITANIUM/ SPUTNIK-90-C
PMMA / PC
H: 14,3 mm
D: 21,6 mm
Beam type: Oval

EMILY

www.ledil.com/emily



EMILY-O-WAS

PMMA,
H: 14,8 mm,
D: 26 mm
Beam type: Tilted oval

Code	Typ. FWHM	Typ. eff.	Typ. cd/lm
EMILY-SS-WAS	8	90	12
EMILY-O-WAS	43 x 10	87	3,6
EMILY-D	11	91	14
EMILY-M	18	91	7,4
EMILY-M2	29	89,2	3,05
EMILY-O	44 x 10	89	4,5
EMILY-O-90	45 x 10	89	4,2
EMILY-SS	11	80	13,4
EMILY-W	39	86	1,5
EMILY-WWW	58	86	1
EMILY-RS	8	90	29,5



EMILY-M

PMMA
H: 15,1 mm
D: 26 mm
Beam type: Medium



EMILY-WWW

PMMA
H: 13,3 mm
D: 26 mm
Beam type: Extra² wide



EMILY-O

PMMA
H: 15,1 mm
D: 26 mm
Beam type: Oval

Double Dome
Pico Zenigata
LX Rebel
LX A
LX T
LX Rebel ES
OsSq EC
OsSq PC
Os SSL80
Os SSL150
NCSxx19A
NCSxx19B
NCSxx19A
NCSxx19B
NS9x283
XP-E
XP-E2
XP-G
XP-G2
XM-L
XM-L2
Z5

The information contained herein is the property of LEDIL Oy, Salorankatu 10, FI-24240 SALO, Finland and is subject to change without prior notice. Please visit www.ledil.com for additional information, such as the latest photometric files, 3D mechanical models, and application notes relating to handling, gluing and taping.

MC-E
MKR
XM-L
XM-L-EZW
XM-L-HVV
XM-L-Z
XT-E
XP-G2
NS9x383
NSMx286M
LX-M

EVA

www.ledil.com/eva



EVA-S

PMMA
H: 16,4 mm
D: 35 mm
Beam type: Spot



EVA-O

PMMA
H: 16,4 mm
D: 35 mm
Beam type: Oval

Code	Typ. FWHM	Typ. eff.	Typ. cd/lm
EVA-D	16	80	4,92
EVA-M	24	89	3,2
EVA-O	38 x 17	85	3,06
EVA-S	13	93	
EVA-W	40	83	1,4
EVA-WW	53	82	1,7
C10685 EVA-M	26	89	2,8



EVA-M

PMMA / PC
H: 16,4 mm
D: 37,7 mm
Beam type: Medium



EVA-WW

PMMA / PC
H: 16,4 mm
D: 37,7 mm
Beam type: Extra wide

MIRA

www.ledil.com/mira



MIRA-W

PC
H: 14,7 mm
D: 32,4 mm
Beam type: Wide



MIRA-M

PC / PC
H: ≈16 mm
D: ≈35 mm
Beam type: Medium



MIRA-WW

PC / PC
H: ≈16 mm
D: ≈35 mm
Beam type: Extra wide

Code	Typ. FWHM	Typ. eff.	Typ. cd/lm
MIRA-M	28	83	2,1
MIRA-W	38	82	1,5
MIRA-WW	58	83	0,9

BXR ES S
CYA1S
MT-G
MT-G2
LX-M
LX-K4
NSCxl036A
NSMx286M

SIRI-A

www.ledil.com/siri



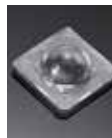
SIRI-A

PMMA
H: 13,9 mm
D: 4,2 mm
Beam type: Wide area lighting



SIRI-DOME

PMMA
H: 13,9 mm
D: 4,9 mm
LED cover with no effect on the light



SIRI-DIFF

PMMA
H: 13,9 mm
D: 4,9 mm

SIRI family is a series of specialty optics for wide area lighting applications.

XM-L
XT-E
OsSg-EC
OsSg-PC
NS9x383
NV5xx19A
NV5xx19B
LX-A
LX-R

EYA

www.ledil.com/eya



EYA-O

PMMA / PC
H: 29,1 mm
D: 30,4 mm
Beam type: Oval



EYA-S

PMMA / PC
H: 29,1 mm
D: 30,4 mm
Beam type: Spot

PDr

FWHM angles, efficiencies and cd/lm values contained herein are average values. Actual measured values depend of the specific LED/optic combination. Go to www.ledil.com for the LED specific values and optic datasheets.

Single lenses

CRYSTAL

www.ledil.com/crystal

- 4° beam and even over 110 cd/lm peak values can be achieved. Which is 170 times more intense peak than with a LED alone.
- No dark or bright spots, No halos
- Optical efficiency of up to 92%



CRYSTAL-MINE

PMMA
H: 27,4 mm
D: 46,8 mm
Beam type: Spot

NEW!



CRYSTAL-RS

PMMA
H: 27,4 mm
D: 46,8 mm
Beam type: Real spot
FWHM (sim.): 4°

LX A
LX M
LX Rebel
LX Rebel E5
NC519
NV519
OsS150
OsS180
XB-D
XMBL
XP-E
XP-G
XP-E
XP-E
Z5

FLARE

www.ledil.com/flarefamily



FLARE-MINI-A

PMMA
H: 8,6 mm
D: 16 mm
Beam type: Oval



FLARE-C

PMMA
H: 14,6 mm
D: 24,5 x 24,5 mm
Beam type: Rectangular



FLARE-MAXI-D

PMMA
H: 16,7 mm
D: 33,9 x 33,9 mm
Beam type: Rectangular

Code	Typ. FWHM	Typ. eff.	Typ. cd/lm
FLARE-B	102 x 11	93	1,6
FLARE-C	87 x 8	93	3,2
FLARE-C-D	95 x 21	93	1
FLARE-MAXI	99 x 13	94	2,3
FLARE-MAXI-D	108 x 15	94	1,8
FLARE-MINI-A	106 x 20	94	1,1
FLARE-MINI-AD	98 x 19	94	1,1
FLARE-MINI-AD-PIN	98 x 19	94	1,1
FLARE-MINI-A-PIN	106 x 20	94	1
LEDIL-FLARE	138 x 20	92	1,3



FLARE-MAXI

PMMA
H: 16,7 mm
D: 33,9 x 33,9 mm
Beam type: Rectangular



FLARE-MINI-AD

PMMA
H: 8,6 mm
D: 16 mm
Beam type: Oval

Car 3535
LX A
LX B2
LX H50-2
LX M
LX Rebel
LX Rebel E5
Dovle Dome
Pico Zenitata

NCsxx19A
NCsxx19B
NSxx383
NVsxx19A
NVsxx19B
OsEq EC
OsEq PC
OsS150
OsS180
MkR
XB-D
XMBL
XMBL
XP-E
XP-E
XP-G
XP-G
XP-E
XP-E
Z5

IRIS

www.ledil.com/iris



IRIS-O

PMMA / PC
H: ≈29 mm
D: 38 mm
Beam type: Oval



IRIS

PMMA / PC
H: ≈29 mm
D: 38 mm
Beam type: Spot



IRIS-M

PMMA / PC
H: ≈29 mm
D: 38 mm
Beam type: Medium

Code	Typ. FWHM	Typ. eff.	Typ. cd/lm
IRIS-M	26	86	2,7
IRIS-O	39 x 28	84	1,9
IRIS-RS	5	93	66
IRIS-RS2	9	91	19,2
IRIS-S	13	89	10,9

M-C-E
XMBL
XP-E
XP-E
XP-G
XP-G
OsS150
OsS180
OsS180
SFH 47155 (tr)
LX M
LX Rebel
LX Rebel E5
LX T
NCsxx19A
NCsxx19B
NVsxx19A
NVsxx19B
S150
S190

The information contained herein is the property of LEDIL Oy, Salorankatu 10, FI-24240 SALO, Finland and is subject to change without prior notice. Please visit www.ledil.com for additional information, such as the latest photometric files, 3D mechanical models, and application notes relating to handling, gluing and taping.

BILLIE

www.ledil.com/billie



BILLIE-A

PMMA / PC
H: 16.1 mm
D: 21.5 mm
Beam type: Asymmetric

JULIA-A

www.ledil.com/julia



JULIA-A

PMMA
H: 4.8 mm
D: 18.8 mm
Beam type: Wide area lighting

IRINA

www.ledil.com/irina



IRINA-RS

PMMA / PC
H: 11,7 mm
D: 24,7 mm
Beam type: Real spot

KIKI

www.ledil.com/products



KIKI-A

PMMA
H: 5.9 mm
D: 21,6 x 14 mm
Beam type: Wide-Area Lighting

Code	Typ. FWHM	Typ. eff.	Typ. cd/lm
KIKI-A	TBA	TBA	TBA
KIKI-B	TBA	TBA	TBA

AMELIA

www.ledil.com/julia

AMELIA-S

PMMA
H: 45 mm
D: 27,1 mm
Beam type: Spot

VERONICA

www.ledil.com/veronica



VERONICA-RS

PMMA
H: 26 mm
D: 12,2 mm
Beam type: Real Spot

Code	Typ. FWHM	Typ. eff.	Typ. cd/lm
VERONICA-O	54 + 11°	84	4,2
VERONICA-RS	12	90	18,4
VERONICA-SQ-O	56+12	82	3,2

SEANNA-A

www.ledil.com/products

SEANNA-A

PMMA
D: 65mm
Beam type: Real Spot

Code	Typ. FWHM	Typ. eff.	Typ. cd/lm
SEANNA-A	TBA	TBA	TBA

HELENA

www.ledil.com/helena

LX K8
LX K12
LX K16



Diamond turning is the production method used to produce some of the very highest class optics in the world. We have used it to make HELENA, fresnel type lens having surface accuracy down to a hundredth of a millimeter. This means better light control and efficiency – lighting the LEDiL way.

HELENA-A

PMMA
H: 11 mm
D: 72,8 mm
Beam type: Medium



HELENA-B

PMMA / PC
H: 11 mm
D: 72,8 mm
Beam type: Medium

RGB-MIXING

www.ledil.com/rgb

LZ4 RGB
MC-E
MC-E RGB
XM-L RGB
Ostar-SMT RGB



- LEDiL patented technology
 - Proprietary and patented microstructured surfaces
- Typical applications:
- RGBX for stage lighting and architectural applications
 - Adaptive color temperature
 - Perfect CRI

REBECCA

PMMA / PC
H: 30,4 mm



GERI-RZ

PMMA
H: 7,3 mm
D: 45 mm
Beam type: Spot
FWHM (sim.): 10°

Code	Typ. FWHM	Typ. eff.	Typ. cd/lm
RGBX-M	30	TBA	TBA
RGBX-O	48+25	TBA	TBA
RGBX-SS	20	85	3,8
RGBX-HLD	TBA	TBA	TBA
RGBX2-M	34	68	1,5
RGBX2-O	48+24	66	1,5
RGBX2-S	20	77	4,6

SAGA

www.ledil.com/saga

SAGA-HB-IP-WHT

Silicone
H: 12 mm
D: 50 mm
Beam type: HighBay



CLL010
CLL020
CLL030
CXA1304
CXA1816
CXA15
Vero10
Soleriq S13
Mini Zenigata

- TIR lens in optical grade silicone
- Precision-molded frame in Hyper-Reflective White PC
- Zhaga compliant fastening with two M3 screws 35 mm apart
- Optical efficiency of up to 92 %

STELLA-A

www.ledil.com/stella

STELLA-A

Silicone
H: 22 mm
D: 90 mm
Beam type: Asymmetric



CLL030
CLL040
LX A12
LX A16
LX CoB
CXA15
CXA25
CXA30
CXA1816
Vero13
Vero18
Soleriq S19
Soleriq S13

- Self-sealing design simplifies luminaire design
- Very good thermal and UV resistance
- Type II / Type III light distribution depending on LES size
- Excellent efficiency

EMERALD

www.ledil.com/emerald

EMERALD-A

PMMA
H: 7,3 mm
D: 21,6 mm
Beam type: Rectangular
Typical FWHM: 150° x 20°



Cer 3535
XB-D
XHL
XP-E
XP-E2
XP-G
XP-G2
XT-E
OsSq EC
OsSq PC
Os SSL150
Os SSL80
Z5
LX A
LX R
LX Rebel
LX Rebel ES
LX T
NCsxx19A
NVsxx19A

Cost effective and new one-LED, one-optic solution for exit route lighting. With EMERALD's extremely wide beam distribution it's possible to achieve EN 1838 compliant lighting for installation height to distance ratios up to and beyond 1:7. Extended illumination range and single LED design reduces costs of the fixture and installation significantly.

DOROTHY

www.ledil.com/dorothy

DOROTHY-4-A

PMMA
H: 4,5 mm
D: 50,6 mm
Beam type: Wide area



XP-E
XP-G
XT-E
XP-G2
LX A
LX R
LX Rebel
LX Rebel ES
NCsxx19A
NCsxx19B
NVsxx19A
NVsxx19B

DOROTHY is an array of 4 side-emitting optics. It is designed for wide area lighting applications, especially anti-panic area lights.

Code	Beam Type	Typ. FWHM	Typ. eff.	Typ. cd/lm
DOROTHY-4-A	Wide area	152	94	0,3
DOROTHY-4-B	Side-Emitting	TBA	TBA	TBA

FWHM angles, efficiencies and cd/lm values contained herein are average values. Actual measured values depend of the specific LED/optic combination. Go to www.ledil.com for the LED specific values and optic datasheets.

Specialty products

LX A
LX Rebel
LX Rebel ES

LOTTA-A

www.ledil.com/products



LOTTA-A
PMMA
H: 3,6 mm
D: 19,6 + 15,4 mm
Beam type: Wide area lighting

XP-G

FRIDA-A

www.ledil.com/products



FRIDA-A
PMMA
H: 9,7 mm
D: 12,2 + 7,9 mm
Beam type: Wide area lighting

OsIq EC
OsIq PC

OONA-A

www.ledil.com/products



OONA-A
PMMA
H: 4,5 mm
D: 9,9 x 9,9 mm
Beam type: Oval

Cer 3535

XB-D
XP-G
XP-G2
LX A
LX Rebel
OsIq EC
NCsxx19A
NCsxx19B
NVsxx19A
NVsxx19B

EMMA

www.ledil.com/products



EMMA-A
PMMA
H: 5,7 mm
D: 9,9 x 9,9 mm
Beam type: Side emitter

VENLA-IRIS

www.ledil.com/venla



LX S

VENLA-S-IRIS

PMMA / PC
H: 27,2 mm
D: 45 mm
Beam type: Spot

SOPHIE

www.ledil.com/products



XP-C

XT-E

XP-E

XB-D

OsIq PC

OsIq SSL80

OsIq SSL150

NF2x757

NCsxx19A

NCsxx19B

NVsxx19A

NVsxx19B

LX Rebel

LX Rebel ES

LX T

LX R

SOPHIE

PMMA
H: 10,4 mm
D: 150 mm
Beam type: Asymmetric

STRADA-S

www.ledil.com/products



STRADA-S
PMMA
H: 6,9 mm
D: 19,6 x 15,5 mm
Beam type: Side emitter



STRADA-S-14
PMMA
H: 6,5 mm
D: 19,6 x 13,8 mm
Beam type: Side emitter

LX A

LX Rebel

LX Rebel ES

NCsxx19A

NCsxx19B

NVsxx19A

NVsxx19B

OsIq EC

OsIq SSL150

OsIq SSL80

Double Dome

Pico Zeninatat

XP-E

XP-G

Z5

BOOM

www.ledil.com/boom



BOOM-M

Metallized PC
H: ≈14 mm
D: 22,2 mm
Beam type: Medium



BOOM-XW

Hyper Reflective PC
H: ≈14 mm
D: 22,2 mm
Beam type: Extra² W

MC-E
XR-E
LX-M
AX3221
P7

Ordering Code	Typ. FWHM	Typ. cd/lm
BOOM-M	32	1,9
BOOM-S	18	3,6
BOOM-W	55	1,1
BOOM-XW	70	0,67



BOOM-S

Metallized PC
H: ≈14 mm
D: 22,2 mm
Beam type: Spot

BRIDGET / LILY / CINDY

www.ledil.com/products



-S

Metallized PC
H: 12,8 mm
D: 22,6 mm
Beam type: Spot

CXA15
COB-L110
EXTRA SS3
CL-L233
CL-L020
CL-L251
Mini Zenigata
SST-50
SST-90

Code	Typ. FWHM	Typ. eff.	Typ. cd/lm
-M	41	87	1,5
-S	31	89	1,5
-W	57	88	1,1
BRIDGET-S-UNI	44	85	1,0
BRIDGET-M-UNI	52	84	1,1
BRIDGET-W-UNI	61	87	1,0



-M

Metallized PC
H: 12,8 mm
D: 22,6 mm
Beam type: Medium

TYRA / TYRA2 / TYRA3

www.ledil.com/tyra



TYRA-S

Metallized PC
H: 23,1 mm
D: 40 mm
Beam type: Spot

CL-L233
MPL
NSBL110

Code	Typ. FWHM	Typ. cd/lm
-M	32	90
-S	20	89
-W	47	91
-WW	64	90



TYRA3-WW

Metallized PC
H: 22,5 mm
D: 40 mm
Beam type:
Extra wide

MINNIE

www.ledil.com/minnie

Available with or without holder.
Diameter 35 mm (32,4 mm
without holder), typical
height ≈15 mm.



CXA15
MTEG
MTE2
MTE3
LX-M
NSMx286M

Code	Typ. FWHM	Typ. eff.	Typ. cd/lm
MINNIE-M	24	72	2,6
MINNIE-W	33	76	2
MINNIE-WWW	69	91	0,9
MINNIE-XW	90	92	0,5

FWHM angles, efficiencies and cd/lm values contained herein are average values. Actual measured values depend of the specific LED/optic combination. Go to www.ledil.com for the LED specific values and optic datasheets.

BARBARA

www.ledil.com/barbara

Code	Typ. FWHM	Typ. eff.
BARBARA-S	17	90
BARBARA-S-PF	TBA	TBA
BARBARA-S-PF-CXA15	21	86
BARBARA-S-PF-VERO10	21	88
BARBARA-S-PF-VERO13/18	TBA	TBA
BARBARA-W-PF	TBA	TBA
BARBARA-W-PF-CXA15	24	85
BARBARA-W-PF-VERO10	29	78
BARBARA-W-PF-VERO13/18	TBA	TBA
BARBARA-WW-PF	TBA	TBA
BARBARA-WW-PF-CXA15	64	84
BARBARA-WW-PF-VERO10	68	77
BARBARA-WW-PF-VERO13/18	TBA	TBA
BARBARA-XW	75	90
BARBARA-XW-PF	74	91



BARBARA-XW

Hyper Reflective PC
H: 44,7 mm
D: 70 mm
Beam type: Extra²W



BARBARA-S

Metallized PC
H: 44,7 mm
D: 70 mm
Beam type: Spot

BXRA ES R
Vero10
Vero13
Vero18
CXA2011
CXA15
NCsxx110
CL-L330
CLL030

RITA

www.ledil.com/rita



RITA-A

Hyper Reflective PC
H: ≈17 mm
D: 36 x 28,4 mm
Beam type: Asymm.



RITA-WAS

Hyper Reflective PC
H: ≈17 mm
D: 31,9 x 28,4 mm
Beam type: Asymm.

OdSxxEC
LX-A
LX-M
LX Rebel ES
LX-T
MK-R
XB-D
XML
XP-E
XP-G
XP-G2
XT-E
NSxx383
NCsxx19A
NCsxx19B
NVsxx19A
NVsxx19B

BOOMERANG

www.ledil.com/boomerang



BOOMERANG

Metallized PC
H: ≈14 mm
D: 22,2 mm
Beam type: Spot

Ostar L
LE 10W
LE 5W

REGINA

www.ledil.com/products



REGINA

Metallized PC
H: 15,3 mm
D: 19 mm
Beam type: Real spot

LX Rebel
LX Rebel ES
OdSSL150
OdSSL80
NCs19
NVs19
XP-E
XP-G
Z5

BXRA ES R
 BXRA ES S
 CL-L330
 CL-L330
 CXA2011

BROOKE

www.ledil.com/brooke



BROOKE-S

Metallized PC
 H: 20,1 mm
 D: 45 mm
 Beam type: Spot



BROOKE-W

Metallized PC
 H: 21,1 mm
 D: 45 mm
 Beam type: Wide

BROOKE-SCR-M

Metallized PC
 H: 20,2 mm
 D: 45 mm
 Beam type: Medium



Code	Typ. FWHM	Typ. eff.	Typ. cd/lm
BROOKE-M	28	92	2,2
BROOKE-SCR-M	24	91	2,5
BROOKE-S	24	94	
BROOKE-SCR-W	42	91	1,2
BROOKE-W	46	92	1,24

LX S

VENLA

www.ledil.com/venla

VENLA-WW

Metallized PC
 H: 25 mm, D: 45 mm
 Beam type: Extra wide



Code	Typ. FWHM	Typ. eff.
C11773 VENLA-S	13	TBA
C11775 VENLA-M	28	90
C11776 VENLA-W	45	TBA
C11777 VENLA-WW	56	87
CP12090 VENLA-S-IRIS	18	93

BXRA RS

BRITNEY

www.ledil.com/britney

BRITNEY-XW

Hyper Reflective PC
 H: 38,4 mm, D: 70 mm
 Beam type: Extra² Wide
 FWHM: 74°



BRITNEY-M

Metallized PC
 H: 38,4 mm
 D: 70 mm
 Beam type: Medium
 FWHM: 28°



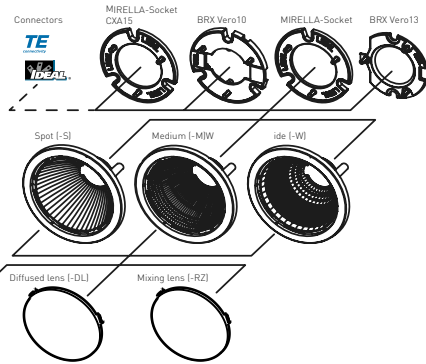
BRITNEY-W

Metallized PC
 H: 38,4 mm
 D: 70 mm
 Beam type: Wide
 FWHM: 48°

MIRELLA

www.ledil.com/mirellafamily

- Manufactured from impact-resistant, UL 94 V-2 rated, polycarbonate
- Available with an optional clear, diffusing or mixing lens, molded from PMMA
- Optimized for use with larger single-die lighting class LEDs and COB array LEDs



MIRELLA-50-S

Metallized PC
H: 23,9 mm
D: 49,9 mm
Beam type: Spot



MIRELLA-50-M

Metallized PC
H: 23,9 mm
D: 49,9 mm
Beam type: Medium



MIRELLA-50-W-DL

Metallized PC / PC
H: 23,9 mm
D: 49,9 mm
Beam type: Wide



CN13905_MIRELLA-50-S-PF-RZL

Metallized PC / PC
H: 24,8 mm
D: 49,9 mm
Beam type: Spot

Code	Typ. FWHM	Typ. Eff.	Typ. cd/lm	Fastening
MIRELLA-50-M	27	90	2,8	glue
MIRELLA-50-M-CL				
MIRELLA-50-M-CL-PF				
MIRELLA-50-M-DL	34	84	1,9	glue
MIRELLA-50-M-DL-PF				
MIRELLA-50-M-PF				
MIRELLA-50-M-PF-RZL				
MIRELLA-50-M-PF-VERO10				
MIRELLA-50-M-PF-VERO13/18				
MIRELLA-50-M-PIN	23	86	3,2	pin
MIRELLA-50-M-PIN-CL				pin
MIRELLA-50-M-PIN-DL	34	80	1,6	pin
MIRELLA-50-M-PIN-RZL				pin
MIRELLA-50-M-RZL				
MIRELLA-50-S	15	92	8,5	glue
MIRELLA-50-S-CL-PF				
MIRELLA-50-S-DL	20	85	4,9	glue
MIRELLA-50-S-DL-PF				
MIRELLA-50-S-PF	17	88	5,4	socket, screw
MIRELLA-50-S-PF-RZL				
MIRELLA-50-S-PF-VERO10				
MIRELLA-50-S-PF-VERO13/18				
MIRELLA-50-S-PIN	11	87	12,3	pin
MIRELLA-50-S-PIN-DL	15,3	82	5,5	pin
MIRELLA-50-S-PIN-RZL				pin
MIRELLA-50-S-RZL				
MIRELLA-50-W	41	90	1,6	glue
MIRELLA-50-W-CL				
MIRELLA-50-W-CL-PF				
MIRELLA-50-W-DL	47	83	1,2	glue
MIRELLA-50-W-DL-PF				
MIRELLA-50-W-PF				
MIRELLA-50-W-PF-RZL				
MIRELLA-50-W-PF-VERO10				
MIRELLA-50-W-PF-VERO13/18				
MIRELLA-50-W-PIN	33	86	1,6	pin
MIRELLA-50-W-PIN-CL				pin
MIRELLA-50-W-PIN-DL				pin
MIRELLA-50-W-PIN-RZL				pin
MIRELLA-50-W-RZL				
MIRELLA-RZL				
MIRELLA-SOCKET-VERO10				
MIRELLA-SOCKET-VERO13/18				

COB-4W
CXA1304
CXA15
CXA1816
MC-E RGB
MT-G
MT-G2
XML
XML-L2
XML-RGBW
XP-G
XP-G2
XPE
NS9x066A
NS9x383
NSCv.036A
Duris58
OsSo-FC
Ostar-Lt
Ostar-SMT RGB
BXRA LS
SM4
CLL010
CLL020
Mini Zenigata
LXA
LXM
LXS
LXCoB
LZ4 RGB
ZCo

One system,
endless possibilities



- CXA2011
- CXA25
- NSCxl216A
- NSBxl066A
- NSBxl110
- NSBxl121A
- COB204
- Solarig E30
- BXRA ES R
- BXRA RS
- Vero13
- Vero18
- Vero29
- CLL340
- CLL030
- CLL040
- LX K12
- LX K16
- LX CoB 1204/1205
- LX CoB 1208
- Micra Zenigata
- ZC12/18
- ZC25/40

LENA

www.ledil.com/lenafamily

Code	Beam type	Diameter	Height	Typ. FWHM	Typ. Eff.	Typ. cd/lm
LENA-M	M	111	86	22	83	2,5
LENA-M-DL	M	111	87	22	77	3,4
LENA-S	S	111	86	11	85	7,6
LENA-S-DL	S	111	87	14	80	5,6
LENA-SS	SS	111	84,6	18	82	5
LENA-SS-DL	SS	111	87	16	74	5
LENA-W	W	111	85,4	46	82	1,3
LENA-WAS	WAS	111	39,1	Asym	82	1,1
LENA-WAS-DL	WAS	111	41,2	Asym	76	0,86
LENA-W-DL	W	111	87	45	75	1,3
LENA-X-WAS	WAS	111	39,6	Asym	87	
LENA-X-WAS-DL	WAS	111	42	Asym	80	
LENA-STD-BASE-VERO13-18						
LENA-STD-BASE-VERO29						

LENINA

www.ledil.com/lenafamily

Code	Beam type	Diameter	Height	Typ. FWHM	Typ. Eff.	Typ. cd/lm
LENINA-M	M	74	46	31	87	2,1
LENINA-M-DL	M	74	48	35	80	1,6
LENINA-S	S	74	46	19	88	4,5
LENINA-S-DL	S	74	48	23	81	3,1
LENINA-W	W	74	46	53	87	1,1
LENINA-W-DL	W	74	48	54	80	1
LENINA-XW	XW	74	47	73	89	0,6
LENINA-XW-DL	WWW	74	48,6	68	82	0,6

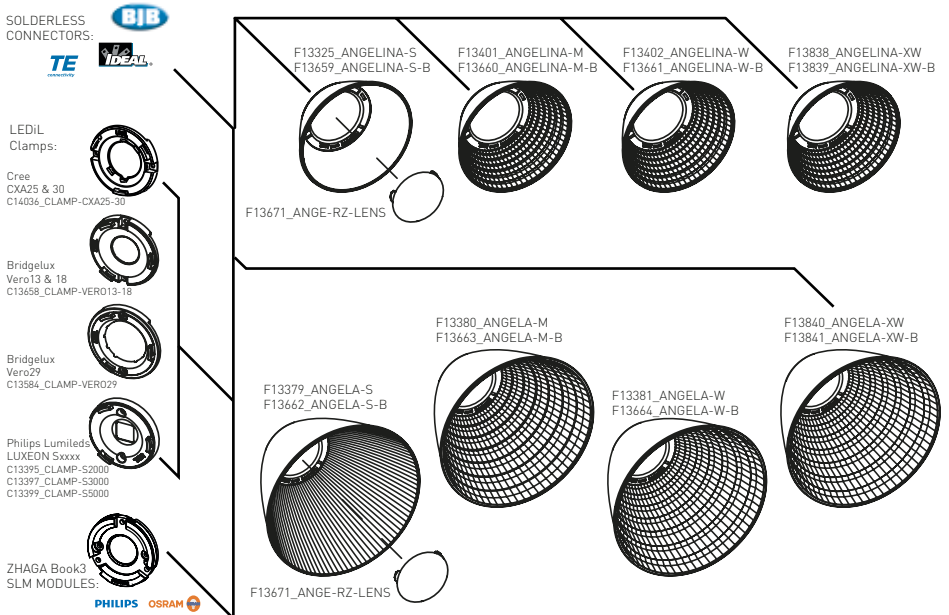
FWHM angles, efficiencies and cd/lm values contained herein are average values. Actual measured values depend of the specific LED/optic combination. Go to www.ledil.com for the LED specific values and optic datasheets.

ANGELA / ANGELINA

www.ledil.com/products

Code	Beam type	Diameter	Height	Typ. FWHM	Typ. Eff.	Typ. cd/lm
ANGELA-S	Spot	119,5	79,3	25	89	3,2
ANGELA-M	Medium	119,5	79,3	32	89	2,5
ANGELA-W	Wide	119,5	79,3	46	89	1,4
ANGELA-XW	Wide	119,5	74,5	TBA	TBA	TBA
ANGELA-XW-B	Wide	119,5	74,5	36	93	2,1

ANGELINA-S	Spot	82	31	39	90	1,2
ANGELINA-M	Medium	82	31	32	92	1,6
ANGELINA-W	Wide	82	31	47	92	1,1
ANGELINA-RZ-S	Spot	82	31	31	88	1,4
ANGELINA-RZ-M	Medium	82	31	TBA	TBA	TBA
ANGELINA-RZ-W	Wide	82	31	TBA	TBA	TBA
ANGELINA-XW	Wide	82	31	91	93	0,46
ANGELINA-XW-B	Wide	82	31	91	94	0,53
ANGELINA-M-B	Medium	82	31	39	91	1,3
ANGELINA-W-B	Wide	82	31	51	91	1,0



The information contained herein is the property of LEDIL Oy, Salorankatu 10, FI-24240 SALO, Finland and is subject to change without prior notice. Please visit www.ledil.com for additional information, such as the latest photometric files, 3D mechanical models, and application notes relating to handling, gluing and taping.

SATU

www.ledil.com/satu



SATU-M

3 LEDs
PMMA
H: 8,9 mm
D: 21,8 mm
Beam type: Medium



SATU-O

3 LEDs, PMMA
H: 8,9 mm, D: 21,8 mm
Beam type: Oval

Code	Typ. FWHM	Typ. eff.	Typ. cd/lm
SATU-M	27	91	2,9
SATU-O	42 x 22	86	2,5
SATU-S	19	90	4,9
SATU-W	33	86	1,9

Cer 3535
XB-D
XP-E
XP-G
XP-G2
XT-E
XP-E2
Os SSL150
Os SSL80
Os5g EC
NCsxx19A
NCsxx19B
NVsxx19A
NVsxx19B
LX-A
LX Rebel
LX Rebel ES
LX-T
Z5

CUTE

www.ledil.com/cute

Code	Beam type	LEDs	Diameter	Height	Typ. FWHM	Typ. eff.	Typ. cd/lm
CUTE-3-M	M	3	35	15	24	88	3,8
CUTE-3-S	S	3	35	15	11		
CUTE-3-SS	SS	3	35	15	12	90	11,3
CUTE-3-W	W	3	35	15	39	83	1,6
CUTE-3-WW	WW	3	35	15	TBA	TBA	TBA
CUTE-4-M	M	4	35	15	22	84	4,26
CUTE-4-SS	SS	4	35	15	11	88	13,2
CUTE-4-W	W	4	35	15	38		



MX-6
XM-L
XM-L HWV
XP-E
XR-E
XT-E
XT-E HWV
Z5
Os5g EC
Os SSL150
Os SSL80
PDI
NCs19
Cer 3535
LX-A
LX Rebel
LX Rebel ES
LX-T
Double Dome
XP-G1

GT3

www.ledil.com/gt3

Name	Beam type	Diameter	Height	Typ. FWHM	Typ. eff.	Typ. cd/lm
GT3-M	M	35	9	30	89	2,2
GT3-S	S	35	9	18	90	4,5
GT3-W	W	35	9	40	88	1,6
GT3-WW	WW	35	9	47	90	1,1



GT3-M

3 LEDs
PMMA
H: 9 mm
D: 35 mm
Beam type: Medium



GT3-WW

3 LEDs
PMMA
H: 9 mm
D: 35 mm
Beam type: Extra wide

LX-A
LX Rebel
LX Rebel ES
Os5g EC
Os SSL150
Os SSL80
XB-D
XP-E
XP-G
NCsxx19A
NCsxx19B
NVsxx19A
NVsxx19B
Double Dome
Z5

GT4

www.ledil.com/gt4

Name	Beam	Diameter	Height	Typ. FWHM	Typ. Eff	Typ. cd/lm
GT4-M	M	35	9	28	88	2,5
GT4-S	S	35	9	21	90	3,3
GT4-W	W	35	9	38	89	1,7
GT4-WW	WW	35	9	53	90	1,1



LX-A
LX Rebel
LX Rebel ES
Os5g EC
Os SSL150
Os SSL80
XB-D
XP-E
XP-G
NCsxx19A
NCsxx19B
NVsxx19A
NVsxx19B
Double Dome
Z5

FWHM angles, efficiencies and cd/lm values contained herein are average values. Actual measured values depend of the specific LED/optic combination. Go to www.ledil.com for the LED specific values and optic datasheets.

Multi-lens arrays

ANNA

www.ledil.com/anna

One of LEDiL's largest and most popular product families. ANNA family is versatile with optics in two diameters, wide selection of beam angles and sources.

ANNA-50-5-S



Cer 3535
 OsSq EC
 OsSq PC
 Ostar L4
 Ostar-SMT RGB
 SFH 4715S (IR)
 OsLS1450
 OsLS180
 ML-E
 XB-D
 XM-L
 XM-L2
 XP-E
 XP-E2
 XP-G
 XP-G2
 XPE
 LX-A
 LX Rebel
 LX Rebel ES
 LX R
 LX T
 Double Dome
 Pico Zenigata
 NC519
 NV319
 NF2x757A
 NSSW157L
 NS9x153
 NS9x383
 LH351A(3535)
 SMA
 ZS

Name	Beam type	LED sources	D	H	Typ. FWHM	Typ. efficiency	Typ. cd/lm					
ANNA-40-3-M	M	3	40	10,7	22	88	3,7					
ANNA-40-4-M		4										
ANNA-40-5-M		5										
ANNA-40-6-M		6										
ANNA-40-7-M		7										
ANNA-50-3-M		3						50	10,7	25	87	3,2
ANNA-50-4-M		4										
ANNA-50-5-M	5											
ANNA-50-6-M	6											
ANNA-50-7-M	7											
ANNA-40-7-M2	M	7	40	10,7	25	87	3,2					
ANNA-40-3-S	S	3	40	10,7	15	91	8,5					
ANNA-40-4-S		4										
ANNA-40-5-S		5										
ANNA-40-6-S		6										
ANNA-40-7-S		7										
ANNA-50-3-S		3						50	10,7	32	86	1,9
ANNA-50-4-S		4										
ANNA-50-5-S	5											
ANNA-50-6-S	6											
ANNA-50-7-S	7											
ANNA-40-3-W	W	3	40	10,7	64	90	0,9					
ANNA-40-4-W		4										
ANNA-40-5-W		5										
ANNA-40-6-W		6										
ANNA-40-7-W		7										
ANNA-50-3-W		3						50	12,5	64	90	0,9
ANNA-50-4-W		4										
ANNA-50-5-W	5											
ANNA-50-6-W	6											
ANNA-50-7-W	7											
ANNA-40-7-WW	WW	6	40	12,5	64	90	0,9					



ANNA-50-3-S

D: 50 mm
 3 LEDs
 PMMA
 Beam type: Spot



ANNA-40-4-S

D: 40 mm
 4 LEDs
 PMMA
 Beam type: Spot



ANNA-40-3-M

D: 40 mm
 3 LEDs
 PMMA
 Beam type: Medium

DOLLY

www.ledil.com/dolly

Name	Beam type	LEDs	D	H	Led	FWHM
APOLLO-3-S	S	3	50	19,4	LUXEON K2	10
LAIKA-3-S	S	3	50	20,4	P4	10
TITANUM-3-S	S	3	50	18,4	Golden Dragon+	15
TITANUM-3-M	M	3	50	19,9	Golden Dragon+	30
APOLLO-3-M	M	3	50	20,9	LUXEON K2	27
LAIKA-3-M	M	3	50	20,4	P4	28



GDr+
LX K2
P4

TAMPA

www.ledil.com/tampa

NIS83-MX-7-M

D: 38 mm

7 LEDs

PMMA

Beam type: Medium

Name	Beam type	Height	Typ. FWHM	Typ. eff.
NIS83-MX-7-M	M	11,4	20	90
NIS83-MX-7-MD	MD	11,4	22	91
NIS83-MX-7-W	W	11,4	37	89
NIS83-MX-7-WW	WW	11,4	57	87
RER-7-MD	MD	10,6	33	85
RER-7-S	S	10,6	19	89
RER-7-W	W	10,6	41	82
RER-7-WW	WW	10,6	53	90



MX-6
LX Rebel
LX Rebel ES
NIS3x83
NIS6x83
OLP-x6050F6

PENTA

www.ledil.com/penta

PENTA-5-M

D: 35,5 mm

5 LEDs

PMMA

Beam type: Medium

Name	Beam type	LEDs	Height	FWHM
NIS83-MX-5-W	W	5	6,8	36
PENTA-5-M	M	5	7,2	30
RER-5-M	M	5	6,8	28



NIS83-MX-5-W

D: 35,5 mm, 5 LEDs, PMMA

Beam type: Wide

QUAK

www.ledil.com/quak

NIS83-MX-4-M

D: 50 mm

4 LEDs

PMMA

Beam type: Medium

Name	Beam	FWHM
NIS83-MX-4-SS	SS	15
NIS83-MX-4-M	M	21
NIS83-MX-4-W	W	49



MX-6
NIS3x83
NIS6x83

Multi-lens arrays

MELODY

www.ledil.com/melody

MELODY-3-M

D: 50,6 mm

H: 11,9 mm

3 LEDs

PMMA

Beam type: Medium

Name	Beam type	LEDs	Typ. FWHM	Typ. eff.	Typ. cd/lm
MELODY-4-M	M	4	29	89	2,8
MELODY-3-M	M	3	34	92	2,1
MELODY-4-S	S	4	12	89	14,8



XP-E
XP-E2
XP-G
XP-G2
XT-E
LX-A
LX-R
LX-T
LX Rebel
LX Rebel ES
NC-Sxx19A
NC-Sxx19B
NV-Sxx19A
NV-Sxx19B
Od SSL80
Od SSL150
Od Sg EC

ANGIE

www.ledil.com/angie

ANGIE-S

D: 34 mm

H: 10,7 mm

4 LEDs

PMMA

Beam type: Spot

Name	Beam type	Typ. FWHM	Typ. eff.	Typ. cd/lm
ANGIE-S	S	12	93	11,8
ANGIE-M	M	19	89	6,2
ANGIE-M2	M2	26	88	3,3
ANGIE-W	W	29	84	2,4



XP-E
XP-G
LX-T
LX Rebel
LX Rebel ES
Od SSL80
Od SSL150
Od Sg EC
Z5

TUIJA

www.ledil.com/tuija

Name	Beam type	LEDs	D	H	Typ. FWHM	Typ. Efficiency	Typ. cd/lm
TUIJA-3-M	M	3	50	14,5	16	84	5,6
TUIJA-3-M2	M	3	50	14,5	35	87	2
TUIJA-3-SS	SS	3	50	14,5	12	90	12,9
TUIJA-3-W	W	3	50	14,5	53	86	0,9



XB-D
XP-E
XP-G
LX-A
LX Rebel
LX Rebel ES
Od SSL150
Od SSL80
NC-S19
NV-S19
Double Dome
Pics Zenitrad
Z5

MARTHA

www.ledil.com/martha

PLATINUMROCKET-3-SS

D: 50 mm

3 LEDs

PMMA

Beam type: Smooth spot

Name	Beam type	LEDs	D	Typ. H	Typ. FWHM
APOLLO-LAIKA-3-W	W	3	50	17	49
NIS83-MX-3-W	W	3	50	15	48
PLATINUMROCKET-3-W	w	3	50	16	43
PLATINUMROCKET-3-SS	SS	3	50	16	14
PLATINUMROCKET-3-M	M	3	50	16	20
NIS83-MX-3-M	M	3	50	16	22



GDr+
LX K2
MX-G
XR-E
NS6x83
P4

The information contained herein is the property of LEDIL Oy, Satorankatu 10, FI-24240 SALO, Finland and is subject to change without prior notice. Please visit www.ledil.com for additional information, such as the latest photometric files, 3D mechanical models, and application notes relating to handling, gluing and taping.

SANDRA

www.ledil.com/sandra

SANDRA is the largest diameter optical array family LEDiL has. It has suited for many applications like for example in retrofits, retail lighting and track mounted lighting fixtures.

SANDRA-S

NEW!
D: 67 mm
H: 11,1 mm
12 LEDs
PMMA
Beam type: Spot



Name	Beam type	Typ. FWHM	Typ. eff.	Typ. cd/lm
SANDRA-12-M	M	28	88	2,4
SANDRA-12-W	W	31	88	2,4
SANDRA-12-S	S	14	91	13,2



SANDRA-M

D: 67 mm
H: 11,1 mm
12 LEDs
PMMA
Beam type: Medium



SANDRA-W

D: 67 mm
H: 11,1 mm
12 LEDs
PMMA
Beam type: Wide

EMY

www.ledil.com/emy

EMY-S

D: 50 mm
H: 14,4 mm
6 LEDs
PMMA
Beam type:
Smooth spot



PETUNIA

www.ledil.com/petuniafamily

PETUNIA

D: 29,5 x 46,5 mm H: 7,4 mm
12 LEDs PMMA
Typ. FWHM: 29°, Typ. eff: 91%



XP-E
XP-G
XP-G2
XTE
Os SSL80
Os Sg EC
LX Rebel
LX Rebel ES
Double Dome
Pico Zengata
NC Sxx19A
NV Sxx19A
Z5

MX-6
NS6x83
NV Sxx19A

Os SSL150
XB-D
XP-E
NV Sxx19A

VIRPI

www.ledil.com/virpifamily



VIRPI-S

D: 74,9 x 74,9 mm
 H: 9,4 mm
 25 LEDs
 PMMA
 Beam type: Spot
 Typical FWHM: 15°
 Typical cd/lm: 7,5



VIRPI-M

D: 74,9 x 74,9 mm
 H: 9,4 mm
 25 LEDs
 PMMA
 Beam type: Medium
 Typical FWHM: 29°
 Typical cd/lm: 2,7



VIRPI-W

D: 74,9 x 74,9 mm
 H: 9,4 mm
 25 LEDs
 PMMA
 Beam type: Wide
 Typical FWHM: 42°
 Typical cd/lm: 1,6

VANESSA

www.ledil.com/vanessafamily

Name	Beam type	Typ. FWHM	Typ. eff.
VANESSA-M	Medium	26	89
VANESSA-O	Oval	42+19°	82
VANESSA-S	Spot	17	90
VANESSA-B-O	Oval	TBA	TBA
VANESSA-B-S	Spot	TBA	TBA
VANESSA-B-W	Wide	TBA	TBA



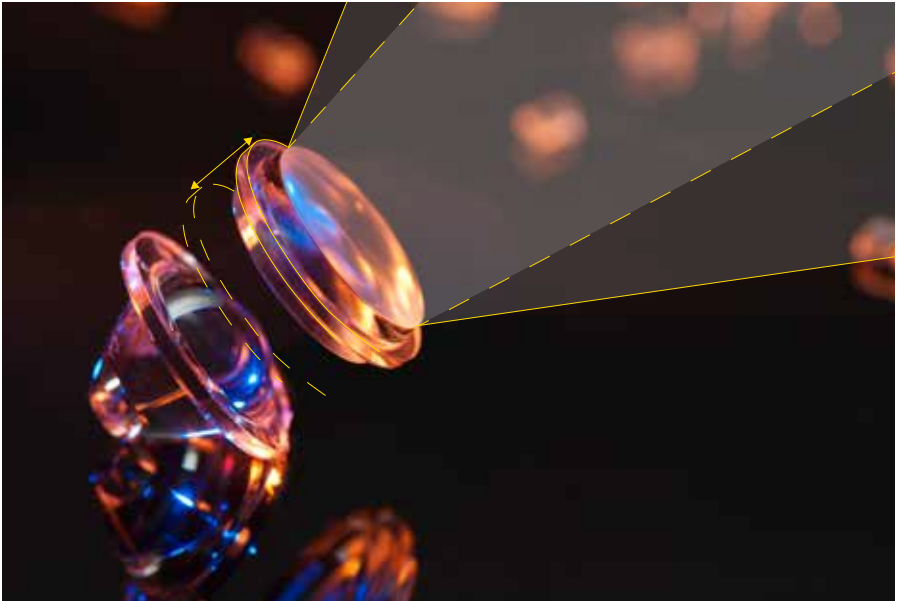
VANESSA-M



VANESSA-O



VANESSA-S

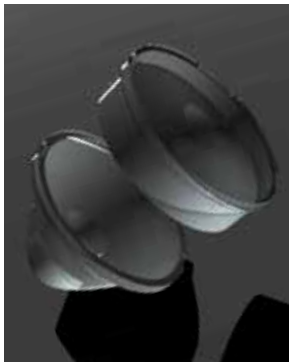


ZOWIE

www.ledil.com/zowie

Spot or Wide – Take Both

Three revolutionary products featuring efficient zoom from spot to wide beams. Ideal choice for applications that benefit from adjustability and a compact optical system.



ZOWIE-MIDI
D: 35 mm
PMMA
Beam type: Zoom

Name	Diameter	Beam type	Typ. FWHM
ZOWIE-6	49,5	Zoom	68,3
ZOWIE-MAXI	65	Zoom	TBA
ZOWIE-MIDI	35	Zoom	TBA
ZOWIE-MINI	14,8	Zoom	24+60



ZOWIE-MINI
D: 14,8 mm
PMMA
Beam type: Zoom
Available with optional multi-holder



ZOWIE-MAXI
D: 65 mm
PMMA
Beam type: Zoom
Pictured with optional holder

FWHM angles, efficiencies and cd/lm values contained herein are average values. Actual measured values depend of the specific LED/optic combination. Go to www.ledil.com for the LED specific values and optic datasheets.

[MK-R](#)
[XB-D](#)
[XM-L](#)
[XM-L2](#)
[XP-E](#)
[XP-E2](#)
[XP-EHEW](#)
[XP-G2](#)
[XP-G](#)
[XLE](#)
[OSBq PC](#)
[OS SSI80](#)
[OS SSI150](#)
[LX-A](#)
[LX-M](#)
[LX-R80d1](#)
[LX-R80d1ES](#)
[LX-R](#)
[LX-T](#)
[LX-H50-2](#)
[LX-ZES](#)
[NC5xx19A](#)
[NC5xx19B](#)
[NV5x383](#)
[NV5xx19A](#)
[NV5xx19B](#)
[Double Dome](#)
[S335H](#)
[LH51A\(3535\)](#)
[OLM-x3535L-2M](#)
[OLP-5065F61-06A](#)
[ZS](#)

High Bay

www.ledil.com/
highbayfamily

Name	LEDs	Diameter	Height	Typ. FWHM
HB-2X2-M	4	50x50	8,5	25
HB-2X2-O	4	50x50	10,6	TBA
HB-2X2-RW	4	50x50	8,5	51
HB-2X2-W	4	50x50	8,5	51
HB-2X2-WW	4	50x50	8,5	65
HB-5X1-FLAT-W	5	123 x 25	8,5	54
HB-5X1-W	5	123 x 25	9	56
HB-5X1-WW	5	123 x 25	9	TBA
HB-IP-2X6-M	12	173 + 71.4	TBA	TBA
HB-IP-2X6-WW	12	TBA	TBA	TBA
HB-SQ-A	1	25 x 25	12,9	50



HB-5X1-W

D: 123 x 25 mm
 H: 9 mm
 Typ. FWHM: 56°
 Typ. eff: 89%
 PMMA
 LEDs: 5



HB-5X1-FLAT-W

D: 123 x 25 mm
 H: 8,5 mm
 PMMA
 Typ. FWHM: 54°
 Typ. eff: 91%
 LEDs: 5



HB-2X2-RW

D: 50x50 mm
 H: 8,5 mm
 PMMA
 Typ. FWHM: 51°
 Typ. eff: 89%
 LEDs: 4



HB-SQ-A

D: 25 x 25 mm
 H: 12,9 mm
 PMMA
 Typ. FWHM: 54°
 Typ. eff: 86%

STRADA

www.ledil.com/strada

STRADA lenses, originally designed for street lighting applications, are suitable for many other applications as well.

Like all LEDiL products STRADA lenses are optimized for specific LED types and have optimal light distribution and over 90% optical efficiency. Some STRADA lenses

can also be used with other LED types with a small sacrifice in light distribution and optical efficiency. STRADA lenses designated for roadway lighting have batwing light distribution for better performance.

Symmetric STRADA lenses were the first lenses from

LEDiL designed especially for street lighting applications. On street lighting setups, symmetrical light distribution requires a mounting boom and tilt in the lamp head. This makes symmetrical STRADA lenses ideal for traditional street light replacement.

Single optics

**STRADA-A**

D: 19,6 x 15,4 mm
H: 10,8 mm
PMMA
Typ. FWHM: 80° x 146°
Typ. eff: 92%

**STRADA-A2**

D: 19,6 x 15,4 mm
H: 10,6 mm
PMMA
Typ. FWHM: 72° x 141°
Typ. eff: 92%

**STRADA-B**

D: 19,6 x 15,5 mm
H: 6 mm
PMMA
Typ. FWHM: 105° x 44°
Typ. eff: 93%

**STRADA-B2**

D: 19,6 x 15,5 mm
H: 5,3 mm
PMMA
Typ. FWHM: 111° x 47°
Typ. eff: 92%

**STRADA-C**

D: 19,6 x 15,6 mm
H: 5,3 mm
PMMA
Typ. FWHM: 125°
Typ. eff: 92%

**STRADA-C2**

D: 19,6 x 15,6 mm
H: 6,4 mm
PMMA
Typ. FWHM: 120°
Typ. eff: 92%

**STRADA-C2-CLIP**

D: 19,6 x 15,6 mm
H: 6,9 mm
PMMA
Typ. eff: 92%

**STRADA-DN**

D: 19,6 x 15,7 mm
H: 5,9 mm
PMMA
Typ. FWHM: 107° x 58°
Typ. eff: 92%

**STRADA-DW**

D: 19,6 x 15,7 mm
H: 9,6 mm
PMMA
Typ. FWHM: 89° x 142°
Typ. eff: 92%

**STRADA-FT**

D: 19,6 x 15,4 mm
H: 8,3 mm
PMMA
Typ. eff: 91%

**STRADA-FW**

D: 19,6 x 15,5 mm
H: 10,9 mm
PMMA
Typ. eff: 92%

**STRADA-K**

D: 19,6 x 15,5 mm
H: 8,7 mm
PMMA
Typ. eff: 96%

**STRADA-S**

D: 19,6 x 15,5 mm
H: 6,9 mm
PMMA
Typ. FWHM: 149° x 159°
Typ. eff: 93%

**STRADA-S-14**

D: 19,6 x 15,5 mm
H: 6,9 mm
PMMA
Typ. FWHM: 149° x 159°
Typ. eff: 93%

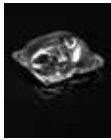
**STRADA-SQ-A-T**

D: 25 x 25 mm
H: 9,1 mm
PMMA
Typ. eff: 93%



STRADA-SQ-T3

D: 25 x 25 mm
H: 8,5 mm
PMMA
Typ. eff: 90%



STRADA-SQ-T2

D: 25 x 25 mm
H: 8,5 mm
PMMA
Typ. eff: 90%



STRADA-SQ-FS

D: 25 x 25 mm
H: 8,5 mm
PMMA
Typ. eff: 90%



STRADA-SQ-CY

D: 25x25 mm
H: 10.1 mm
PMMA
Typ. eff: 94%



STRADA-SQ-T-DN

D: 25 x 25 mm
H: 8,5 mm
PMMA
Typ. eff: 90%



STRADA-SQ-T-DW

D: 25 x 25 mm
H: 11,4 mm
PMMA
Typ. eff: 91%



STRADA-SQ-T-DW-90

D: 25 x 25 mm
H: 11,4 mm
PMMA
Typ. eff: 91%



STRADA-SQ-T-DWC

D: 25 x 25 mm
H: 9,1 mm
PMMA
Typ. eff: 93%



STRADA-SQ-VSM

D: 25 x 25 mm
H: 6,9 mm, PMMA
Typ. FWHM: 152°
Typ. eff: 93%



STRADA-T-DN

D: 19,8 x 15,5 mm
H: 8,9 mm
PMMA
Typ. eff: 92%



STRADA-T-DN-EP

D: 19,8 x 15,5 mm
H: 8,8 mm
PMMA
Typ. eff: 91%



STRADA-T-DW

D: 19,8 x 15,5 mm
H: 10,8 mm
PMMA
Typ. eff: 93%



STRADA-T-DW-EP

D: 19,8 x 15,5 mm
H: 10,7 mm
PMMA
Typ. eff: 92%

Name	Diameter	Height	Typ. eff.	Typ. FWHM
STRADA-SQ-FS-NP	25x25	12,4	TBA	TBA
STRADA-SQ-ME	25x25	8,6	TBA	TBA
STRADA-SQ-FT	25x25	12,5	TBA	TBA
STRADA-SQ-ME-NP	25x25	8,6	TBA	TBA
STRADA-SQ-T4	25x25	9,4	TBA	TBA
STRADA-SQ-FW	25x25	15,3	TBA	TBA
STRADA-SQ-T4-NP	25x25	9,4	TBA	TBA
STRADA-C2-NP	19,6 x 15,5	6,9	92,0	111

2x2 modules

NEW!



STRADA-2X2-A-T
D: 50 x 50 mm
H: 7,3 mm
PMMA
Typ. eff: 93%



STRADA-2X2-CY
D:
H:
PMMA
Typ. eff:



STRADA-2X2-DN
D:
H:
PMMA
Typ. eff:



STRADA-2X2-DNW
D: 50 x 50 mm
H: 11 mm
PMMA
Typ. eff: 93%



STRADA-2X2-DWC
D: 50 x 50 mm
H: 6 mm
PMMA
Typ. eff: 93%



STRADA-2X2-FN
D:
H:
PMMA
Typ. eff:



STRADA-2X2-ME
D: 50 x 50 mm
H: 8,2 mm
PMMA



STRADA-2X2-T3
D: 50 x 50 mm
H: 7 mm
PMMA



STRADA-2X2-T4
D: 50 x 50 mm
H: 7 mm
PMMA



STRADA-2X2-XW
D: 50 x 50 mm
H: 7 mm
PMMA

STRADA
6X1 modules

Precision-engineered lens array.

Emitted light has an asymmetric tilt in the wide beam to efficiently direct light to the roadway surface and to minimize stray light outside of target areas.



STRADA-6X1-DNW
D: 119,8 x 25,2 mm, H: 5,6 mm
Typ. efficiency: 93%



STRADA-6X1-DWC
D: 119,8 x 25,2 mm, H: 5,5 mm
Typ. efficiency: 94%

STRADA-IP 2X6 modules



STRADA-IP-2X6-DWC
D: 173 x 71,4 mm, H: 7,9 mm
Typ. efficiency: 96%

COMING IN Q4

STRADA-IP-2X6-ME
D: 173 x 71,4 mm, H: 7,9 mm
Typ. efficiency: 96%

STRADA-IP-2X6-T2
D: 173 x 71,4 mm, H: 7,9 mm
Typ. efficiency: 96%

STRADA-IP-2X6-T3
D: 173 x 71,4 mm, H: 7,9 mm
Typ. efficiency: 96%

This street lighting optic is designed for peak optical performance, ease of installation and protection from dirt and water. STRADA-IP-2X6-DWC is a precision-engineered 12-position lens array with a tilted beam to direct light efficiently to the roadway surface.

The integral silicone gasket protects up to IP67. The wide, asymmetric beam allows for rapid development of luminaires classified as IESNA Type II and III and related European and Russian street lighting classes.

