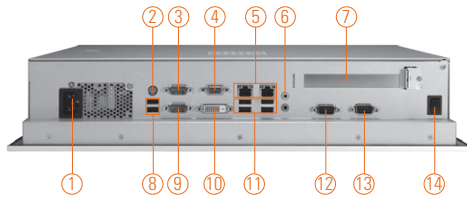
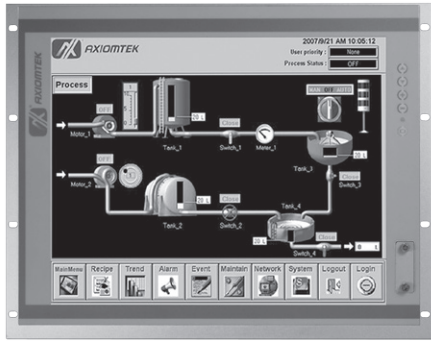


P1197E-861

19" SXGA TFT Expandable Industrial Touch Panel Computer with Intel® Core™ i7/i5/i3, Celeron® & Pentium® Processor, 1 PCI or 1 PCIe Slot



- | | | |
|-------------------------------|----------------------------|--------------------|
| 1. AC Plug | 6. Audio (Mic-in/Line-out) | 11. USB 2.0 x 4 |
| 2. PS2 Keyboard & Mouse combo | 7. 1 x PCIe x 4 or 1 x PCI | 12. COM 3 (RS-232) |
| 3. COM 1 (RS-232/422/485) | 8. USB 2.0 x 2 | 13. COM 4 (RS-232) |
| 4. VGA x 1 | 9. COM 2 (RS-232) | 14. Power Switch |
| 5. Ethernet x 2 | 10. DVI-D x 1 | |



Introduction

The P1197E-861 is a multimedia 19" touch panel PC for kiosk application. It has a fashionable mechanism design and industrial-grade material front bezel which can avoid damage from chemical corrosion. To meet the demands of multimedia application, the P1197E-861 is powered by a high performance LGA1155 socket 3rd & 2nd generation Intel® Core™ processor with the Intel® H61 Express chipset. It features four COM ports, two Gigabit Ethernet and up to 16 GB memory of dual-channel DDR3 that delivers high computing capability for high performance-demanding applications. The industrial touch panel PC is most suitable for kiosk, factory and automation.

Expandable for 1 PCIe or 1 PCI

The P1197E-861 has 1 PCIe x4 or 1 PCI slot for expansion purpose. User can easily plug in standard half-size PCI or PCIe card based on any application needs.

Speaker and WLAN Antenna Supported

The P1197E-861 features built-in speakers for kiosk application to display multimedia content program. It also supports WLAN module antenna (optional) for wireless network connectivity.

SATA HDD Trays for Easy Maintenance

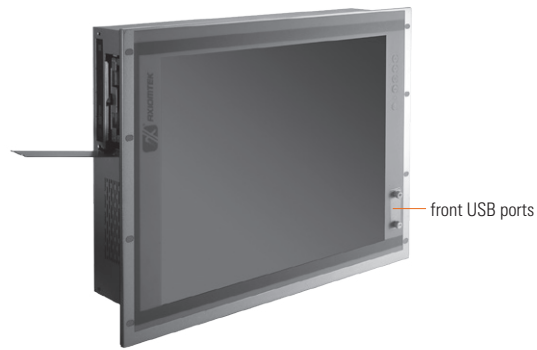
Without the complicated steps, users can maintain hard drive in 2 steps that make the work more efficiency.

Friendly Less Screw Design

The P1197E-861 is designed with ease of maintenance in mind. There are only three screws on the back chassis, so that technicians can quickly remove the system's back cover with minimum effort.

Features

- 19" SXGA TFT LCD display
- LGA1155 socket 3rd & 2nd generation Intel® Core™ i7/i5/i3, Celeron® & Pentium® processor
- Intel® H61
- Less screw design for easy installation
- 6 USB 2.0, 2 USB 2.0 and 4 COM ports
- One PCIe x4 or one PCIe expansion slots
- Built-in speakers and optional Wi-Fi 802.11 b/g/n module
- Robust aluminum with IP65 compliant front bezel design



▲ HDD easy maintenance

Specifications

Front Bezel	Aluminum w/ IP65/NEMA 4 rugged protection	
LCD Panel	Display Type	19" SXGA TFT LCD
	Brightness	350 nits
	Resolution	1280 x 1024 pixels
	Viewing Angle	170°/160°
Main System	CPU	LGA1155 socket 3rd & 2nd generation Intel® Core™ i7/i5/i3, Celeron® & Pentium® processor
	Chipset	Intel® H61
	System Memory	2 x 204-pin DDR3 SO-DIMM dual channel max. up to 16 GB
	BIOS	AMI UEFI BIOS with OA 3.0 built
	Storage	2 x 2.5" SATA HDD
	Drive	1 x builtin slim DVD-RW (optional)
	Watchdog Timer	255 levels, 1-255 sec.



Specifications

IO Connector	3 x RS-232 (COM 2-4) 1 x RS-232/422/485 (COM 1) 1 x DVI-D 1 x VGA 6 x USB 2.0 (back) 2 x USB 2.0 (front) 2 x 10/100/1000 Mbps Ethernet 1 x Audio (Mic-in/Line-out) 1 x PS/2 Keyboard & mouse combo
Expansion Interface	1 x PCIe x4 or 1 x PCI
Touchscreen	5-wire resistive type Light transmission 79% 1 million activations (typical) at a single point
Power Supply	100 ~ 240VAC, 270W
Power Consumption	162W
Dimensions	469 mm (18.46") (W) x 94.7 mm (3.73") (D) x 380.8 mm (14.99") (H)
Packing Dimension	615 mm (24.21") (W) x 250 mm (9.84") (D) x 585 mm (23.03") (H)
Weight(net/gross)	8 kg (17.64 lb)/ 10.4 kg (22.93 lb)
Environment	Operating temperature: 0°C ~ +45°C (+32°F ~ +113°F) Storage temperature: -20°C ~ +65°C (-4°F ~ +149°F) Relative humidity: 10% ~ 90% @ 40°C, non-considering Operating vibration: 1.0G, 5-500Hz, random
Certificate	CE

Ordering Information

P1197E-861 w/ PCIe	19" SXGA expandable industrial touch panel computer supports LGA1155 socket 3rd & 2nd generation Intel® Core™ i7/i5/i3, Pentium® & Celeron® processor, resistive touch screen and 1 PCIe x4 slot, 100~240VAC
P1197E-861 w/ PCI	19" SXGA expandable industrial touch panel computer supports LGA1155 socket 3rd & 2nd generation Intel® Core™ i7/i5/i3, Pentium® & Celeron® processor, resistive touch screen and 1 PCI slot, 100~240VAC

* Specification and certifications are based on requirements and may vary.

Optional Accessories

82211970060E	DVD-RW kit
82211970070E	VESA & wall mount kit
82231570160E	Wireless LAN kit
E202003330	VM-101 (VESA ARM clamp type)
E202003329	VM-105 (VESA ARM wall-mount)

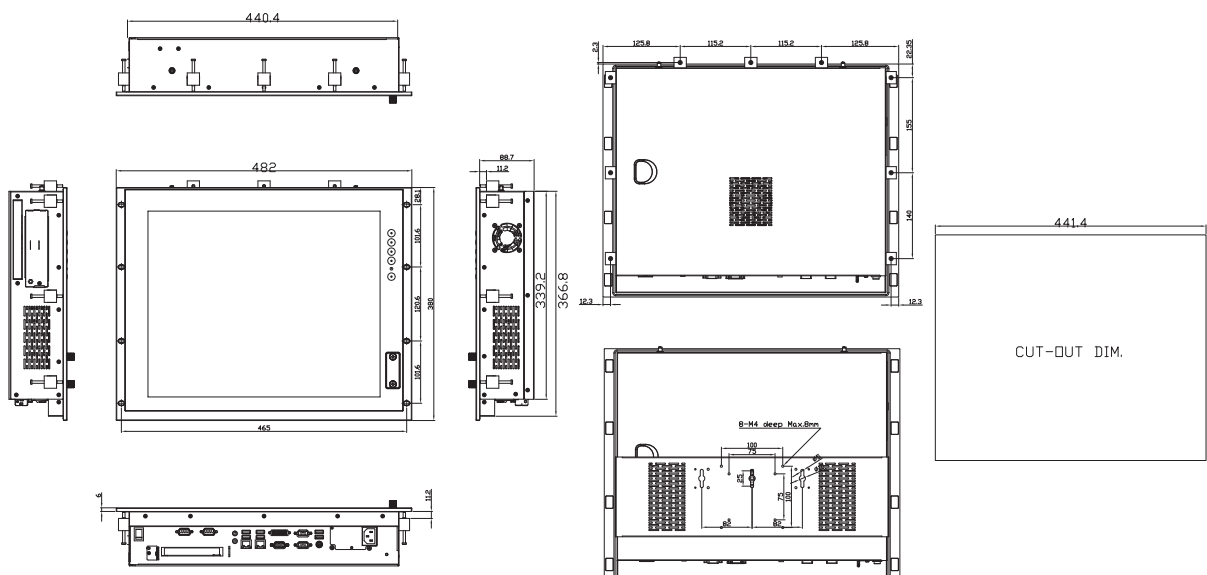
Optional OS Installation

Windows® XP/XPe
Windows® 7/8.1
Windows® Embedded 7/8



▲ Less screw design

Dimensions



Overview

Fanless Touch Panel Computers

Heavy-duty Fanless Touch Panel Computers

3

Industrial Touch Panel Computers

Industrial Touch panel Monitors

Infotainment Touch Panel Computers

Healthcare & Medical Solutions

Open Frame Panel Computers

Accessories

