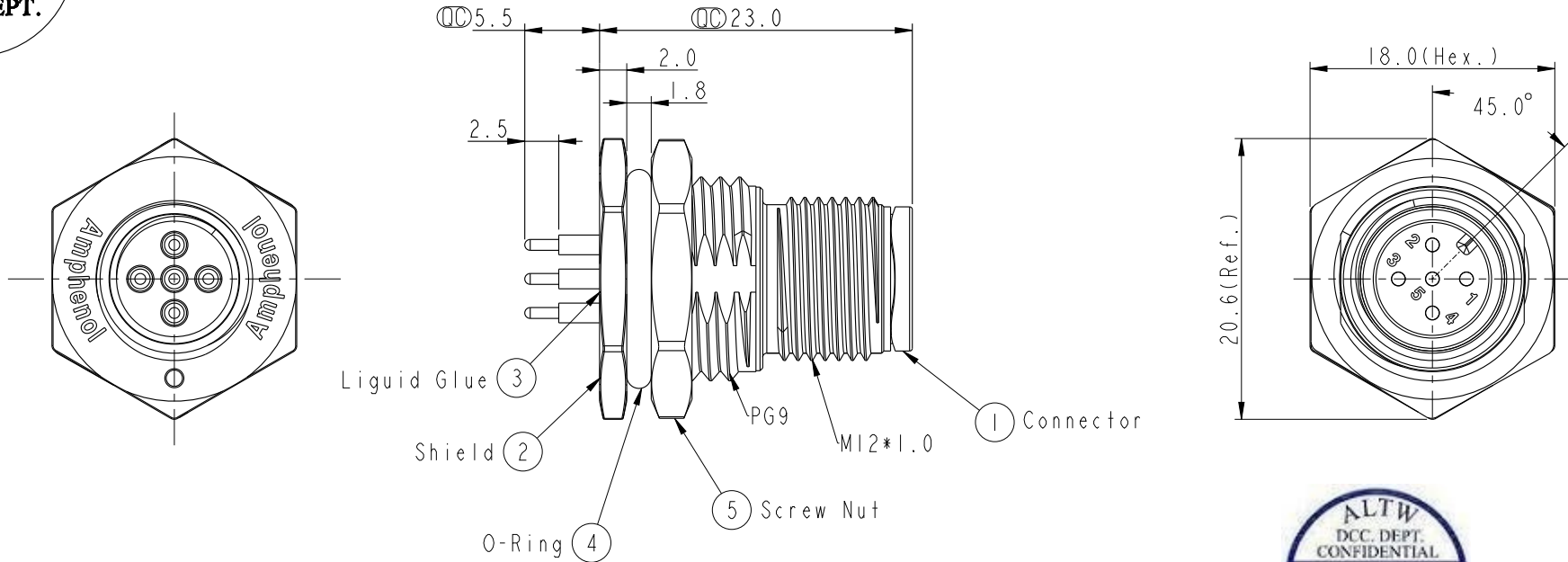
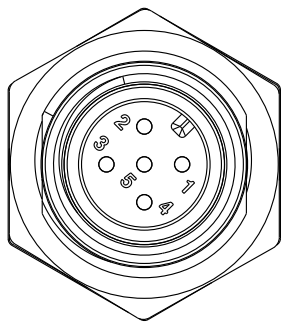


**ALTW**  
**CONFIDENTIAL**  
 2017-07-06  
 R&D DEPT.

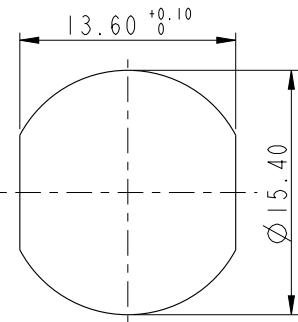
REV.	ECN NO.	DATE	SIGN	DESCRIPTION
A	Initial Release	2017-03-23	Frank Deng	Change Rev.01 To Rev.A
B	LEN1770179	2017-07-03	Frank Deng	Change Note



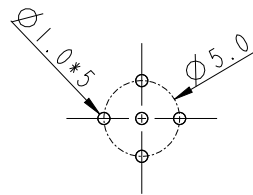
**ALTW**  
 DCC. DEPT.  
 CONFIDENTIAL  
 2017.07.25  
 ISSUED



Pin Assignments  
 Front View



Recommended  
 Panel Cut-Out



PCB Layout

- Note:**
- \*  $\varnothing$  Important Dimension.
  - \* Waterproof Rate: IP68.
  - \* IP68: 1M Depth Of Water In 24hours.
  - \* Housing: Nylon66, UL94V-0, f1, Black.
  - \* Male Pin: Copper Alloy, Gold Plated.
  - \* Shield: Zinc Alloy, Nickel Plated.
  - \* O-Ring: Silicone, Gray.
  - \* Panel Nut: Zinc Alloy, Nickel Plated.
  - \* For Panel Thickness Max 4.5mm.
  - \* Nut Torque: 4-6 Kgf.cm.

UNIT: mm		TITLE		ITEM NO.	DRAWN BY	DATE
		NMEA2000, MICRO-C, PANEL, PCB TYPE 5PIN, M CONN M PIN, METAL				
TOLERANCE		SCALE	SIZE	DWG NO.	CHECKED BY	DATE
.X ±0.25		2:1	A4	HMC-05PMMP-SF8001	Fisher Wang	2017-07-06
.XX ±0.1		REV.	WC-REV.	CUSTOMER	APPROVED BY	DATE
.XXX ±0.05		B	A.3	ALTW	Kevin Hu	2017-07-06
ANGLES ±1°		: Inspection item				

**Amphenol LTW**  
 安費諾亮泰企業股份有限公司

THIS DOCUMENT IS SUBJECT TO CHANGE WITHOUT NOTICE. IT IS CONFIDENTIAL AND A PROPERTY OF Amphenol LTW. DISCLOSURE TO THIRD PARTY HAS TO BE AUTHORIZED BY Amphenol LTW.