

STRADA-2X2-TF

Narrow forward throw beam optimized for European tunnels

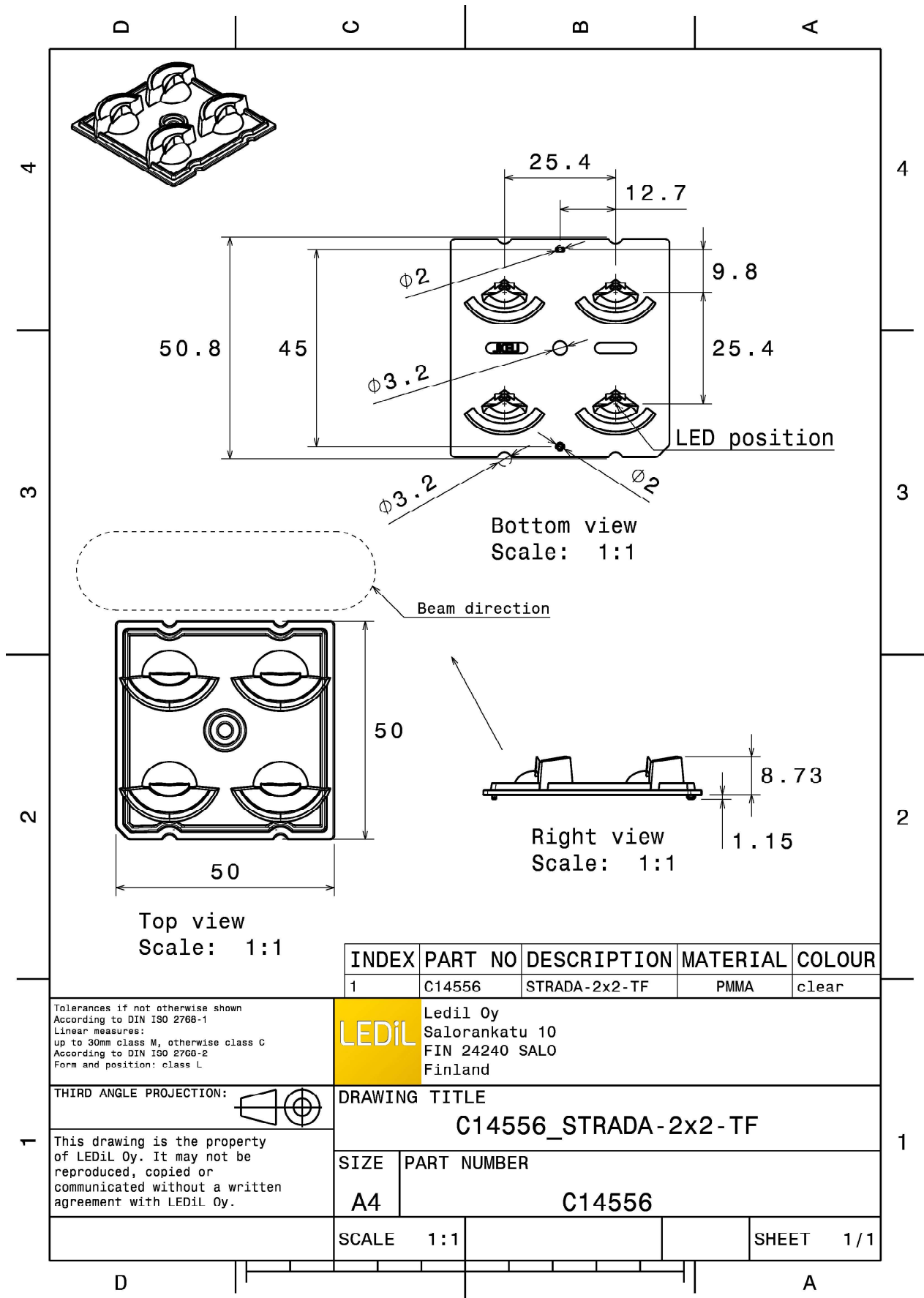
TECHNICAL SPECIFICATIONS:

Dimensions	50.0 mm
Height	8.7 mm
Fastening	screw
Colour	clear
Box size	480 x 280 x 300 mm
Box weight	6.5 kg
Quantity in Box	800 pcs
ROHS compliant	yes ⓘ


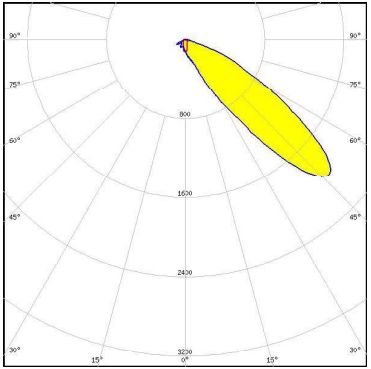

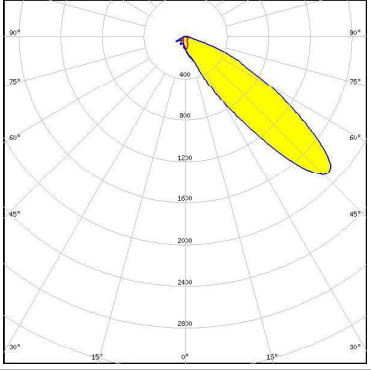

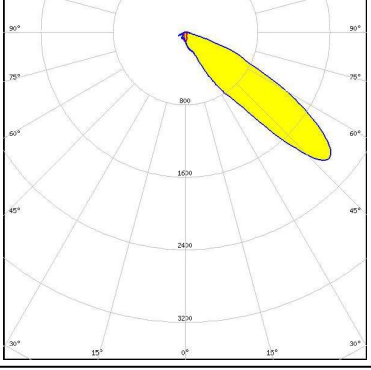



MATERIAL SPECIFICATIONS:

Component	Type	Material	Colour
STRADA-2X2-TF	Multi-lens	PMMA	clear



PHOTOMETRIC DATA (MEASURED):

 <p> LED QUICK FLUX XTP 2x4 xxx LS G5 FWHM Asymmetric Efficiency 94 % Peak intensity 2.000 cd/lm LEDs/each optic 1 Light colour White Required components: </p>	
 <p> LED QUICK FLUX XTP 2x6 xxx LS G5 FWHM Asymmetric Efficiency 94 % Peak intensity 1.900 cd/lm LEDs/each optic 1 Light colour White Required components: </p>	
 <p> LED XP-G2 FWHM Asymmetric Efficiency 94 % Peak intensity 2.100 cd/lm LEDs/each optic 1 Light colour White Required components: </p>	
 <p> LED XP-G3 FWHM Asymmetric Efficiency 94 % Peak intensity 1.700 cd/lm LEDs/each optic 1 Light colour White Required components: </p>	