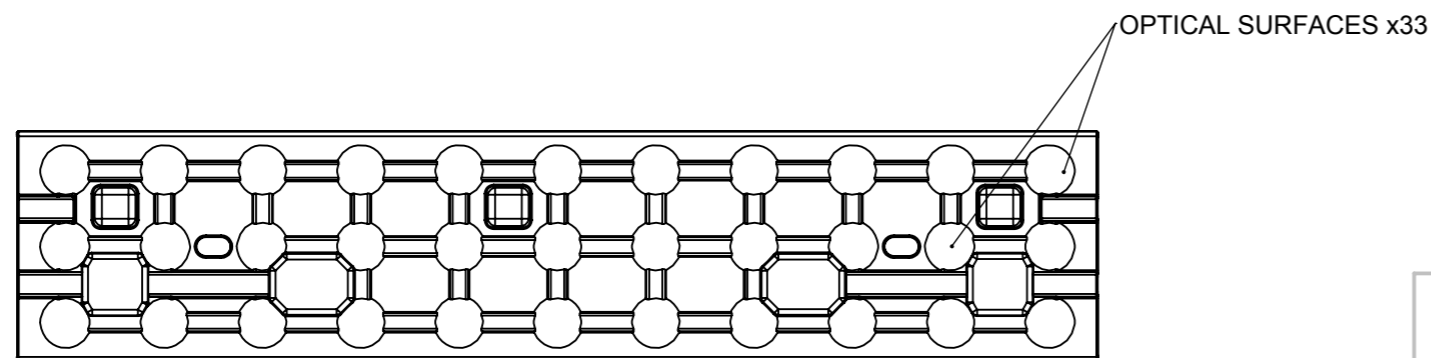
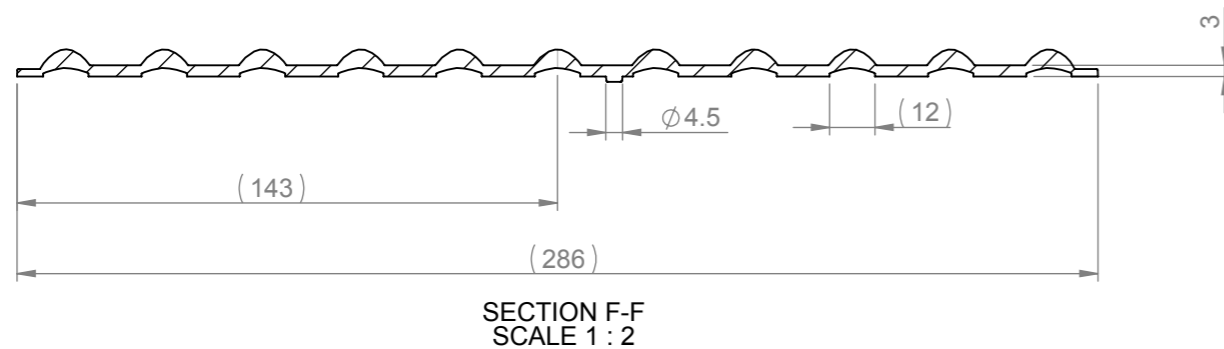
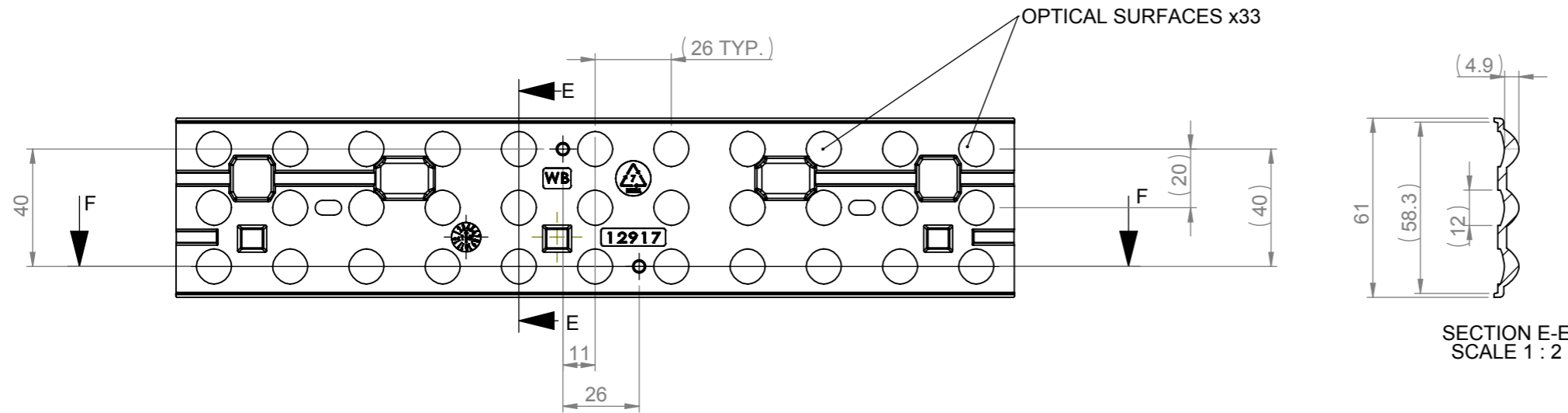


# CUSTOMER DRAWING

REVISIONS			
REV.	D.C.N NUMBER	DESCRIPTION	DATE
D1		FIRST ISSUE	13/03/15
D1a	1402	INSERT WITNESS LINE	18/03/2015
D2	1431	CONNECTOR BOX TEXTURE MODS. P.SUTTON	16/07/2015
1	1434	FUSEBOX ADDITION & PROD RELEASE. PJS	10/09/2015
2	ECN1526	CENTRAL FUSEBOX ADDED. P.SUTTON	11/01/2017



NOTES:

- 1 - MATERIAL: PMMA
- 2 - FINISH:  
OPTICAL SURFACES ARE OPTICALLY POLISHED.
- 3 - DIMENSIONS IN BRACKETS ARE AUXILLIARY DIMENSIONS AND NOT FOR INSPECTION PURPOSES.

SHEET 2 OF 2

<p>Unit 6-7 Faraday Road Rabans Lane Industrial Area, Aylesbury, HP19 8RY, UK. Tel: +44(0) 01753 575 011 sales@carclo-optics.com www.carclo-optics.com</p>		Title		Mid-Power Array Wide Beam - Symmetrical Flange							
THIRD ANGLE PROJECTION		TOLERANCE ACCORDING TO NORM: DIN 16742 Tol Group TG6		CARCLO Optics CONFIDENTIAL: UNAUTHORISED COPYING, DISCUSSION & DISTRIBUTION PROHIBITED		DIMENSION IN mm		Format Size		A3	
Drawn by		B.Bercot		Customer		CARCLO OPTICS		Scale		1:2	
CAD File		12917_Rev-2_WB_SBoard		Part N°		12917		RFQ N°		000297	