

A

B

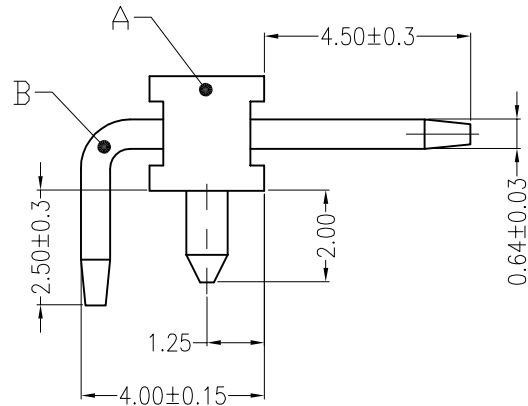
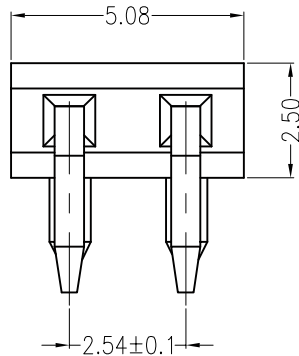
C

D

E

F

REV	ECN No.	DESCRIPTION	DESIGN	DATE
A	-	NEW RELEASE	吴丹平	2017.03.06



主要技术参数 Main Specifications

线 数 (Poles): 02 to 06

接触电阻 (Contact resistance): $\leq 20m\Omega$

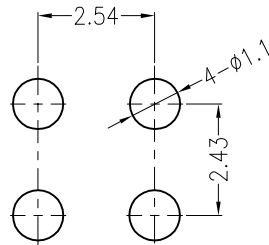
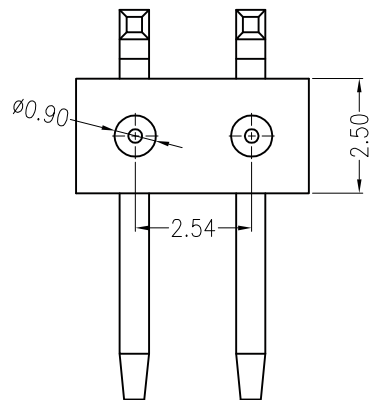
绝缘电阻 (Insulation resistance): $\geq 1000M\Omega$

额定电压 (Rated voltage): 125V AC DC

额定电流 (Rated current): 1.0A AC DC

耐 电 压 (Withstand Voltage): 1500V AC/minute

温度范围 (Temperature Range): $-40^{\circ}C \sim +110^{\circ}C$



Board Layout

C					
B	CONTACT	2 PCS	Brass	Tin-plated	
A	HOUSING	1 PCS	LCP	UL 94V-0, COLOR:BEIGE	
ITEM	COMPONENT	Q'TY	MATERIAL	FINISH	
LEDsconn				TITLE: 2.54mmPITCH 90°WAFER DIP TYPE	
.X±0.35	X.±	USE:	PART NO.:		
.XX±0.25	.X±	CUSTOMER			
.XXX±0.15	.XX±	APPD: 邵敬和	DWG NO.:		
--	--	CHKD: 田峰			
		UNITS: mm	DR: 吴丹平	SCALE 1 : 1	SHEET 1 / 1

A

B

C

D

E

F

1

2

3

4

5

1

2

3

4

5