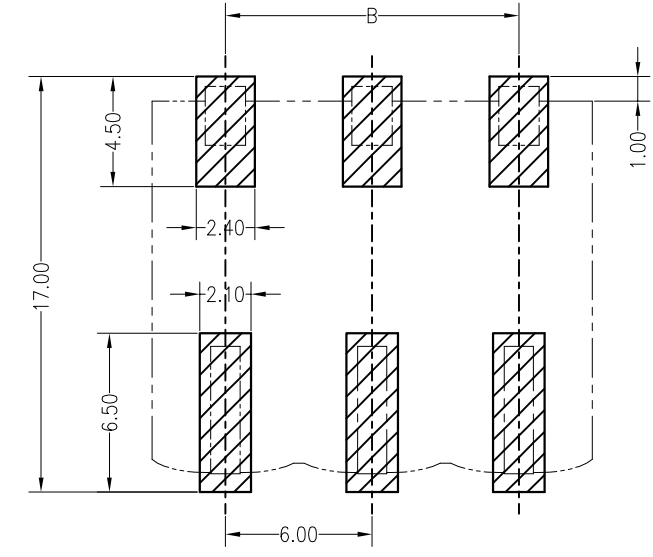
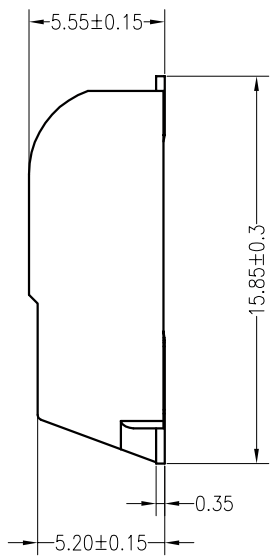
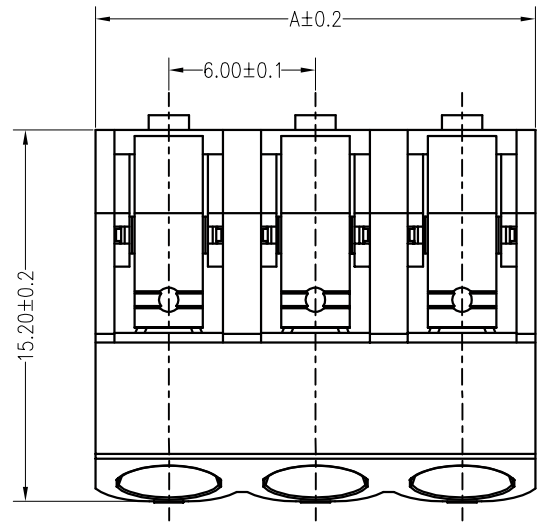
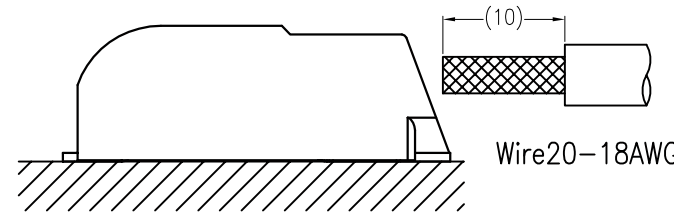
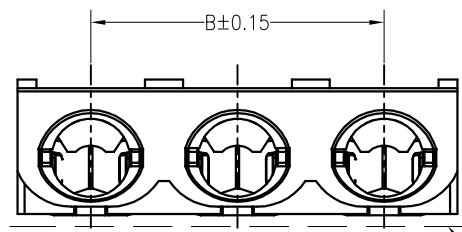


REV	ECN No.	DESCRIPTION	DESIGN	DATE
A0		Release		2017.10.12



Board Layout



Installation drawing



主要技术参数 Main Specifications

线数 (Poles): 01 to 03  
 接触电阻 (Contact resistance):  $\leq 20m\Omega$   
 绝缘电阻 (Insulation resistance):  $\geq 1000M\Omega$   
 额定电压 (Rated voltage): 275V AC DC  
 额定电流 (Rated current): 6.0A AC DC  
 耐电压 (Withstand Voltage): 2500V AC/minute  
 温度范围 (Temperature Range):  $-40^{\circ}C \sim +130^{\circ}C$

名称	尺寸	DIM A	DIM B
01		6.00	
02		12.00	6.00
03		18.00	12.00

ITEM	COMPONENT	Q'TY	MATERIAL	FINISH
B	CONTACT	1~3 PCS	PhosphorBronze	Tin-plated
A	HOUSING	1~3 PCS	LCP	UL 94V-0, COLOR:WHITE

<b>LEDsconn</b>			TITLE: --		
			6.0mmPITCH 90°WAFER SMT TYPE		
X.±0.5	X.±5'	USE: CUSTOMER	PART NO.:		
.X±0.3	.X±2'				APPD:
.XX±0.25	.XX±1'				
--	--	DR:	DWG NO.:		
UNITS: mm		SCALE 1 : 1		SHEET 1 / 1	