

● **Electrical Specifications**

Frequency Range: 900-1800MHz

VSWR: ≤2.0

Gain: 2dBi

Polarization Type: Vertical

Rated Power: 50W

Input Impedance: 50Ohm

● **Mechanical Specifications**

Radome Materials: Plastic

Connector: SMA Male

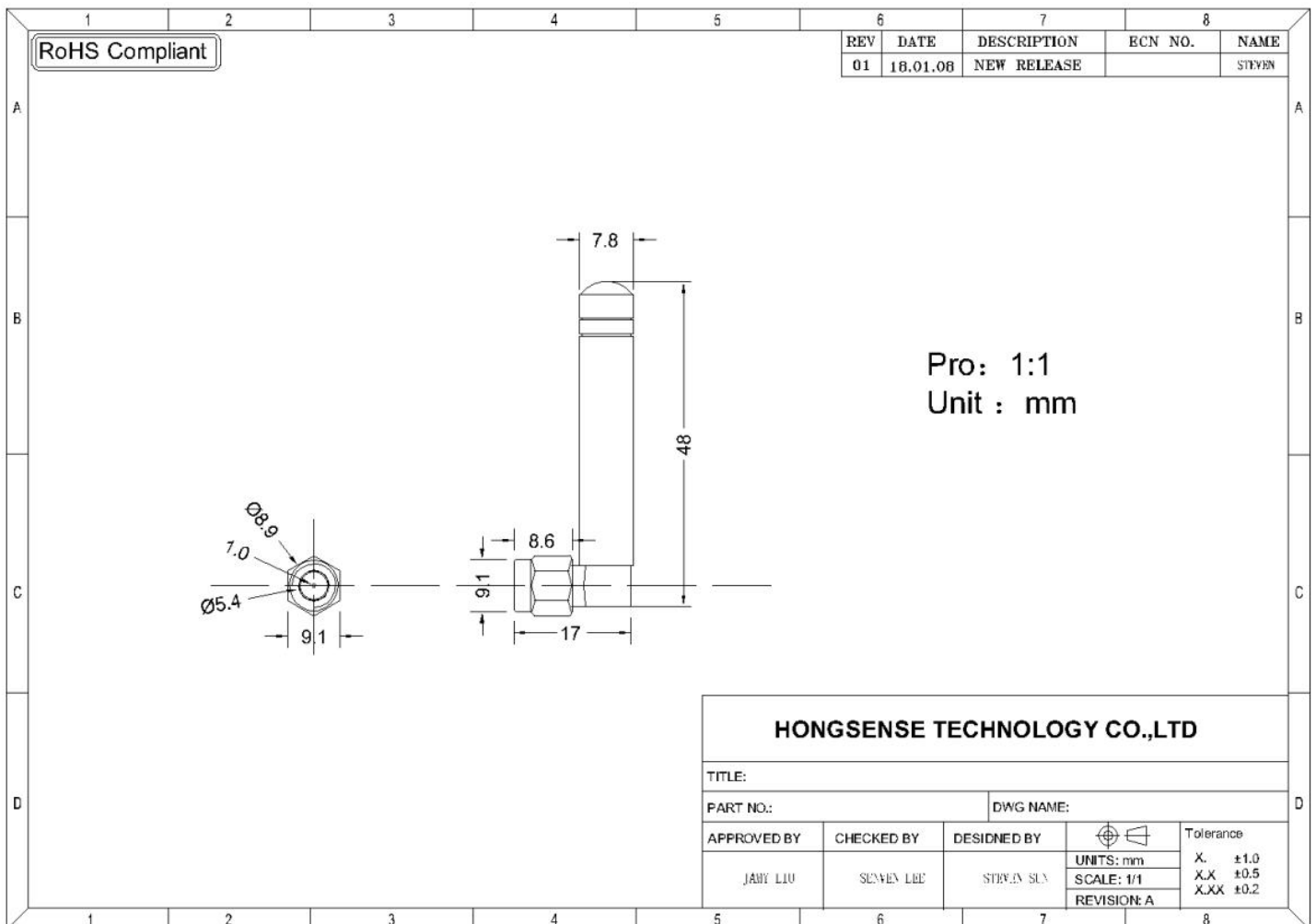
Antenna Length: Ø7.8\*48mm

Radiator: Cuprum

Working Temp: -40℃~+60℃

Humidity: 5%-95%RH

Weight: 6g



• V.S.W.R

