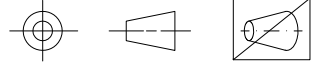


MSL DRAWING NO.
1273-03770-DS-2
SECURITY CLASSIFICATION

SHEET NO. OF

3rd ANGLE PROJECTION



USED ON

MKTG. APPROVED

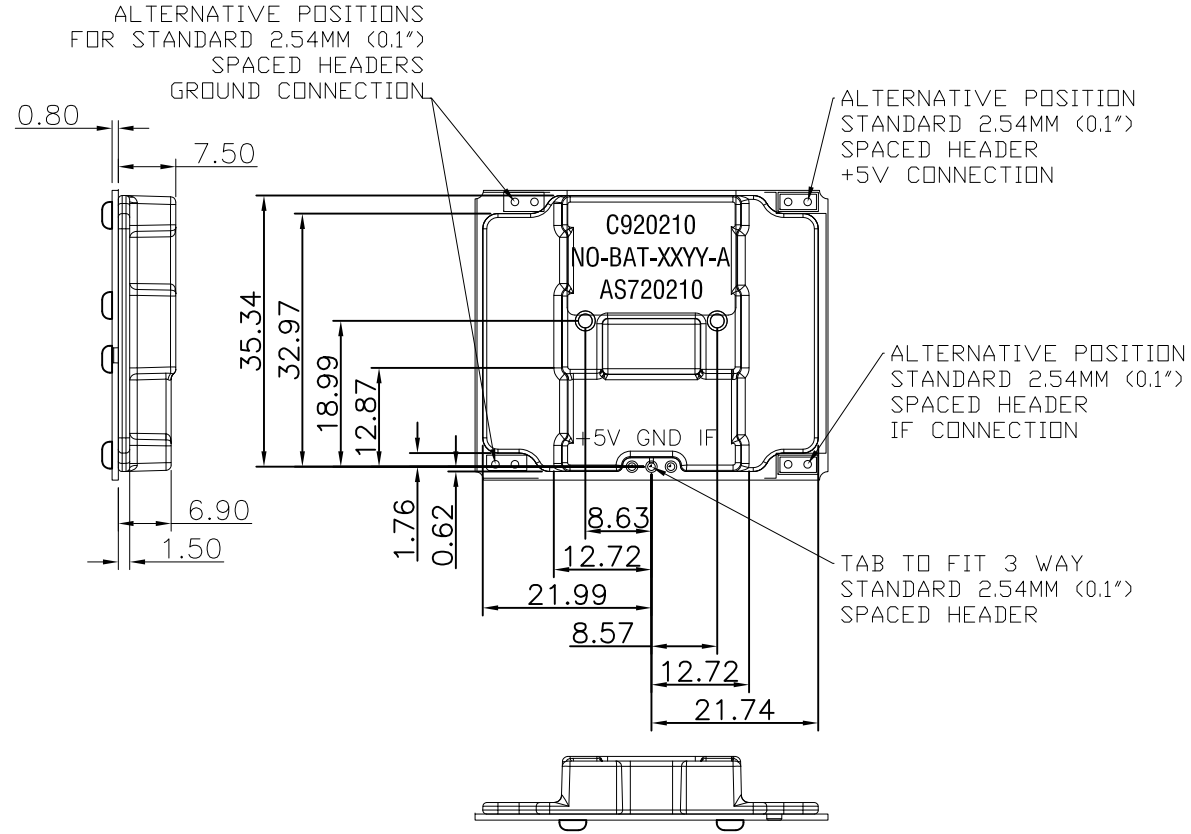
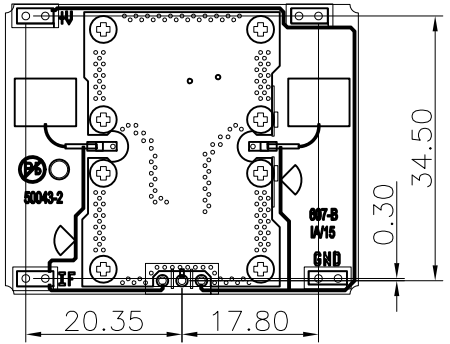
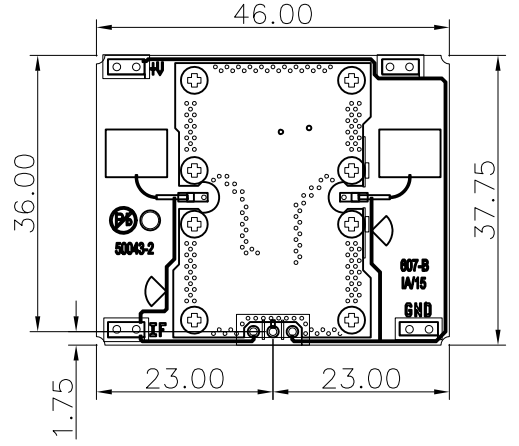
Q.A. APPROVED

PROD. ENG. APPROVED

ELECT. ENG. APPROVED

MECH. ENG. APPROVED

PROJECT APPROVED



NOTES :

- UNIT CONTAINS ELECTROSTATIC SENSITIVE DEVICES. HANDLE IN ACCORDANCE WITH BS 5958
- ELECTRICAL CONNECTION CAN BE MADE VIA EITHER A 3 WAY HEADER TO THE TAB, +5V, GROUND AND IF (PREFERRED). OR VIA AT LEAST THREE 2 WAY HEADERS. (FOUR HEADERS POSITIONS ARE AVAILABLE, +5V, IF AND TWO GROUND).

DRAWN

IAN ALDRED
08/09/15

ISSUE	DATE	AN. NO.	CHK'D	ISSUE	DATE	AN. NO.	CHK'D
1	08/09/15	1426					

MATERIAL

ESTIMATED MASS (kg)

SCALE (ORIGINAL) 2 : 1

DIMENSIONS IN MILLIMETRES

PROTECTIVE FINISH

TOLERANCES

±0.2

UNLESS OTHERWISE STATED

TITLE

INTERFACE DRAWING
MDU 2750L SERIES
CEILING MOUNT

MICROWAVE SOLUTIONS LIMITED, HAMILTON HOUSE,
111 MARLOWES, HEMEL HEMPSTEAD, HERTS, HP1 1BB.

© M.S.L. 2015

DRAWN IN ACCORDANCE WITH BS 308

SECURITY CLASSIFICATION

MEL DRAWING NO.
1273-03770-DS-2

PART NO.
C920209 C923209 C920265 C920275
C920210 C923210 C920266 C920276
C920267 C920277

NO PART OF THIS DRAWING MAY BE REPRODUCED OR TRANSMITTED IN ANY FORM OR BY ANY MEANS INCLUDING PHOTOCOPYING AND RECORDING WITHOUT THE PRIOR WRITTEN PERMISSION OF MICROWAVE SOLUTIONS LIMITED.