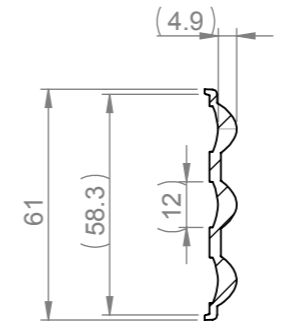
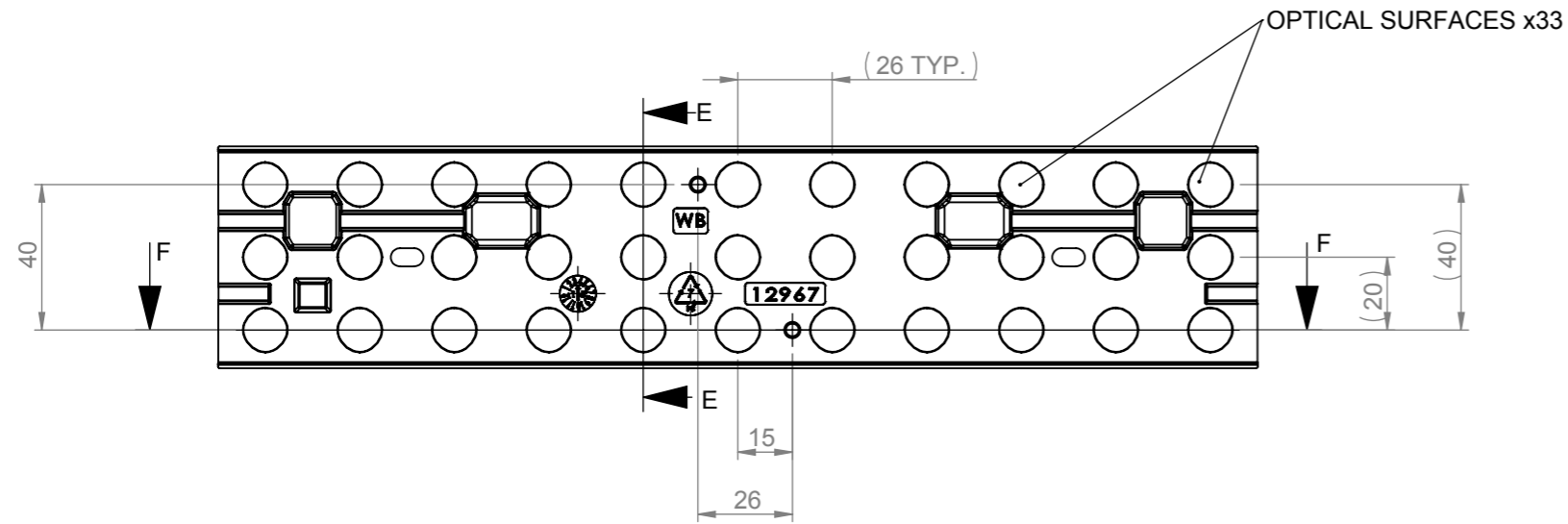
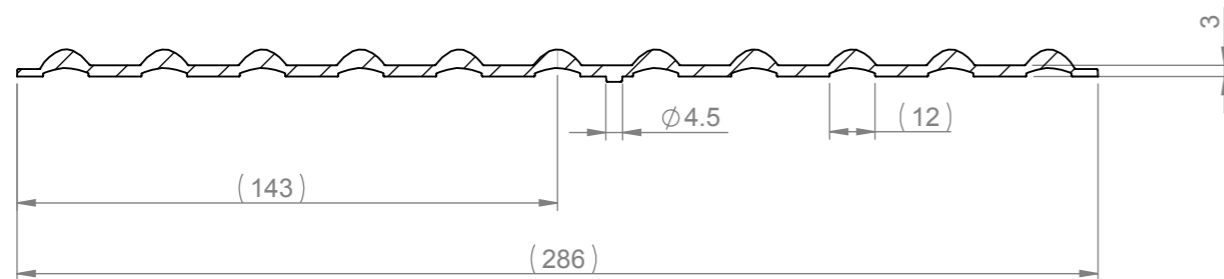


# CUSTOMER DRAWING

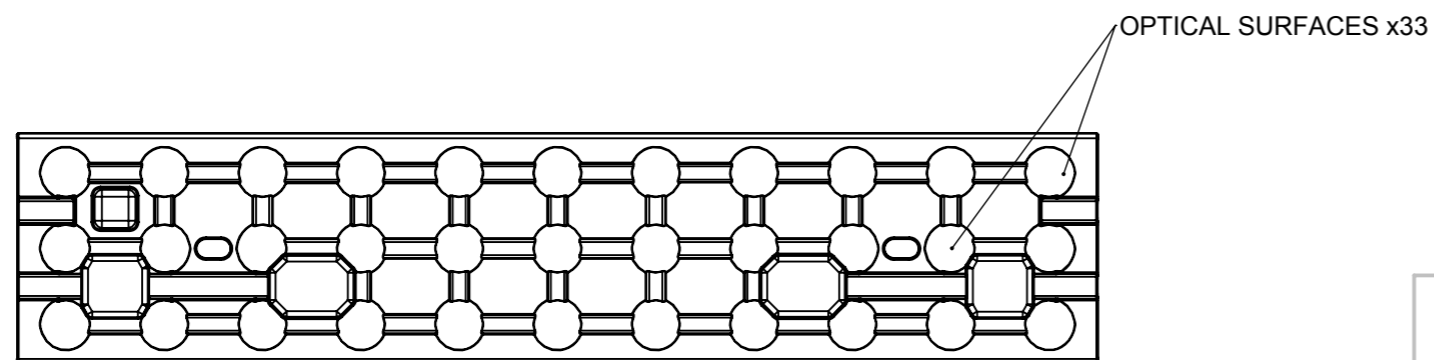
REVISIONS			
REV.	D.C.N NUMBER	DESCRIPTION	DATE
D1		INITIAL DESIGN CONCEPT. P.SUTTON	04/08/2015
1	1451	PRODUCTION RELEASE. P.SUTTON	08/10/2015



SECTION E-E  
SCALE 1 : 2



SECTION F-F  
SCALE 1 : 2



NOTES:

- 1 - MATERIAL: POLYCARBONATE
- 2 - FINISH:  
OPTICAL SURFACES ARE OPTICALLY POLISHED.
- 3 - DIMENSIONS IN BRACKETS ARE AUXILLIARY DIMENSIONS AND NOT FOR INSPECTION PURPOSES.

SHEET 2 OF 2

<p>Unit 6-7 Faraday Road Rabans Lane Industrial Area, Aylesbury, HP19 8RY, UK. Tel: +44(0) 01753 575 011 sales@carclo-optics.com www.carclo-optics.com</p>		Title		Mid-Power Array Wide Beam - Symmetrical Flange							
THIRD ANGLE PROJECTION		TOLERANCE ACCORDING TO NORM: DIN 16742 Tol Group TG6		CARCLO Optics CONFIDENTIAL: UNAUTHORISED COPYING, DISCUSSION & DISTRIBUTION PROHIBITED		DIMENSION IN mm		Format Size		A3	
Drawn by		B.Bercof		Customer		CARCLO OPTICS		Scale		1:2	
CAD File		12967_Rev-1_WB_Fort_SymmFlange		Part N°		12967		RFQ N°		000297	