

REV.	DESCRIPTION	DATE	DRAWN	APPROVED
A1	DWG.REL	2016/10/7	FANG	YANG

- Material
  - ①Screws : M2.5 steel, Zinc plated,
  - “\_” slot type
  - ②Housing : PA66, UL94V-0
  - ③Clamp : steel, Zinc plated
  - ④Pin header : Brass, Tin plated

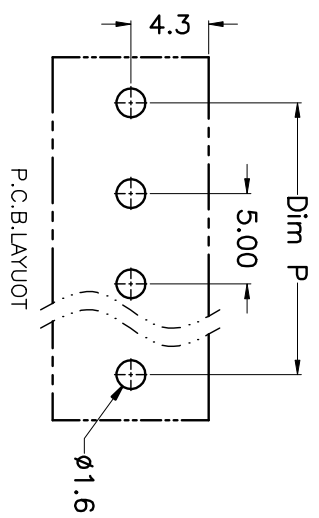
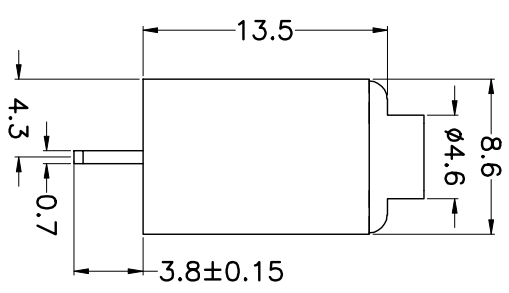
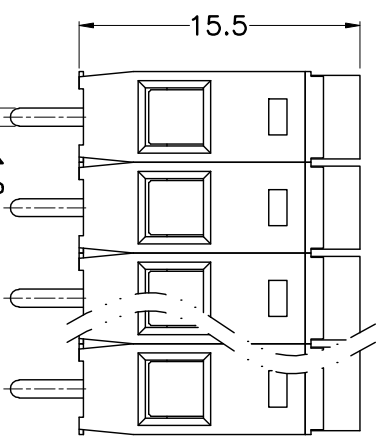
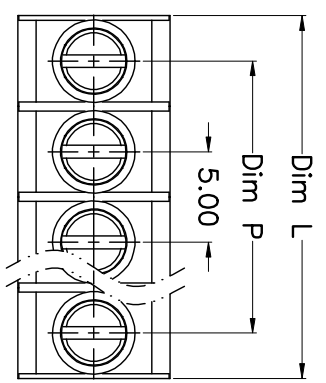
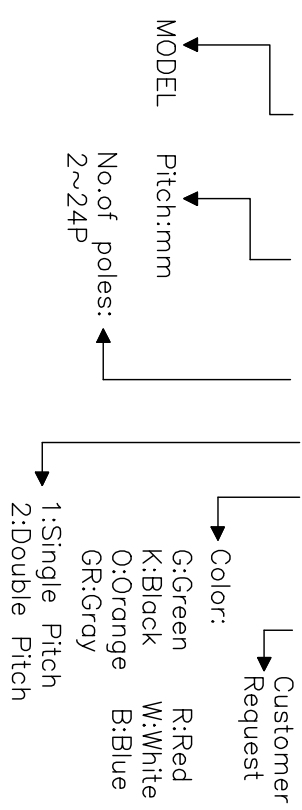
- Electrical
 

UL	IEC
Rated voltage : 300V	250V
Rated current : 15A	22A
Insulation resistance: 500MΩ/DC500V	
Withstanding Voltage : AC2000V/1min	
Wire range: 22-14AWG	0.5-2.5mm <sup>2</sup>

- Mechanical
  - Operating temperature: -40°C ~ +105°C
  - Soldering temperature: 250°C ± 5 / 5sec
  - Torque: 0.4N.m (3.54Lb.in)
  - Strip length: 5-6mm

### HOW TO ORDER

KF169-5.0-XXP-1 X-XXXXX



N=Number of Poles  
Dim P=(N-1)x5.00  
Dim L=Nx5.00

Poles	Dim P	Dim L
2-6P	±0.10	±0.15
7-12P	±0.20	±0.20
13-18P	±0.25	±0.30
19-24P	±0.30	±0.40

GENERAL TOLERANCE	ANGLE TOLERANCE
X: ±0.5 X: ±0.3 .XX ±0.1	X: ±5° X: ±3° .XX ±1°
DRAWING TYPE CUSTOMER	SHEET 1 OF 1
SCALE 1:1	
DRAWING NO. XP0012016-xxxx	

PROJECTION	TITLE
mm	KF169-5.0-XXP
SHEET SIZE A4	SERIES KF169

**KF 慈溪市凯峰电子有限公司**  
KAIFENG ELECTRONIC CIXI KAIFENG ELECTRONIC CO.,LTD