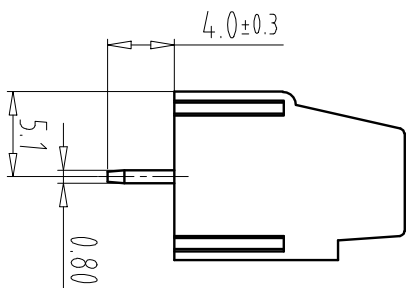
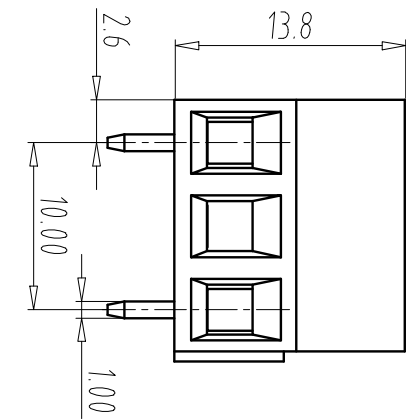
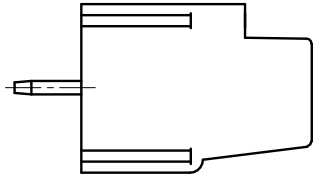
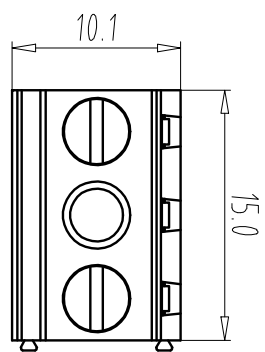


FILE: 2016-D02VUL0



PCB Layout

Total Pitch Tolerances		Nominal dimension range																					
In mm		In mm																					
over	0.18	over	±0.25	±0.3	±0.35	±0.44	±0.55	±0.70	±0.75	±0.20	±0.25	±0.30	±0.35	±0.44	±0.55	±0.70	±0.80	0.2	0.3	0.3	0.2	0.3	0.5
to	30	to	70	to	90	to	115	to	150	to	200	to	250	to	300	to	320	to	10	all	0	to	100
to	53	to	70	to	90	to	115	to	150	to	200	to	250	to	300	to	320	to	10	all	0	to	100
to	53	to	70	to	90	to	115	to	150	to	200	to	250	to	300	to	320	to	10	all	0	to	100
to	53	to	70	to	90	to	115	to	150	to	200	to	250	to	300	to	320	to	10	all	0	to	100

REV	ECN NO.	CONTENT	CHK	DATE
V0.0		新增成	ZCP	2016.11.15

NOTES:
 UL Standard
 1. Rating voltage/current: 300V/15A
 2. Withstanding voltage :AC2000V/1min
 3. Suitable Electric Wire:2-26AWG(U.L)

IEC Standard
 1. Rated voltage/current: 250V/20A
 2. Overvoltage category: III
 3. Rate impulse voltage(KV):4.0KV
 4. Suitable Electric Wire:0.2-2.5mm²

NOTES:
 1.Housing: PA66(U.L 94-V-0)
 2.Solder Pin: Brass(Sn Plated)
 3. Max soldering : +250° for 5S

NOTES:
 1.Pitch: 10.0mm Poles:02P
 2.Operating temperature: -40°C~+105°C
 3.RoHS Compliance

How to order
ULO-TB91 - 500/10.0 - 02P -4 0 0 0A

Certificate Factory poles color: Customer
 Series NO. Code 4:Green requirements

4	SCREW	S000000180	2	STEEL	M2.5/Zn Plated
3	SOLDERPIN 2	4013B0020	2	Brass	Tin Plated
2	BLOCK	X000000150	2	Brass	Ni Plated
1	HOUSING	4021A0V02A(2P)	1	PA66(V0)	GREEN

ITEM	NAME OF PART	NO. OF PART	Q-TY	MATERIAL	NOTE
DWG	TUO	DATE	2021.04.22	UNITS	MM
CHK	DATE		SCALE	1:1	A4
APP	DATE		NAME	ULO-TB91-500/10.0-02P-4000A	