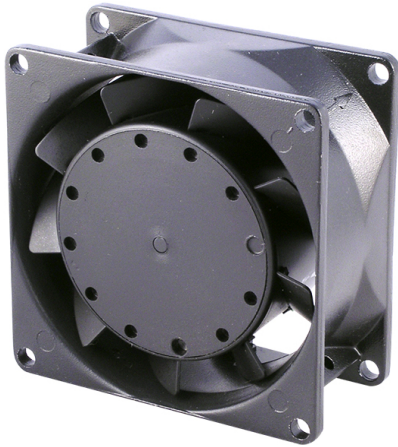


# A

# 8038M

80x80x38mm(3.15"x3.15"x1.5")



HOUSING	Aluminum Die Casting, Painted Black
IMPELLER	Metal
BEARING	Ball or Sleeve
OPERATING TEMPERATURE	-10°C to + 70°C
INSULATION	Class A
OPERATING VOLTAGE RANGE	85 VAC to 125 VAC for 115V Type 185 VAC to 245 VAC for 230V Type
DIELECTRIC STRENGTH	5mA Max. at 1500 VAC for 1 second
INSULATION RESISTANCE	10M Ω min. @500 VDC
MOTOR TYPE	Outer Rotor, Shaded Pole Motor
SAFETY	Impedance Protected
TERMINATION	Lead Wire
WEIGHT	420 g
ROHS COMPLIANCE	Yes
IP LEVEL	IP21 (Special IP Rating On Request)

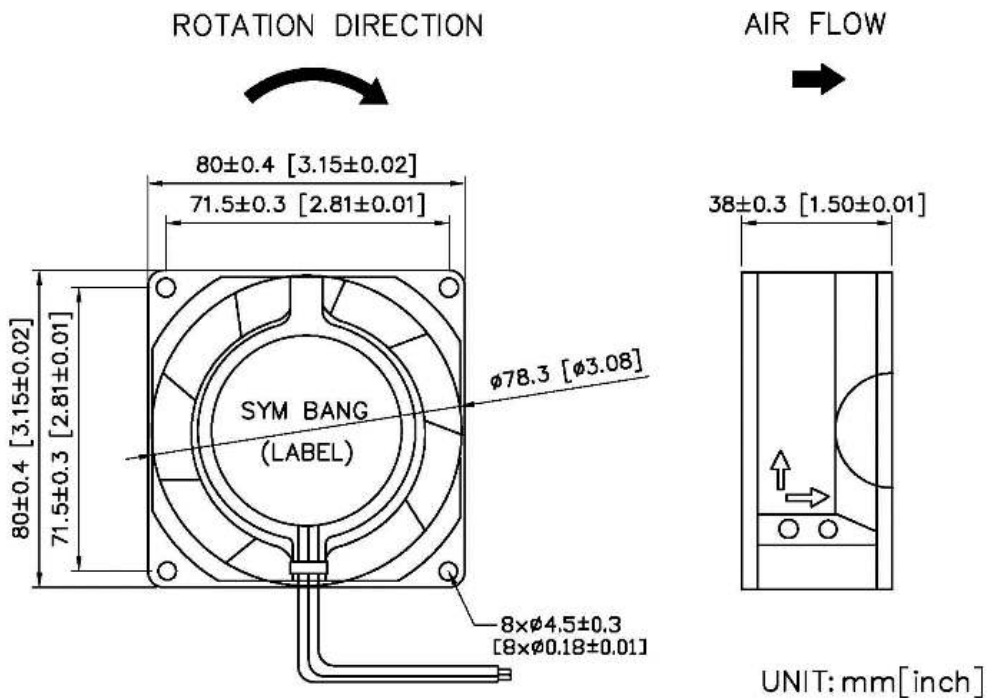
# 80

 mm

## SPECIFICATION

MODEL NO.	RATED VOLTAGE(V)	RATED CURRENT(A)	INPUT POWER(W)	SPEED (RPM)	MAX. AIR PRESSURE		MAX. AIR FLOW		NOISE dB(A) @1M
					inchH2O	mmH2O	CFM	m3/min	
A8038V1HM	115	0.14/0.12	13/12	2700/3100	0.12/0.14	2.90/3.40	26/30	0.74/0.88	30/35
A8038V1MM	115	0.12/0.10	10/9	2150/2500	0.09/0.13	2.28/3.30	21/23	0.60/0.65	24/27
A8038V1LM	115	0.08/0.06	10/9	1750/2000	0.08/0.09	1.95/2.35	17/16	0.50/0.47	21/23
A8038V2HM	230	0.10/0.12	13/12	2700/3100	0.12/0.14	2.90/3.40	26/30	0.74/0.88	30/35
A8038V2MM	230	0.08/0.07	10/9	2150/2500	0.09/0.13	2.28/3.30	21/23	0.60/0.65	24/27
A8038V2LM	230	0.07/0.07	12/11	1750/2000	0.08/0.09	1.95/2.35	17/16	0.50/0.47	21/23

## DIMENSION



SYMBANG

# AIR PERFORMANCE

