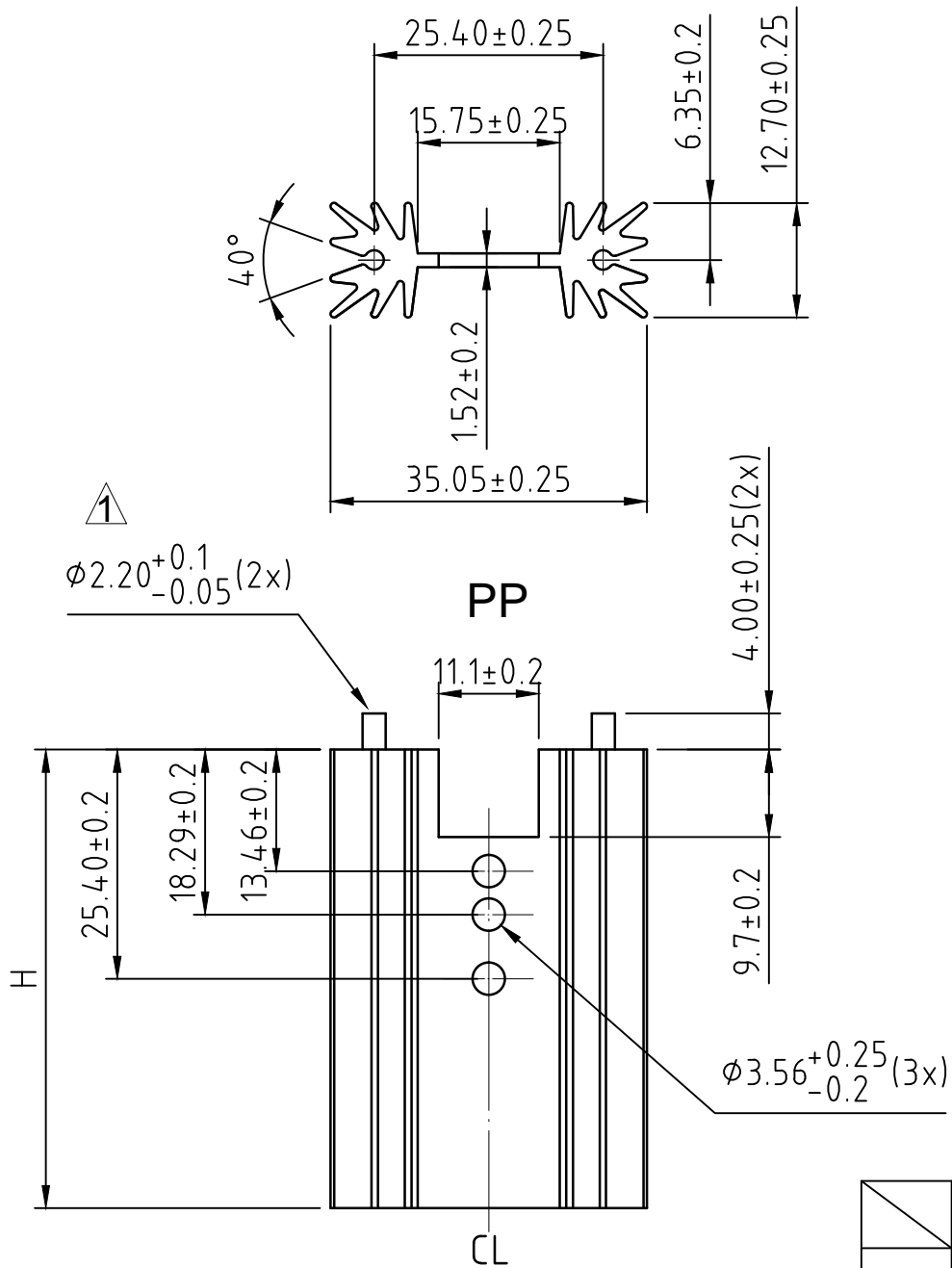


7-338



	H ± 0.25
1PP	38.1mm
2PP	44.45mm
3PP	50.8mm
4PP	63.5mm

NOTE:

1. Material : Al 6063
2. Finish : commercial black anodizing
3. tin plating on steel pins

UNLESS OTHERWISE SPEC.
DIMENSIONS ARE IN MM
TOLERANCES ON

龍德精密有限公司

LDMC

Metal Stamping

E-MAIL: lungde@lungder.com.tw

LONG DER MACHINERY CO.,LTD.

DECIMAL: .X \pm .XX \pm .XXX \pm

ITEM

HEAT SINK

THIRD ANGLE PROJECTION

ANGLE: \pm

MATERIAL:

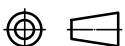
SCALE

PART NO:

LDM-EXT-7338

REV

1



1

2

3

4