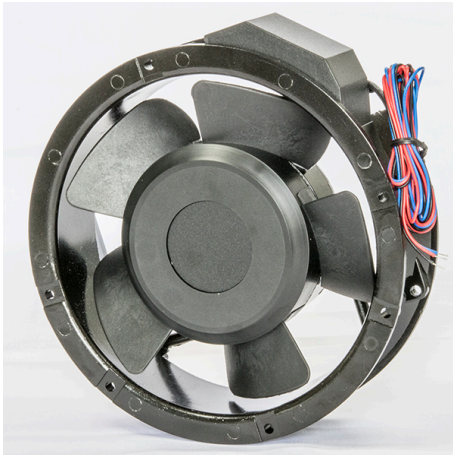


# A

# 17051-S

Ø172x51mm(Ø6.8"x2")



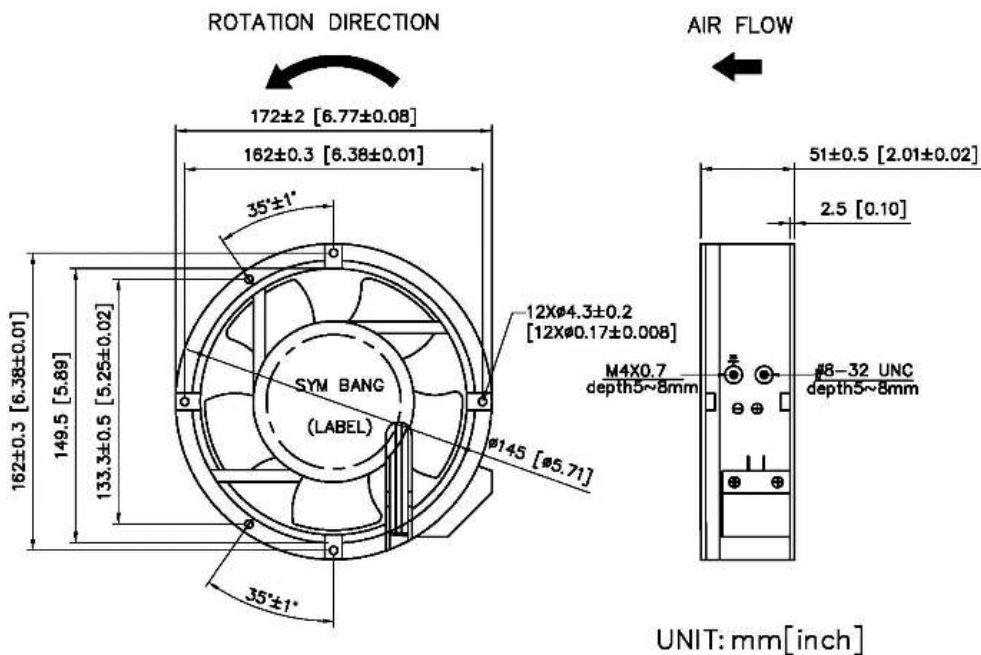
HOUSING	Aluminum Die Casting, Painted Black
IMPELLER	Thermoplastic PBT, UL94V-0
BEARING	Ball
OPERATING TEMPERATURE	-10°C to + 70°C
INSULATION	Class A
OPERATING VOLTAGE RANGE	100 VAC to 120 VAC for 115V Type 200 VAC to 240 VAC for 230V Type
DIELECTRIC STRENGTH	5mA Max. at 1500 VAC for 1 second
INSULATION RESISTANCE	10M Ω min. @500 VDC
MOTOR TYPE	AC Induction Capacitor Motor
SAFETY	Thermally Protected
TERMINATION	Terminals or Lead Wire
WEIGHT	875 g
ROHS COMPLIANCE	Yes
OPTIONAL FUNCTION	FG, RD
IP LEVEL	IP21 (Special IP Rating On Request)

# 172 mm

## SPECIFICATION

MODEL NO.	RATED VOLTAGE(V)	RATED CURRENT(A)	INPUT POWER(W)	SPEED (RPM)	MAX. AIR PRESSURE		MAX. AIR FLOW		NOISE dB(A) @1M
					inchH2O	mmH2O	CFM	m3/min	
A17051V1S-S	115	0.30/0.25	46.0/46.3	2800/3230	0.48/0.62	12.3/15.8	240/286	6.79/8.09	56
A17051V1H-S	115	0.23/0.25	26.7/29.7	2800/3200	0.52/0.64	13.4/16.4	190/235	5.40/6.60	50
A17051V1M-S	115	0.15/0.19	16.1/21.0	2550/2400	0.37/0.33	9.4/8.6	165/170	4.70/4.80	40
A17051V1L-S	115	0.18/0.15	19.8/18.2	1450/1750	0.13/0.18	3.4/4.8	96/108	2.70/3.05	32
A17051V2S-S	230	0.30/0.25	57.2/52.8	2800/3200	0.48/0.62	12.3/15.8	240/286	6.79/8.09	56
A17051V2H-S	230	0.31/0.26	49.1/42.8	2650/2950	0.52/0.64	13.4/16.4	190/235	5.40/6.60	50
A17051V2M-S	230	0.09/0.11	17.9/22.8	2550/2300	0.37/0.33	9.4/8.6	165/170	4.70/4.80	40
A17051V2L-S	230	0.08/0.07	17.9/17.1	1450/1750	0.13/0.18	3.4/4.8	96/108	2.70/3.05	32

## DIMENSION



SYMBANG

# AIR PERFORMANCE

