

R5 Ultra-Miniature SMD Reed Sensor

These SMD Ultra-Miniature Reed Sensors are designed for signal switching applications and have a size advantage over the standard size SMD reed sensor. As they are molded with pre-flattened leads, no shock is transferred into the device when SMD formation takes place. Various actuating distances are available depending on the magnet and the AT band used. These Ultra-Miniature Reed Sensors are tested 100% for Operate AT, Release AT, Static Contact Resistance and Variable Contact Resistance before packing. Being an Omni-polar device, this sensor can be actuated with either a north pole or a south pole or both. Choosing the right AT band, magnet strength, and operating axis, will restrict the number of operates and releases to one. All dimensions are in mm.

FEATURES

- Normally Open contact.
- Two sensitivity bands.
- Packed in Tapes for automatic assembly.

APPLICATIONS

- Reed sensors for detecting Ignition Key
- Reed switches in Lightsabers
- Magnet sensors in Musical Greeting Cards
- Reed sensors in Radio-controlled Gliders
- Reed sensors in Accurate level sensing of fluids
- Reed switches in Washing machine vibration
- Reed sensors in electric toothbrushes
- Reed switches and Reed sensors in Spirometers
- Miniature Reed sensors in activating Dentist's Drill

ELECTRICAL

Contact Form		A
Contact Rating (max)	W/VA	5.0
Switching Current (max)	A	0.35
Carry Current (max)	A	0.5
DC Switching Voltage (max)	VDC	100
Breakdown Voltage (min)	VDC	150
Contact Resistance (max)	mΩ	200
Insulation Resistance (min)	Ω	109
Capacitance (typ)	pF	0.2

R5 Ultra-Miniature SMD Reed Sensor

MISCELLANEOUS

Operate Time (max)	ms	0.35
Bounce Time (max)	ms	0.30
Release Time (max)	ms	0.10
Resonance Frequency (typ)	Hz	<2000
Operating Frequency (max)	Hz	500
Operating Temperature Range	°C	-40 to +140
Shock Resistance (½Sin wave for 11ms)	G	30
Vibration Resistance (10-2000 Hz)	G	20

ORDERING CODE

RS-R5-(Formation Code)-(Operate Band)

Formation Code	Lead Type
S	Gull-wing SMD
J	J-Lead SMD

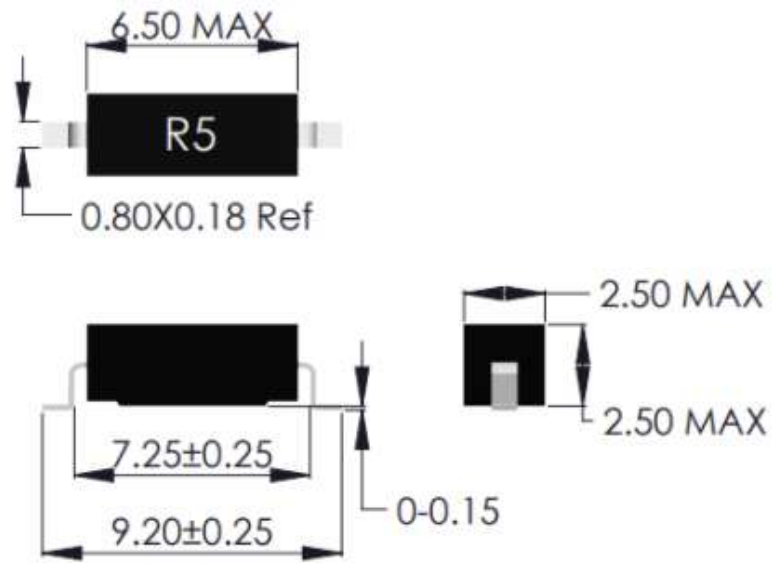
Operate Band Code		
1	AT	7-12
2	AT	12-17

Examples: RS-R5-S-1 denotes Gull-wing SMD version in 7-12 Operate Band (AT). RS-R5-J-2 denotes J-Lead Formed SMD Lead version in 12-17 Operate Band (AT).

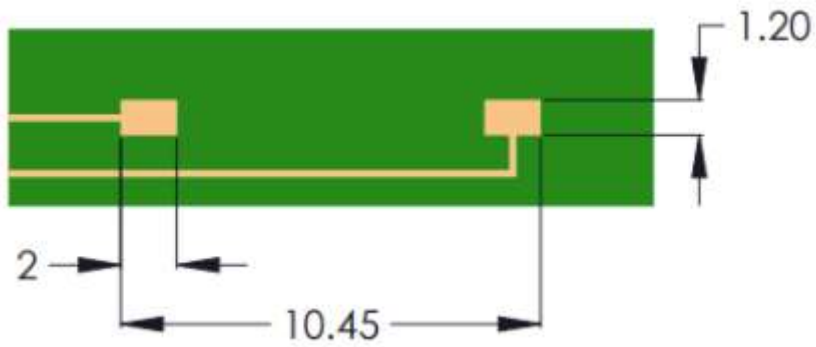
Other Special Configurations: Lower Static Contact Resistance, Dynamic Contact Resistance Limit, Higher Insulation Resistance, Special Release Limits, Gold plated leads.

R5 Ultra-Miniature SMD Reed Sensor

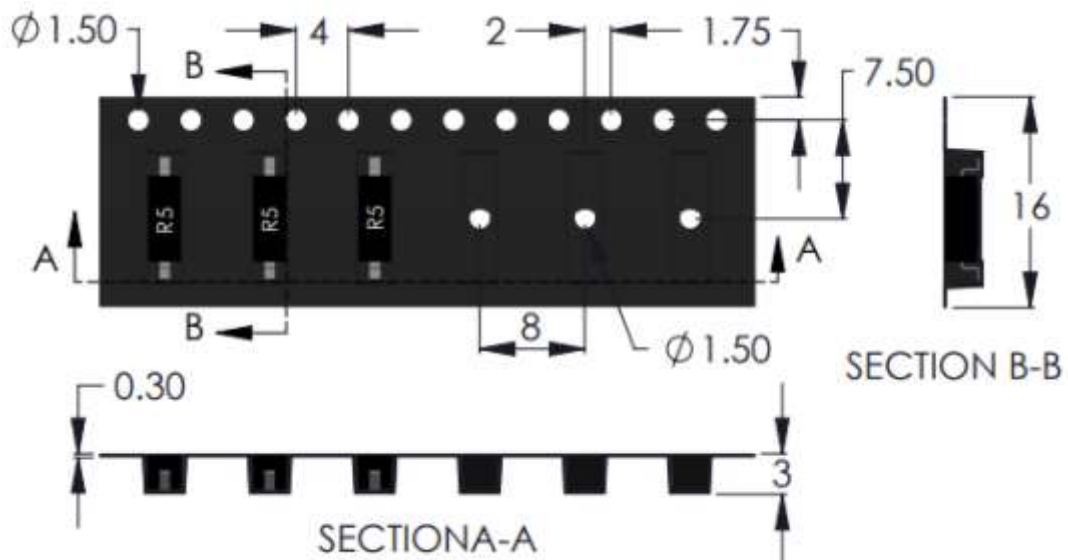
RS-R5-S SMD Reed Sensor



RS-R5-S Reed Sensor PCB Layout drawing

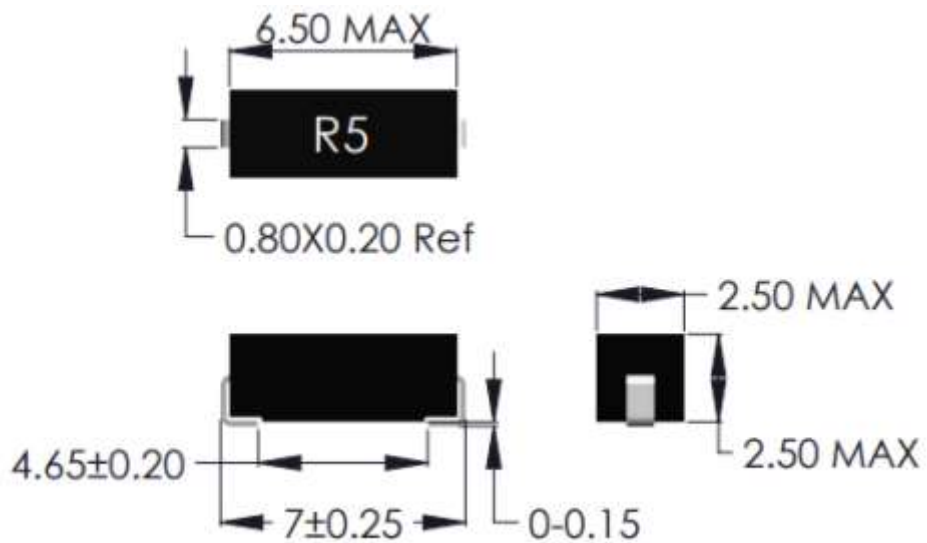


RS-R5-S Reed Sensor Packing Tape

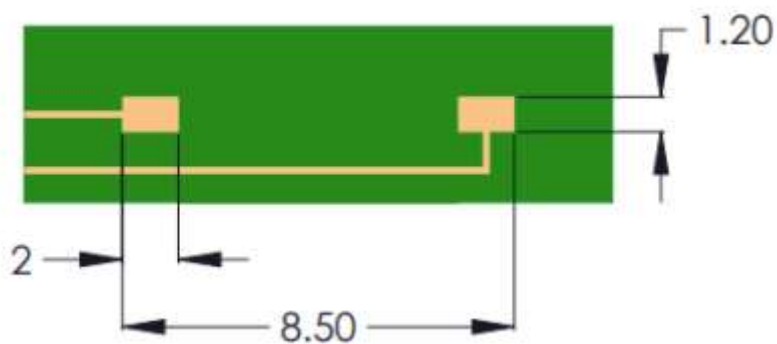


R5 Ultra-Miniature SMD Reed Sensor

RS-R5-J SMD Reed Sensor



RS-R5-J Reed Sensor PCB Layout drawing



RS-R5-J Reed Sensor Packing Tape

