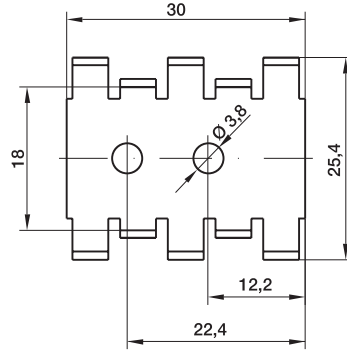
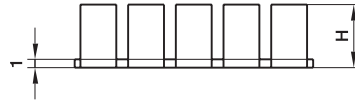


KL-162 + 166



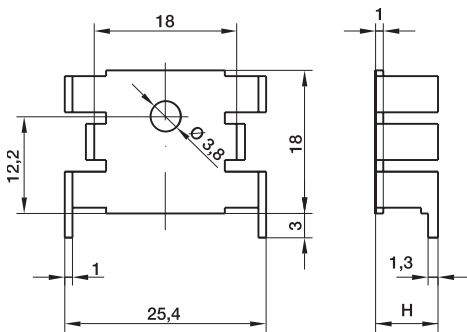
KL-166



KL-163 + 167



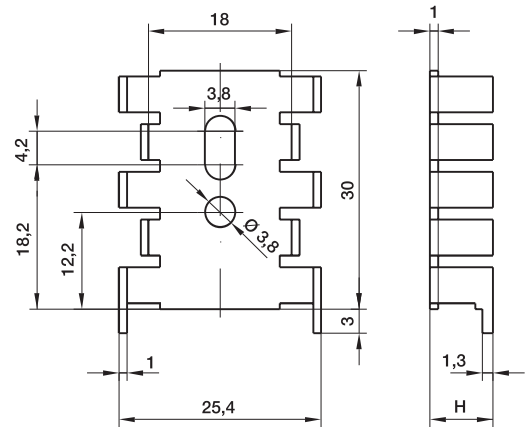
KL-167



KL-164 + 168



KL-168



KL-165 + 169

KL-169



Typ Type	Artikel-Nr. Part no.	Material	Oberfläche Surface finish	Abmessung Dimension H	Thermischer Widerstand Thermal resistance (K/W)
KL-162/sw	1620041	Al 99,5	sw	7,9	25
KL-163/sw	1630041	Al 99,5	sw	7,9	18
KL-164/sw	1640041	Al 99,5	sw	7,9	24
KL-164/sn	1640044	Al 99,5	sn	7,9	25
KL-165/sw	1650041	Al 99,5	sw	7,9	18
KL-165/sn	1650044	Al 99,5	sw	7,9	19
KL-166/sw	1660041	Al 99,5	sw	12,7	21
KL-167/sw	1670041	Al 99,5	sw	12,7	15
KL-168/sw	1680041	Al 99,5	sw	12,7	20
KL-168/sn	1680044	Al 99,5	sn	12,7	21
KL-169/sw	1690041	Al 99,5	sw	12,7	15
KL-169/sn	1690044	Al 99,5	sn	12,7	16

sn: Verzinkt/Tinned  
sw: Schwarz eloxiert/Black anodized