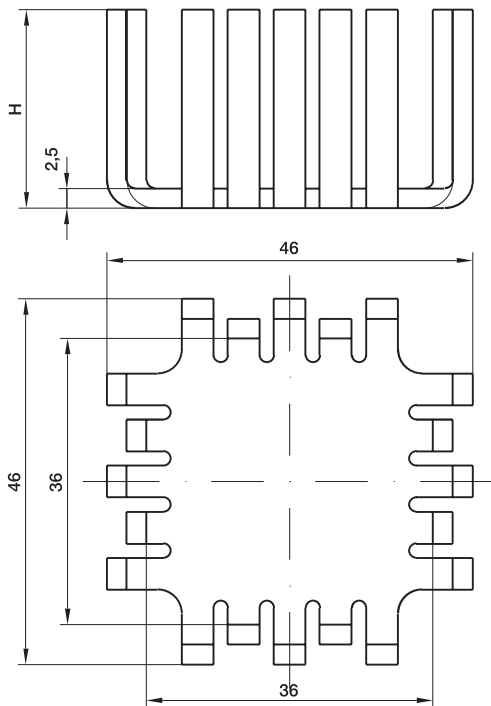


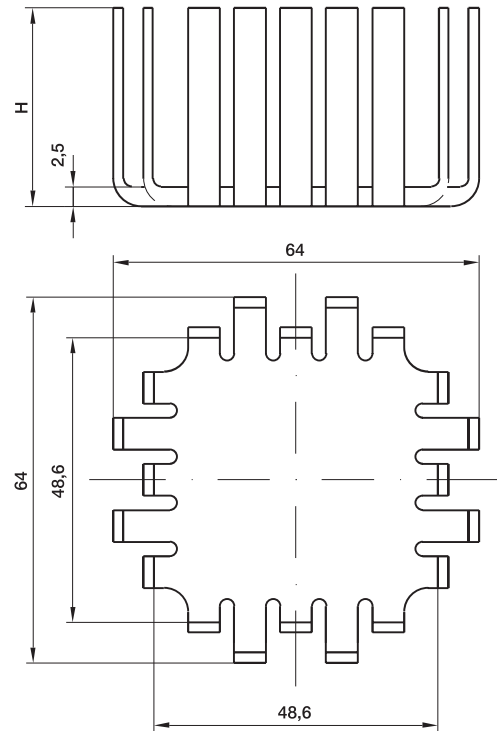
KL-151



KL-151



KL-152 + 153



| Typ<br>Type         | Artikel-Nr.<br>Part no. | Material | Oberfläche<br>Surface finish | Lochbild<br>Hole pattern | Abmessung<br>Dimension<br>H | Thermischer Widerstand<br>Thermal resistance<br>(K/W) |
|---------------------|-------------------------|----------|------------------------------|--------------------------|-----------------------------|---|
| KL-151/3/sw         | 1510011                 | Al 99,5  | sw                           | TO-3                     | 25,4                        | 6   |
| KL-151/3/9/32/66/sw | 1510031                 | Al 99,5  | sw                           | TO-3/9/32/66             | 25,4                        | 6   |
| KL-152/3/sw         | 1520011                 | Al 99,5  | sw                           | TO-3                     | 23                          | 4,3   |
| KL-152/3/9/32/66/sw | 1520031                 | Al 99,5  | sw                           | TO-3/9/32/66             | 23                          | 4,3   |
| KL-153/3/sw         | 1530011                 | Al 99,5  | sw                           | TO-3                     | 32                          | 3,2   |
| KL-153/3/9/32/66/sw | 1530031                 | Al 99,5  | sw                           | TO-3/9/32/66             | 32                          | 3,2   |

sw: Schwarz eloxiert/Black anodized