

DAISY-7X1-FT-D

Forward throwing beam for freestanding office luminaires

TECHNICAL SPECIFICATIONS:

Dimensions	19.0 x 259.0 mm
Height	0 mm
Fastening	pin, screw
ROHS compliant	yes ⓘ

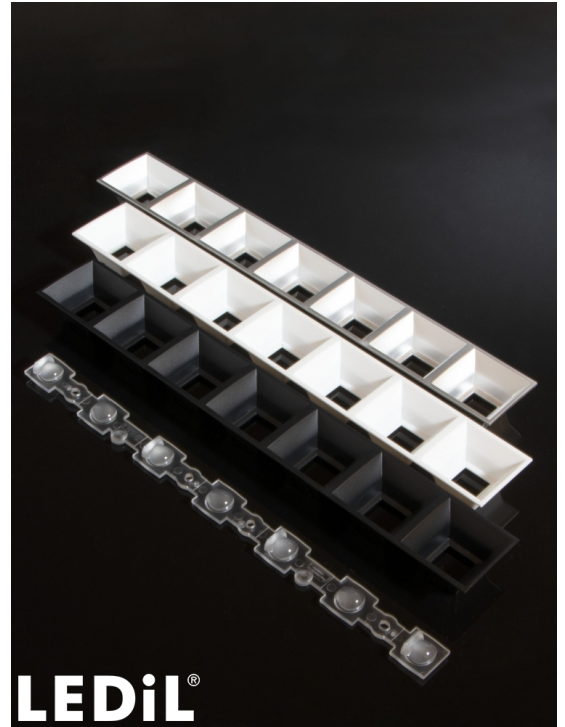
MATERIAL SPECIFICATIONS:

Component	Type	Material	Colour	Finish
C18244_DAISY-7X1-FT-D	Linear lens	PMMA	milky	
C16872_DAISY-7X1-SHD	Shade	PC	black	gloss
C16876_DAISY-7X1-SHD-WHT	Shade	PC	white	gloss
C17051_DAISY-7X1-SHD-MATT	Shade	PC	black	matt
C17225_DAISY-7X1-SHD-WHT-MATT	Shade	PC	white	matt
C18167_DAISY-7X1-SHD-MET	Shade	PC	metal	gloss
C18409_DAISY-7X1-SHD-MET-MATT	Shade	PC	metal	matt

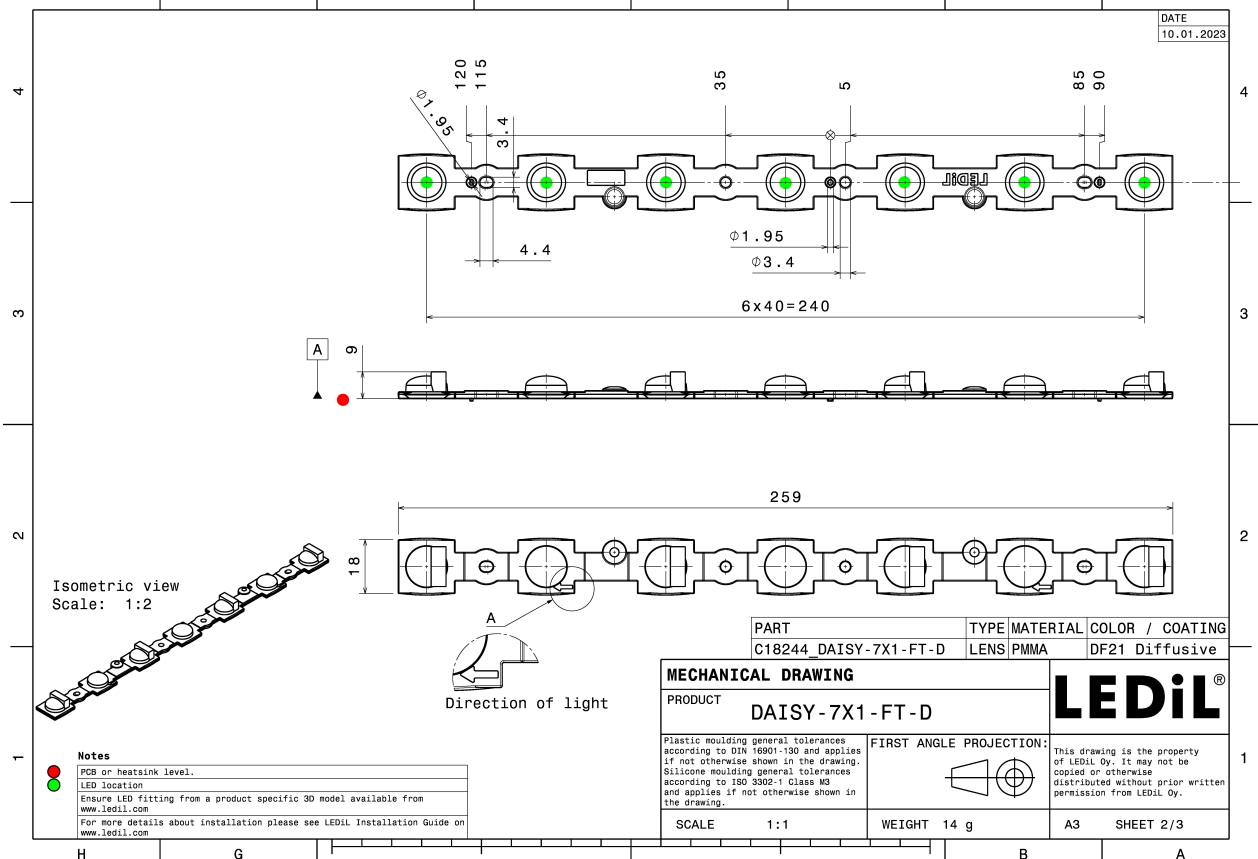
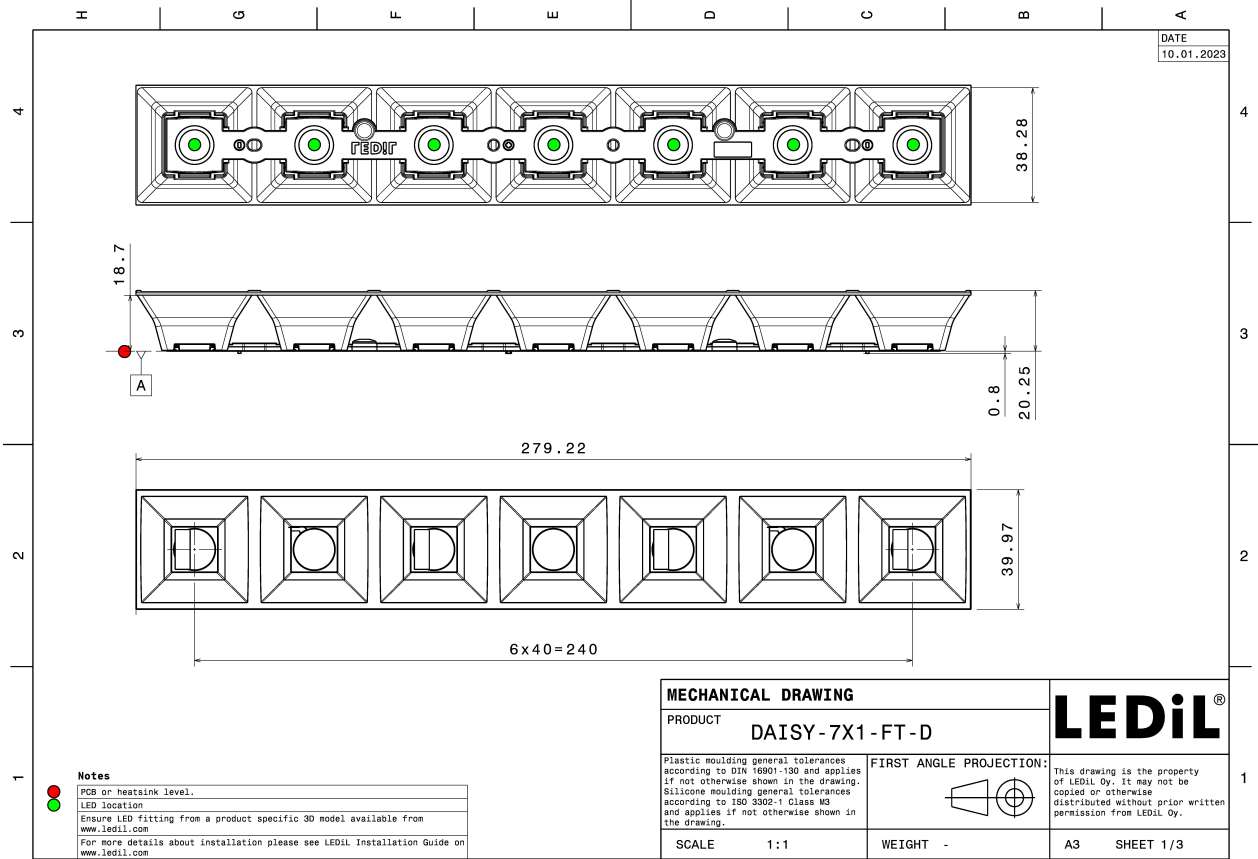
ORDERING INFORMATION:

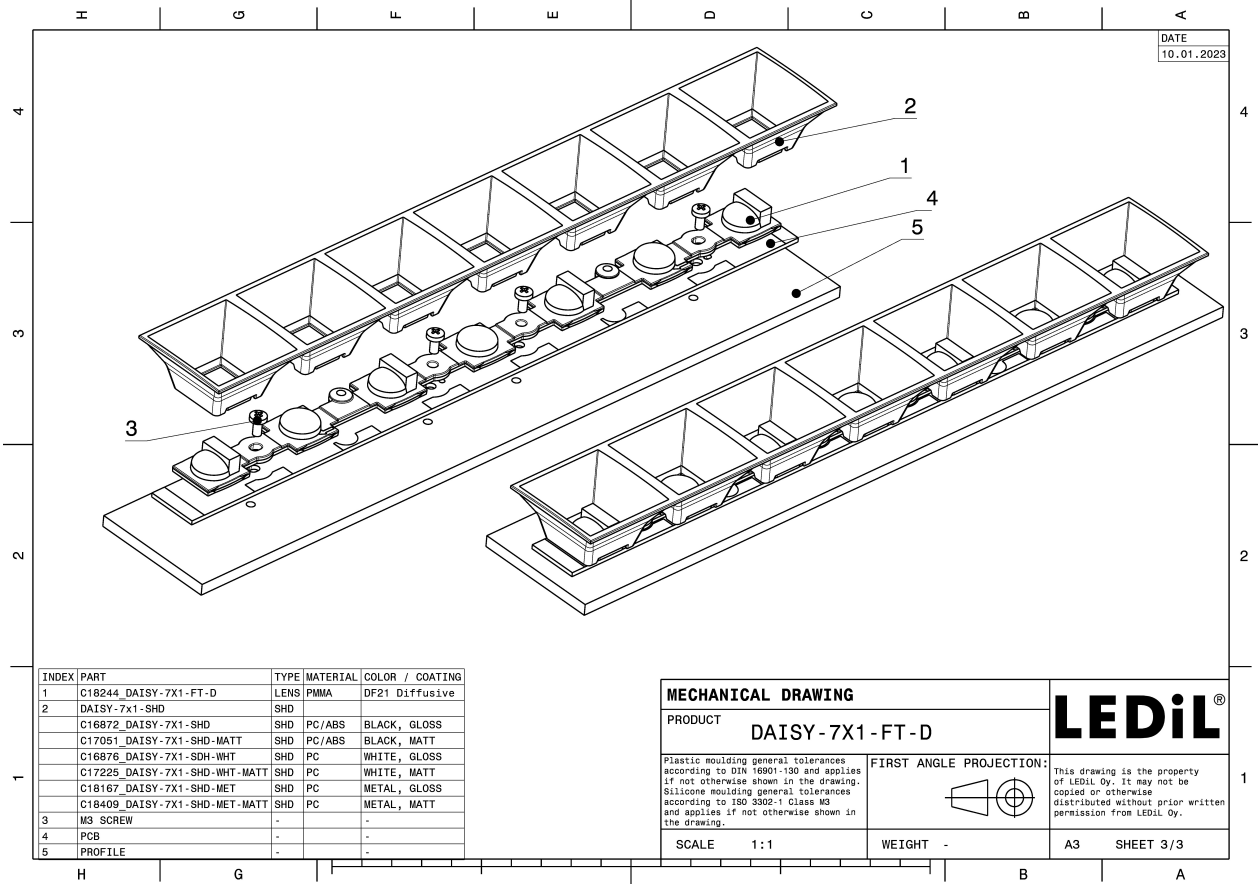
Quantities for one set:

Linear lens	1
Shade	1



Component		Qty in box	MOQ	MPQ	Box weight (kg)
C18244_DAISY-7X1-FT-D	Linear lens	312	192	24	5.6
» Box size: 400 x 300 x 300 mm					
C16872_DAISY-7X1-SHD	Shade	156	192	24	7.1
» Box size: 595 x 360 x 230 mm					
C18167_DAISY-7X1-SHD-MET	Shade	156	192	24	7.0
» Box size: 595 x 360 x 230 mm					
C16876_DAISY-7X1-SHD-WHT	Shade	156	192	24	7.6
» Box size: 595 x 360 x 230 mm					
C17051_DAISY-7X1-SHD-MATT	Shade	156	192	24	7.3
» Box size: 595 x 360 x 230 mm					
C18409_DAISY-7X1-SHD-MET-MATT	Shade	156	192	24	7.0
» Box size: 595 x 360 x 230 mm					
C17225_DAISY-7X1-SHD-WHT-MATT	Shade	156	192	24	7.6
» Box size: 595 x 360 x 230 mm					





See also our general installation guide: www.ledil.com/installation_guide

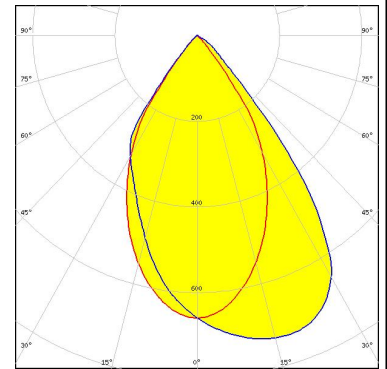
PHOTOMETRIC DATA (MEASURED):

<p>LUMILEDS</p> <p>LED LUXEON HL2Z FWHM / FWTM Asymmetric Efficiency 75 % Peak intensity 0.7 cd/lm LEDs/each optic 2 Light colour White Required components: C17051_DAISY-7X1-SHD-MATT</p>	
<p>MST <i>Your solutions</i></p> <p>LED LinLED 280x20mm 2x550lm 827-865 2x2C 42V DAISY-MINI G1 FWHM / FWTM Asymmetric Efficiency 72 % Peak intensity 0.6 cd/lm LEDs/each optic 1 Light colour White Required components: C16872_DAISY-7X1-SHD</p>	
<p>MST <i>Your solutions</i></p> <p>LED LinLED 280x28mm 1100lm 8x0 2C 42V Opt G1 FWHM / FWTM Asymmetric Efficiency 72 % Peak intensity 0.6 cd/lm LEDs/each optic 4 Light colour White Required components: C16872_DAISY-7X1-SHD</p>	
<p>MST <i>Your solutions</i></p> <p>LED LinLED 280x28mm 1600lm 840 4C 21V DAISY 7x1(ZT25) FWHM / FWTM Asymmetric Efficiency 75 % Peak intensity 0.7 cd/lm LEDs/each optic 1 Light colour White Required components: C16872_DAISY-7X1-SHD</p>	

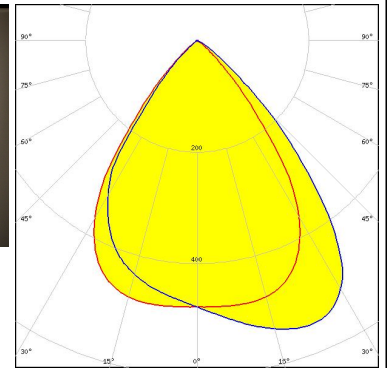
PHOTOMETRIC DATA (MEASURED):



LED NCSxE17A
FWHM / FWTM Asymmetric
Efficiency 72 %
Peak intensity 0.7 cd/lm
LEDs/each optic 1
Light colour White
Required components:
C17051_DAISY-7X1-SHD-MATT



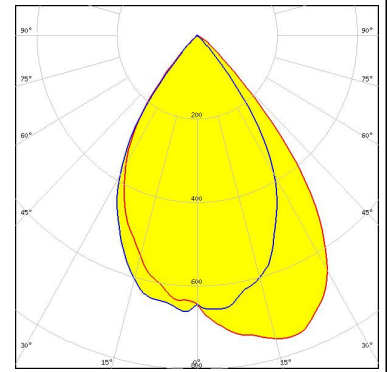
LED PL-LIN-2000 280x24mm
FWHM / FWTM Asymmetric
Efficiency 71 %
Peak intensity 0.6 cd/lm
LEDs/each optic 4
Light colour White
Required components:
C17051_DAISY-7X1-SHD-MATT



PHOTOMETRIC DATA (SIMULATED):

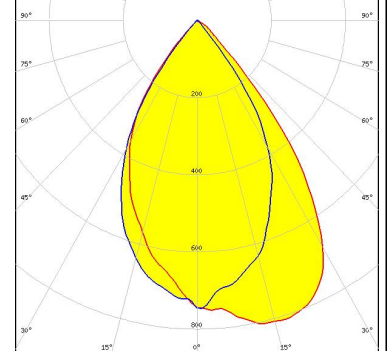
LUMILEDS

LED LUXEON 5050 Square LES
FWHM / FWTM Asymmetric
Efficiency 80 %
Peak intensity 0.8 cd/lm
LEDs/each optic 1
Light colour White
Required components:
C16872_DAISSY-7X1-SHD



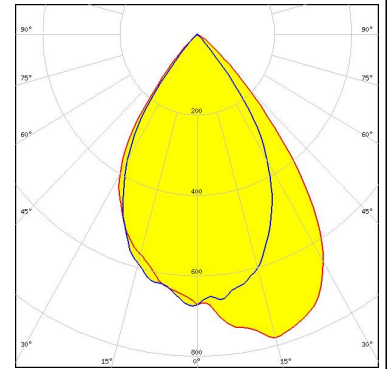
SAMSUNG

LED LH231B
FWHM / FWTM Asymmetric
Efficiency 80 %
Peak intensity 0.8 cd/lm
LEDs/each optic 1
Light colour White
Required components:
C16872_DAISSY-7X1-SHD



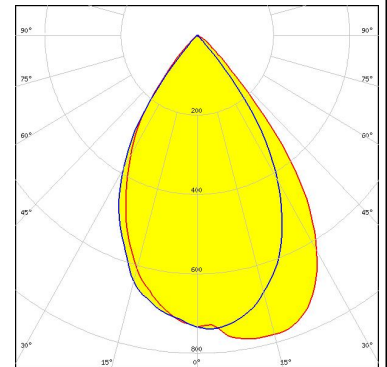
SAMSUNG

LED LH231B
FWHM / FWTM Asymmetric
Efficiency 79 %
Peak intensity 0.8 cd/lm
LEDs/each optic 2
Light colour White
Required components:
C16872_DAISSY-7X1-SHD



SAMSUNG

LED LM28xB Series
FWHM / FWTM Asymmetric
Efficiency 81 %
Peak intensity 0.8 cd/lm
LEDs/each optic 2
Light colour White
Required components:
C16872_DAISSY-7X1-SHD



GENERAL INFORMATION:

NOTE: The typical beam angle will be changed by different color, chip size and chip position tolerance. The typical total beam angle is the full angle measured where the luminous intensity is half of the peak value.

MATERIALS:

As part of our continuous research and improvement processes, and to ensure the best possible quality and availability of our products, LEDiL reserves the right to change material grades without notice.

PRODUCT DATA USER AGREEMENT AND DISCLAIMER:

The measured data in the provided downloadable LEDiL Product Datasheets and Mechanical 2D-Drawings is rounded and provided as reference for planning. LEDiL Oy's optical specifications have been verified by conducting performance testing of the products in accordance with the company's quality system. The reported data are averaged results of multiple measurements with typical variation. LEDiL Oy reserves the right to without prior notification make changes and improvements to its products.

LEDiL Oy assumes neither warranty, nor guarantee nor any other liability of any kind for the contents and correctness of the provided data. The provided data has been generated with highest diligence but the provided data may in reality not represent the complete possible variation range of all intrinsic parameters. Therefore, in certain cases a deviation from the provided data could occur.

LEDiL Oy reserves the right to undertake technical changes of its products without further notification which could lead to changes in the provided data. LEDiL Oy assumes no liability of any kind for the possible deviation from any provided data or any other damage resulting from the usage of the provided data.

The user agrees to this disclaimer and user agreement with the download or usage of the provided files.

LEDiL Oy

Joensuunkatu 13
FI-24240 SALO
Finland

LEDiL Inc.

228 West Page Street
Suite D
Sycamore IL 60178
USA

Ledil Optics Technology (Shenzhen) Co., Ltd.

405 , Block B
Casic Motor Building
Shenzhen 518057
P.R.CHINA

Local sales and technical support

[www.ledil.com/
where_to_buy](http://www.ledil.com/where_to_buy)

Shipping locations

Salo, Finland
Hong Kong, China

Distribution Partners

[www.ledil.com/
where_to_buy](http://www.ledil.com/where_to_buy)