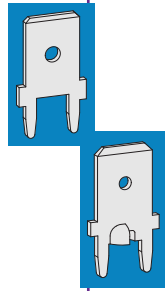
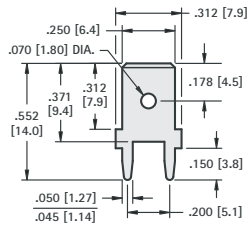


.250 (6.4) TAB

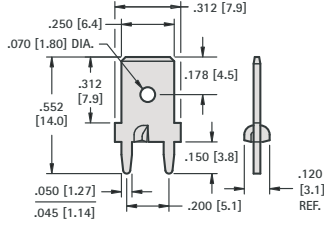


CAT. NO.	MATERIAL	MTG. HOLES
1287	.032 (.81) Brass, Tin Plate	.052 (1.3) Dia.

NOTE: see page 66 for continuous reel packaging

.250 (6.4) TAB

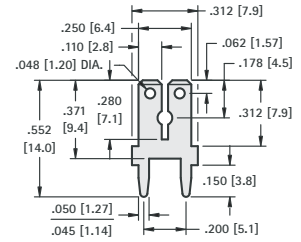
STURDI-MOUNT



CAT. NO.	MATERIAL	MTG. HOLES
1287-ST	.032 (.81) Brass, Tin Plate	.052 (1.3) Dia.

NOTE: see page 66 for continuous reel packaging

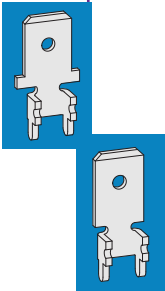
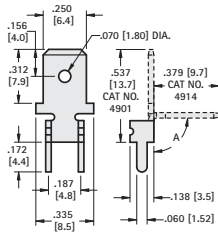
DUAL .110 (2.8)/.250 (6.4) TAB



CAT. NO.	MATERIAL	MTG. HOLES
1282	.032 (.81) Brass, Tin Plate	.052 (1.3) Dia.

.250 (6.4) TAB

STURDI-MOUNT

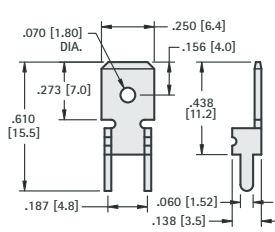


MATERIAL: .032 (.81) Brass, Matte Tin Plate

CAT. NO.	ANGLE A	MTG. HOLES
4901	0°	.067 (1.7) Dia.
4914	90°	

.250 (6.4) TAB

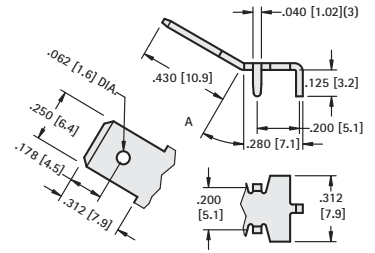
STURDI-MOUNT



CAT. NO.	MATERIAL	MTG. HOLES
4902	.032 (.81) Brass, Tin Plate	.067 (1.7) Dia.

.250 (6.4) TAB

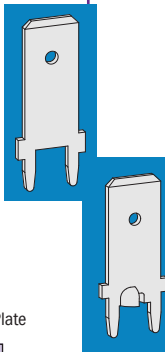
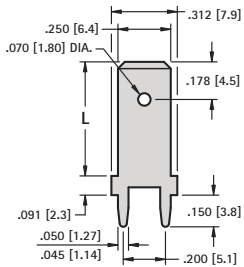
STURDI-MOUNT



MATERIAL: .032 (.81) Brass, Matte Tin Plate

CAT. NO.	ANGLE A	MTG. HOLES
4910	0°	.052 (1.3) Dia.
4908	30°	
4912	60°	

.250 (6.4) TAB

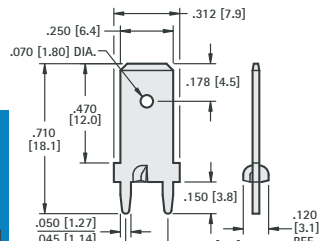


MATERIAL: .032 (.81) Brass, Matte Tin Plate

CAT. NO.	"L"	MTG. HOLES
1289	.540 (13.7)	.052 (1.3) Dia.
1203	.657 (16.7)	
1292	.710 (18.0)	
1225	1.039 (26.4)	

.250 (6.4) TAB

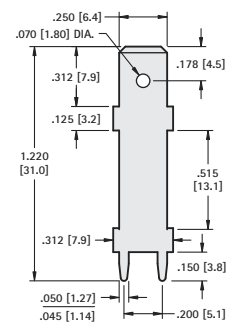
STURDI-MOUNT



CAT. NO.	MATERIAL	MTG. HOLES
1289-ST	.032 (.81) Brass, Tin Plate	.052 (1.3) Dia.

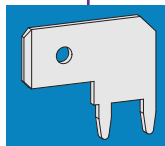
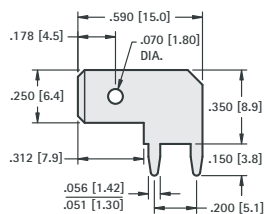
NOTE: see page 66 for continuous reel packaging

.250 (6.4) TAB



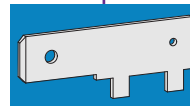
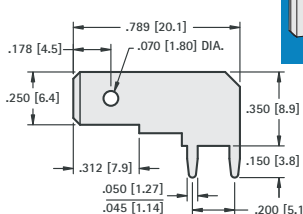
CAT. NO.	MATERIAL	MTG. HOLES
1281	.032 (.81) Brass, Tin Plate	.052 (1.3) Dia.

.250 (6.4) TAB



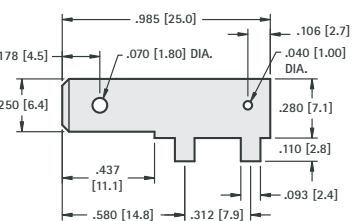
CAT. NO.	MATERIAL	MTG. HOLES
4966	.032 (.81) Brass, Tin Plate	.056 (1.4) Dia.

.250 (6.4) TAB



CAT. NO.	MATERIAL	MTG. HOLES
1266	.032 (.81) Brass, Tin Plate	.052 (1.3) Dia.

.250 (6.4) TAB



CAT. NO.	MATERIAL	MTG. HOLES
1265*	.032 (.81) Brass, Tin Plate	.106 (2.7) Dia.

* Not UL Recognized