

SLIDE-IN PC MOUNT CONTACTS



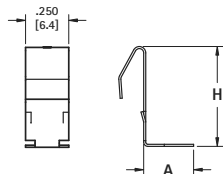
- Reliable spring tension assure low contact resistance and dependable connection
- Symmetrical design allows these contacts to function both as a positive and negative contacts
- Economical and reliable contacts
- Designed for direct placement onto PCB, no wire leads required
- Unique spring tension adjusts to variations in battery length
- Stainless Steel contacts provide superior corrosion resistance

MATERIAL: .012 (.30) Stainless Steel

Refer to pages 39 & 41 for Battery Contact Layout & Mounting Details

SURFACE MOUNT

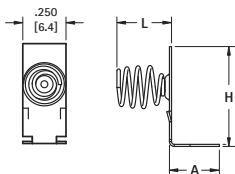
LEAF SPRING



Finish: Gold Plate (Flash)

CAT. NO.	BATTERY SIZE	H	A
1020-1	"AAA"	.435 (11.1)	.250 (6.4)
1016-1	"AA"	.578 (14.9)	.289 (7.3)

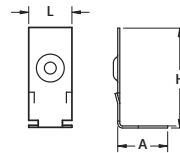
COIL SPRING



Finish: Gold Plate (Flash)

CAT. NO.	BATTERY SIZE	H	L	A
1076-2	"AAA"	.435 (11.1)	.325 (8.3)	.250 (6.4)
1088-2	"AA"	.578 (14.9)	.313 (8.0)	.289 (7.3)

BUTTON CONTACT

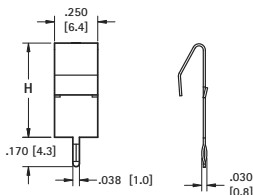


Finish: Gold Plate (Flash)

CAT. NO.	BATTERY SIZE	H
1076-1	"AAA"	.395 (10.0)
1088-1	"AA"	.545 (13.8)

THRU HOLE MOUNT

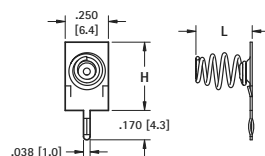
LEAF SPRING



Finish: Tin-Nickel Plate

CAT. NO.	BATTERY SIZE	H
1021-1	"AAA"	.405 (10.3)
1017-1	"AA"	.545 (13.8)

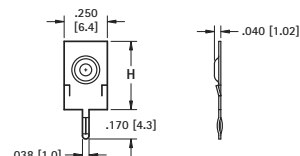
COIL SPRING



Finish: Tin-Nickel Plate

CAT. NO.	BATTERY SIZE	H	L
1075-2	"AAA"	.395 (10.0)	.326 (8.3)
1087-2	"AA"	.545 (13.8)	.313 (8.0)

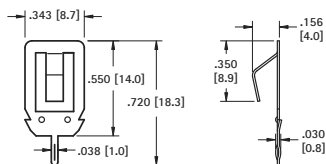
BUTTON CONTACT



Finish: Tin-Nickel Plate

CAT. NO.	BATTERY SIZE	H	A
1075-1	"AAA"	.435 (11.1)	.250 (6.4)
1087-1	"AA"	.578 (14.9)	.289 (7.3)

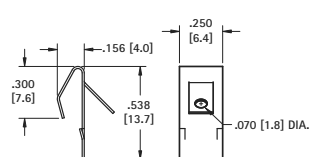
"AAA" · "N" · "AA" · "CR2" · "A"



Finish: Tin-Nickel Plate

CAT. NO. 108-2

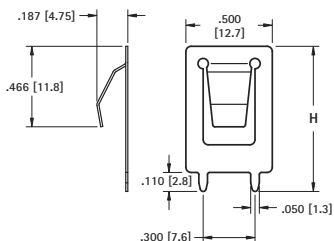
"AA" · "A" · "17500" · "18350" · "18650" · "C" · "D"



Finish: Tin-Nickel Plate

CAT. NO. 1107-1

Solder Lug

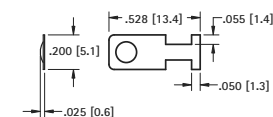


MATERIAL: .012 (.30) Spring Steel, Nickel Plate

CAT. NO.	(H) Height	BATTERY REFERENCE
109-2	.840 (21.3)	"AA" · "A" · "17500" · "18350" · "18650" · "C"
109-3	1.000 (25.4)	"20700" · "21700" · "D"

"AAA" · "AAAA" · "N" · "12V"

"Off-Board" edge mounting design frees up valuable board space



CAT. NO. 230-1

MATERIAL: .008 (.20) Spring Steel, Nickel Plate

