

Material :

- \* Body : Glass Filled Nylon 6T UL 94V-0
- \* Slider : PPS With 40% GF. UL 94V-0
- Color Brown
- \* Contact : Copper Alloy
- \* Fixed tab : Copper Alloy with Tin plated

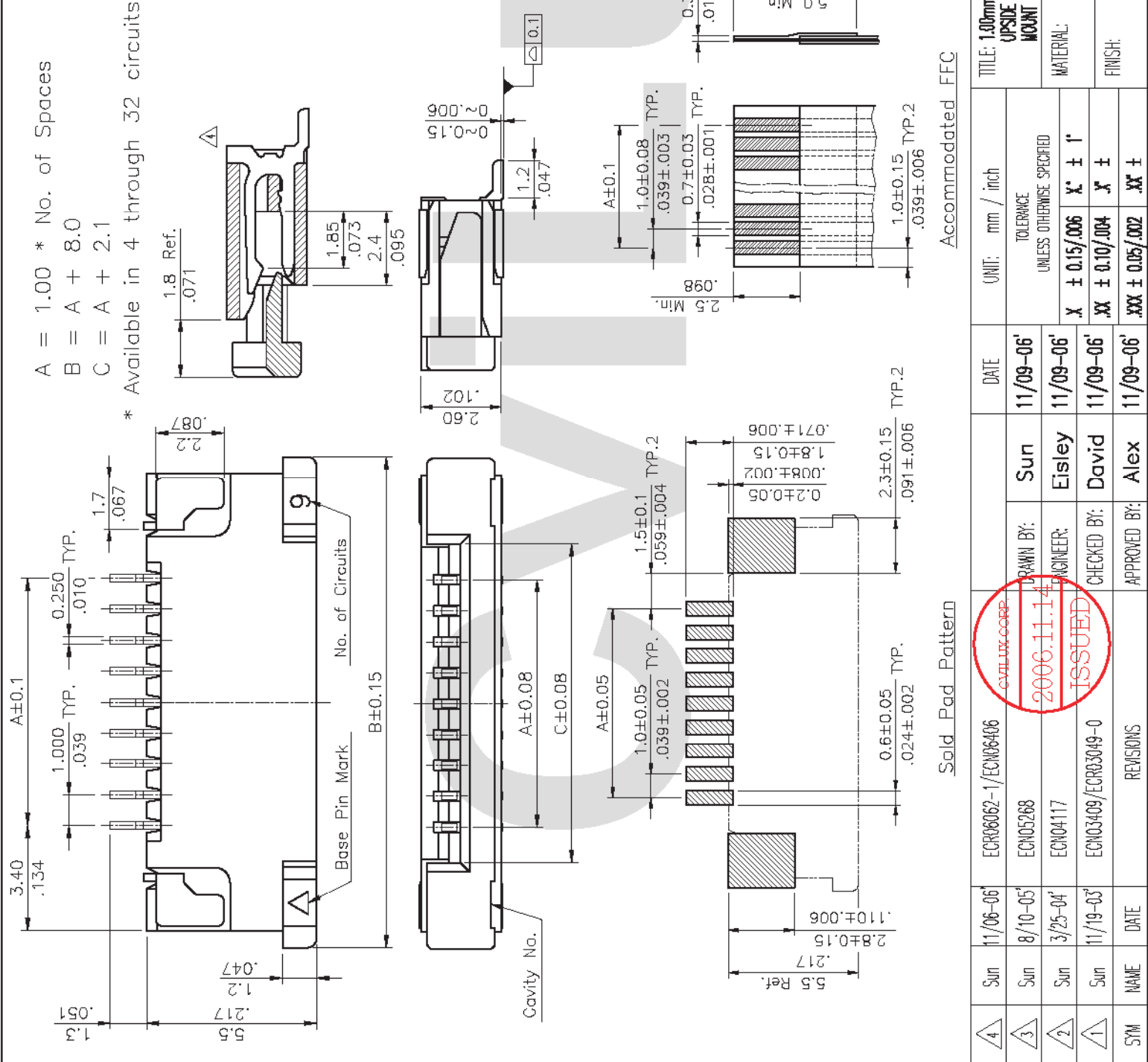
Ordering Code

CF07 \*\* \* U 0 \* 0  
 ① ② ③ ④ ⑤ ⑥ ⑦

- ① Series No.
- ② No. of Circuits
- ③ Plating code:  
 1 = Tin plated over Nickel  
 2 = Gold flash plated over Nickel
- ④ Contact style: U = Upside Contact
- ⑤ Color: 0 = Nature
- ⑥ Packing options: R = Tape & Reel  
 T = Tube Packing
- ⑦ Other options: 0 = Standard

- A = 1.00 \* No. of Spaces
- B = A + 8.0
- C = A + 2.1

\* Available in 4 through 32 circuits



Accommodated FFC

Sold Pad Pattern

RoHS Compliant

④	Sun	11/06-06	ECR06062-1/ECN06406	DATE	UNIT: mm / inch	TITLE: 1.00mm(.039") ZIF FFC/FFC UPSIDE CONTACT SURFACE MOUNT CONNECTOR
③	Sun	8/10-05	ECN05288	11/09-06	TOLENANCE UNLESS OTHERWISE SPECIFIED	MATERIAL:
②	Sun	3/25-04	ECN04117	11/09-06	X ± 0.15/0.06 X' ± 1'	FINISH:
①	Sun	11/19-03	ECN03409/ECR03049-0	11/09-06	.XX ± 0.10/0.04 X' ±	
SYM	NAME	DATE	REVISIONS	11/09-06	.XX ± 0.05/0.02 .XX' ±	

CVILUX CORP.  
 2006.11.14  
 ISSUED

瀚菱股份有限公司  
 CviLux Corporation

DRAWING NO. **CF0702SK** PART NO. **CF07\*\*\*U0\*0**

SCALE 5 / 1 SHEET 1 OF 1