

Poles	D
02~12	8.7
16,18	14.5

Assembled Dimension

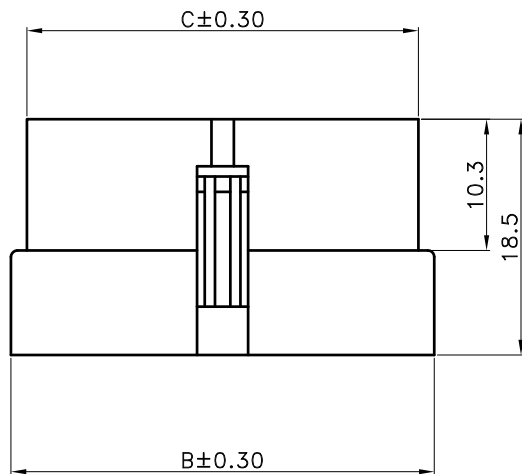
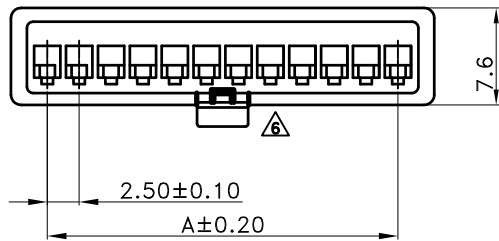
SPECIFICATIONS

- Current Rating : 3A AC/DC
- Withstanding Voltage : 1,500V AC/minute
- Insulation Resistance : 500MΩ min.
- Temperature Range : -25°C to +85°C
- Contact Resistance : 10mΩ max.

RECEPTACLE

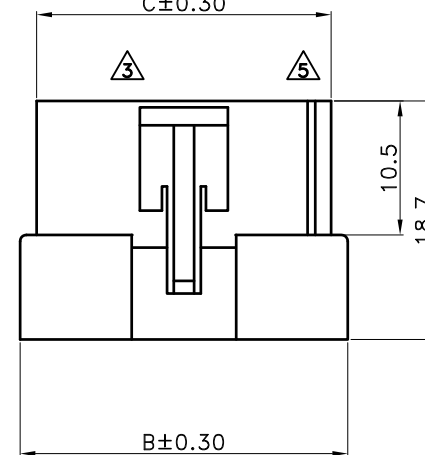
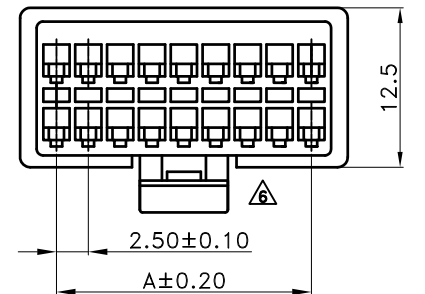
- Part No. : JS-6504-XX X
- ① Poles : ① ②
 1. Single-Row : 02~12
 2. Dual-Row : 16,18
- ② Base Color : Blank : Black
W : White
- Material : Nylon 66 UL94V-0
- Q'ty/Packing :
 1. 1,000 Pcs / 1 Bag(02~03 Circuit)
 2. 500 Pcs / 1 Bag(04~12,16,18 Circuit)

Single-Row



Poles	Dimensions		
	A	B	C
02	—	8.1	5.5
03	5.00	10.7	8.0
04	7.50	13.2	10.6
05	10.00	15.7	13.1
06	12.50	18.2	15.6
07	15.00	20.7	18.1
08	17.50	23.2	20.7
09	20.00	25.7	23.1
10	22.50	28.4	25.6
11	25.00	30.7	28.1
12	27.50	33.2	30.7

Dual-Row



Poles	Dimensions		
	A	B	C
16	17.50	23.2	20.6
18	20.00	25.7	23.1



喬訊電子工業股份有限公司

**CHYAO SHIUNN
ELECTRONIC INDUSTRIAL LTD.**

PART NO JS-6504-XX

2.50mm Wire to Wire Connector

APPROVED BY	SCALE	UNIT	TOLERANCE	LTR	REVISION RECORD	NAME	DATE	LTR	REVISION RECORD	NAME	DATE
張育瑞		mm	.0 ±0.30		圖面遺失	余秀麗	2005/05/15				
CHECKED BY	PROJ	VER NO.	.00 ±0.20		圖面合併	黃科源	2008/04/30				
周慈雲		a7	.000 ±0.10		圖面與實物不符	王誠賢	2010/05/12				
DRAWN BY	DATE	SIZE	ANGLE								
吳弘文	2015/01/28	A4	0°	±1°		修改產品尺寸	王誠賢	2011/08/19			
			0°	±		修正產品外觀	王誠賢	2011/12/02			
			SHEET	1/1		修正產品外觀 增加顏色選項	吳弘文	2013/12/10 2015/01/28			

CUSTOMER

Conforms to The RoHS Instruction