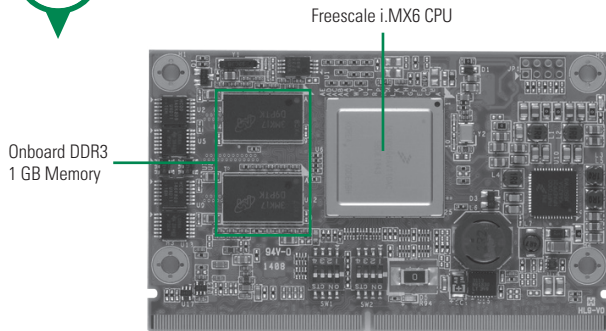


SCM120

Freescale i.MX6 SMARC SoM

NEW



System

Processor	Freescale i.MX6 Series SoC with Quad/DualLite ARM Cortex™-A9 CPU 800 MHz
System Memory	On-board DDR3 1GB
OS	Linux kernel 3.0.35, Android 4.3
Storage	eMMC flash 4 GB, SDIO interface, SATA interface (Only Quad Support)
RTC	Battery on the Baseboard is required
Power Requirement	+3V~+5.25V
Size	82 x 50 mm
Board Thickness	1.2 mm ± 0.1mm
Operating Temperature	-40°C ~ +85°C (Industrial)
Operation Humidity	10% ~ 95%, non-condensing

I/O

Graphics	1 24-bit TTL Signal 1 Dual channel 24-bit LVDS 1 HDMI 1080P
Ethernet	1 10/100/1000 Mbps Ethernet
Audio	Mic-in/Headphone
COM	4 UARTs with TX/RX/RTS/CTS 1 Console port
USB	1 OTG client and 1 USB 2.0
I ² C	4
SPI	2
CAN	2 ports
GPIO	8
PCIe	1 PCIe x1
Camera	1 MIPI v1.0, 2x Lane 1 PCAM 8bit

Features

- Ultra Low Power Consumption Cortex™-A9
- High flexibility SMARC v1.0 Compliant Design
- 2 CAN 2.0B
- 24-bit TTL Signal
- LVDS/HDMI 1080P
- 10/100/1000 Mbps Ethernet
- Linux3.0.35/Android4.3
- Audio

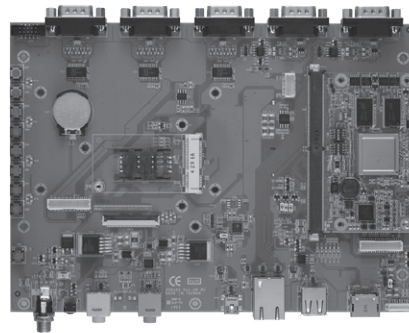
Ordering Information

Standard

SCM120-DualLite-I	SCM120 with Freescale iMX6 DualLite 800 MHz (Industrial) SoC, 1 GB Memory, 4 GB eMMC, 10/100/1000 Mbps Ethernet, Audio, CAN
SCM120-Quad-I	SCM120 with Freescale iMX6 Quad 800MHz (Industrial) SoC, 1 GB Memory, 4 GB eMMC, 10/100/1000 Mbps Ethernet, Audio, CAN,SATA

Optional

SCM120-120-EVK DualLite-I	Evaluation Kit Board
SCM120-120-EVK Quad-I	Evaluation Kit Board
P/N: 5078S120100E	SCM120 Heatspread (-40 °C ~70 °C)
P/N: 5078Q120200E	Heatsink (-40 °C ~75 °C)



▲ SCM120-120-EVK