

\*Change new drawing frame in Blue Color since 2009/07/01 , to comply with Company CIS Policy.

## Revisions

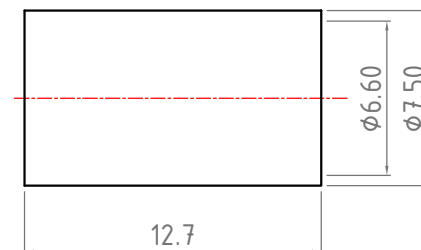
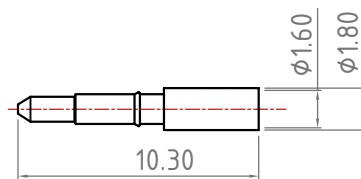
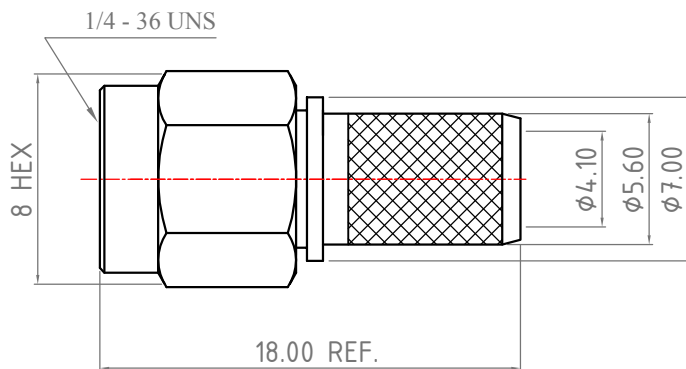
Note: Revisions B; B-1; B-2..... On Behalf of Official Drawing.  
Revisions 1; 2; 3; 4..... On Behalf of Experiment's Drawing.

ISS	Symbol	Description	Date
B		CHE for New Drawing Frame & New PN System	2006/07/10

Outline Drawing

### Notes :

- Any Electrical, Mechanical or Environmental Test Per MIL-C-39012 Should be Spotlighted, as We May Not Have All Testing Equipment to Cover All of It.
- Single Crimp: Recommended Dimensions Provided for Ferrule.  
Dual Crimp: Recommended Dimensions Provided for Ferrule And Center Pin.  
Please Advise Single/Dual in Advance to Avoid Any Inconvenience.
- All Metal Materials Are in Compliance with RoHS 2 Directive 2011/65/EU Annex III Section 6 Paragraph.
- Recommended Crimped Hand Tool : for Ferrule P/N - **HT-801G**



### Electrical :

Impedance : 50 ohm  
 Frequency Range : 0~12.4 GHz .  
 Voltage Rating : 500 V rms (depending on cable)  
 Insulator Resistance :  $\geq 5 \text{ G}\Omega$   
 Dielectric Withstanding Voltage : 1000 V rms .  
 Contact Resistance : Center Contact  $\leq 3 \text{ m}\Omega$ .  
 Outer Contact  $\leq 2.5 \text{ m}\Omega$  .  
 VSWR :  $\leq 1.2 + .03f$  (GHz)

### Mechanical :

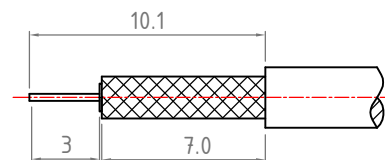
Mating : 1/4-36 UNS Screw-on Coupling.  
 Recommended Mating Torque : 7.1~9.7 lbs  
 Coupling Nut Retention Force :  $\geq 60.7$  lbs

### Environmental :

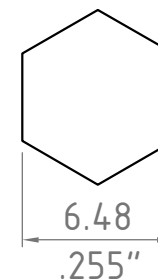
Temperature Range : -65°C to 165°C  
 Corrosion(Salt Spray) : MIL-STD-202, Method 101, Cond. B  
 Thermal Shock : MIL-STD-202, Method 107, Cond. B  
 Mechanical : MIL-STD-202, Method 213, Cond. I  
 Vibration : MIL-STD-202, Method 204, Cond. D

### Finish : [Unit of Plating Thickness Is in Micro Inch (μ)]

- Nickel Plating Thickness : 80 μ"
- Gold Plating Thickness : 2 μ" MAX.



Recommended Cable Stripping Dimensions



Recommended Crimping Dimensions for Ferrule

ITEM	Description	Material	Finish	Part Number	QTY
5	Ferrule	Brass	Finish 1/2		
4	Pin	Brass	Finish 1/2		
3	Insulator	PTFE	None		
2	Body	Brass	Finish 1/2		
1	Shell	Brass	Finish 1/2		

Scale	Abbr.	Date	Rev.
NTS	ST	2014/06/12	B
Tolerances :		Proprietary Note	
.X ±0.2		This document contains information proprietary to S-Conn, which is either copyrighted, or patent applied for, and / or protected by trade secret laws.	
.XX ±0.1		This document or parts thereof, may not be used, disclosed or reproduced in any form by any method, or for any purpose, without the written permission of S-Conn, Taiwan	
.XXX±0.05			
Angular :			
.X ±1°			
Drawn	Checked	Approved	
Kevin	Mark	H. Sun	
2014/06/12	2014/06/12	2014/06/12	



DWG.NO.	CUSTOMER P/N:	TITLE
S101F0G01-BB		SMA Straight Crimp Plug for 8X,LMR240,B7808A,H155 Cable
<b>S-Conn Enterprise Co., Ltd.</b>		

