

# Revisions

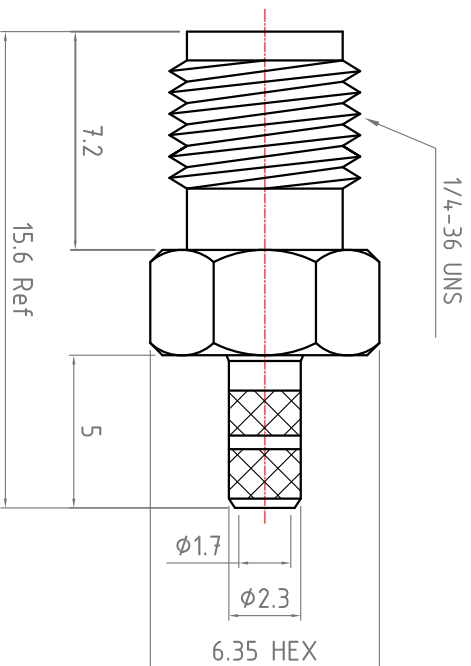
Revisions B; B-1; B-2,.... On behalf of official Drawing  
Revisions 1; 2; 3; 4,..... On behalf of experiments Drawing

ISS	Symbol	Description	Date
B		CHE for New Drawing Frame & New PN System	2006/07/11

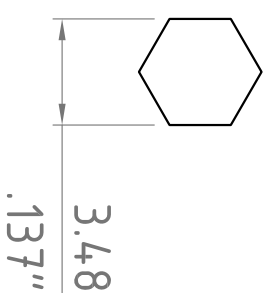
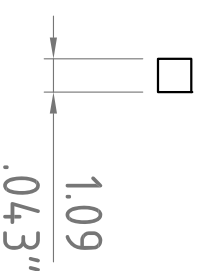
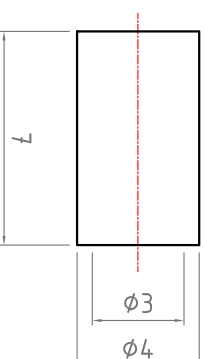
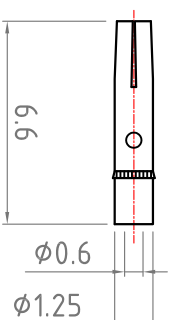
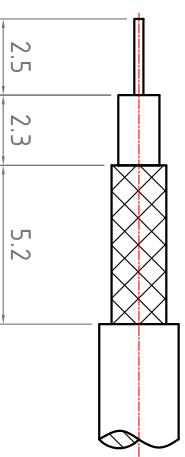
\*Change new drawing frame in Blue Color since 2009/07/01 , to comply with Company CIS Policy.

## Note :

1. Single Crimp: Providing Recommended Dimensions for Ferrule, Dual Crimp: Providing Recommended Dimensions for Ferrule and Center Pin. Please Advise Single/Dual in Advance to Avoid any Inconvenience.
2. All Metal Materials are in Compliance with RoHS 2 Directive 2011/65/EU Annex III Section 6 Paragraph.
3. Recommended Crimped Hand Tool : for Center Pin - **HT-301V** for Ferrule P/N - **HT-801V**



## Recommended Cable Stripping Dimensions



## Recommended Crimping Dimensions for Center Pin

## Recommended Crimping Dimensions for Ferrule

ITEM	Description	Material	Finish	Part Number	QTY
4	Ferrule	Brass	Gold		
3	Pin	Brass	3u"Gold		
2	Insulator	PTFE	None		
1	Body	Brass	Gold		

Scale	Abbr.	Date	Rev.
NTS	ST	2013/02/21	B

Drawn	Checked	Approved
<i>Mark</i>	<i>Ryan</i>	<i>Y. Yun</i>
2019/02/21	2019/02/21	2019/02/21

**Proprietary Note**  
This document contains information proprietary to S-Conn, which is either copyrighted or patent applied for, and / or produced by trade secret laws.  
This document or parts thereof, may not be used, disclosed or reproduced in any form by any means, or for any purpose, without the written permission of S-Conn, Taiwan.  
Customer P/N:

DWG. NO. S213AA0G22-M  
TITLE SMA Straight Dual Crimp Jack  
RG174,188,316;B7805A;URM95 Cable

