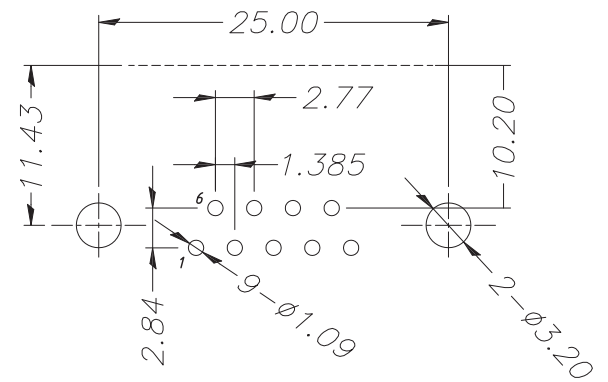
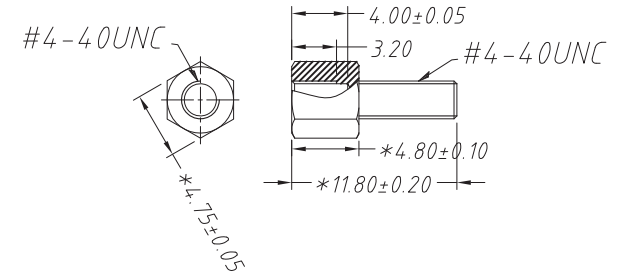


**MATERIALS AND FINISH**  
 SHELL : STEEL MATERIAL, NICKEL FINISH  
 INSULATOR : PBT THERMOPLASTIC, 30% GLASS  
 FILLED, UL 94V-0 RATED, BLACK COLOR  
 CONTACT MATERIAL : BRASS  
 CONTACT FINISH : GOLD FLASH ON CONTACT AREA,  
 TIN PLATED ON SOLDER TAIL ,UNDER PLATED NICKEL  
 GROUNDING BRACKET : STEEL MATERIAL, TIN FINISH  
 RIVETED INSERT : BRASS MATERIAL , NICKEL FINISH

**ELECTRICAL CHARACTERISTICS**  
 CONTACT RESISTANCE : 30MILLIOHMS MAX. CONTACT  
 CURRENT RATING : 5.0 AMPS  
 DIELECTRIC WITHSTANDING VOLTAGE : 500 VAC MIN.  
 INSULATION RESISTANCE : 1000MEGOHMS MIN.



P.C.B LAYOUT

UNLESS TOLERANCES			ULO ELECTRONICS CO., LTD		
X.X ± 0.38	X.X* ± 3°				
X.XX ± 0.25	X.XX* ± 1°				
X.XXX ± 0.05	X.XXX* ± 0.5°				
UNIT mm	SHEET 1/1	REV A0			
DRAW CHENGANG	CHECK	APPROVE			
2011-7-14			PART NO.		

ULO-DB425A-09MNCKT74