

# PCM-7250+

## PC/104-Plus 8-CH Relay & Isolated Digital Input Module

### Features

- PC/104 Plus module
- 8 Relay actuator outputs
- 8 Photo isolated digital inputs
- LED indicators show activated relays
- On-board relay driving circuits
- Jumper selectable for AC/DC isolated input
- On-board digital input signal conditioning circuits

### Overview

The PC/104-Plus specification establishes a standard for the use of a high speed PCI bus in embedded applications. Incorporating the PCI bus within the industry proven PC/104 form-factor brings many advantages to end users, including fast data transfer over the PCI bus, low cost due to PC/104's unique self-stacking bus, and high reliability due to PC/104's inherent ruggedness.

ADLINK'S PCM Plus series uses PCI bus, thus they need to work with CPU module which supports PC/104-Plus interface.

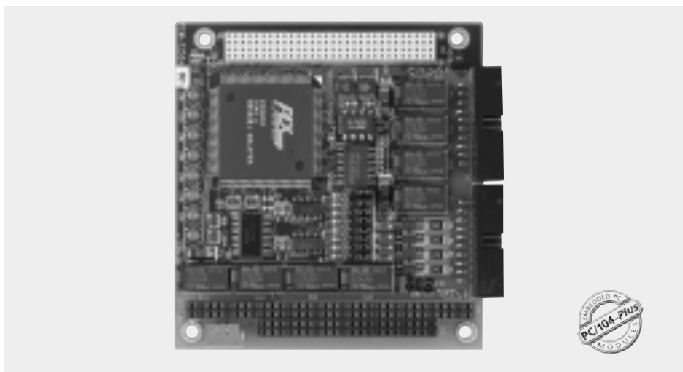
### Specifications

#### Relay Output

- Number of relays: 8
- Relay type: Single-pole, double-throw (SPDT)
- Output channels
  - Relay # 0~3 are Form C (includes normally open and close contacts)
  - Relay # 4~7 are Form A (includes normally open only)
- LED indicates each relay's ON/OFF status for monitoring
- Contact Type: 120VAC @ 0.5A or 24VDC @ 1A
- Contact resistance: Bifurcated
- Relay ON/OFF time: 8 ms typical
- Coil voltage: +5V @ 33mA for each relay

#### Isolated Inputs

- Number of channels: 8
- Photo isolators: PC3H4
- Input signal type: AC or DC
  - AC: don't care polarity
  - DC: with polarity
- Input voltage range: 0 ~ 24VDC or 24VAC 50 ~ 1,000Hz
- Input Logic Level
  - Logic Low: 0~2.4V
  - Logic High: 3~24V



PCM-7250+ Module

- Input filters: RC low pass filter
- Input impedance: 2.4 KΩ
- Isolation voltage: 2,500 V rms channel-to-system power/ground
- Response time
  - 20 µsec without AC Filter
  - 2.2 ms with AC Filter

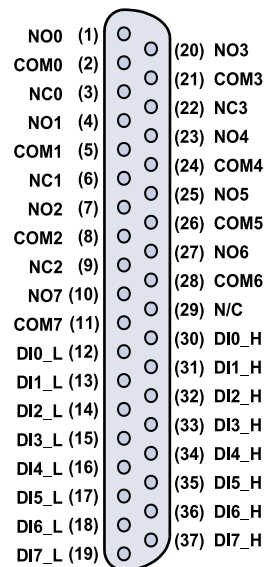
### Termination Boards Via ACL-10337 Cable

- ACLD-9137    • ACLD-9188
- DIN-37D

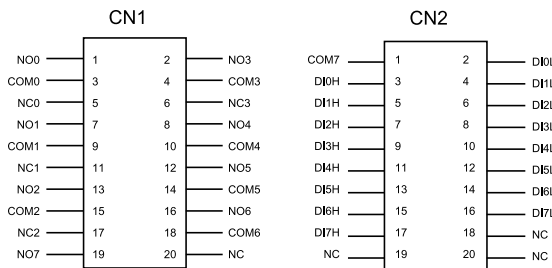
### Ordering Information

**PCM-7250+**  
PC/104-Plus 8-CH Relay & Isolated Digital Input Cards

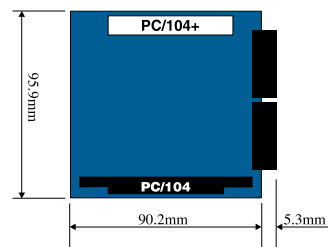
### Pin Assignment of 37-pin connector when using ACL-10337 Cable



### Pin Assignment of the 20 Pin Connector



### Dimension



PC/104-Plus Modules