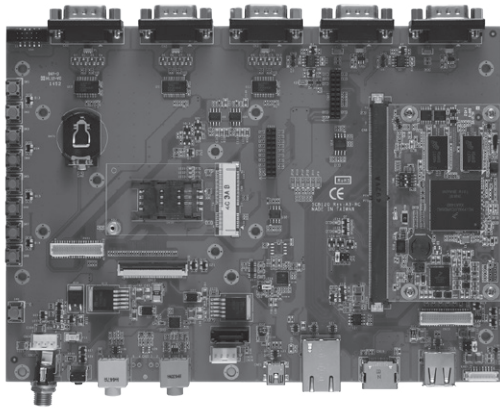


SCM120-120-EVK

Freescale i.MX6 SMARC SoM Evaluation Kit

NEW



Features

- Ultra Low power consumption Cortex™-A9
- High flexibility SMARC v1.0 compliant design
- 2 CAN 2.0B
- 24-bit TTL LCD
- LVDS/HDMI 1080P
- 10/100/1000 Mbps Ethernet
- Open GL ES2.0
- Linux3.0.35/Android4.3
- Audio

System

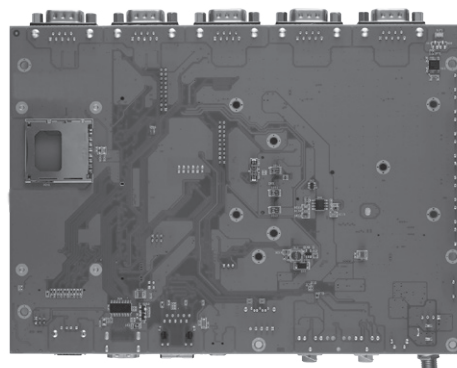
Processor	On SCM120 SoM
System Memory	On SCM120 SoM
OS	Linux kernel 3.0.35, Android 4.3
RTC	Battery on the Baseboard is required
Power Requirement	+5V ± 5%, 5A
Size	200 x140 mm
Board Thickness	1.6 mm ± 0.15mm
Operation Humidity	10% ~ 95%, non-condensing

Ordering Information

Standard	
Q7M120-120-EVK-Quad-I	Evaluation Kit Board
Q7M120-120-EVK-DualLite-I	Evaluation Kit Board
Optional	
P/N: 5078S120100E	SCM120 Heatspread (-40 °C ~70 °C)
P/N: 5078Q120200E	Heatsink (-40 °C ~75 °C)

I/O

Graphics	1 24-bit TTL LCD 1 HDMI 1080P 1 Dual channel 24-bit LVDS
Ethernet	1 RJ-45 for 10/100/1000 Mbps
Audio	MIC-in
COM	4 UARTs with TX/RX/RTS/CTS
USB	2 USB 2.0 ports: 1 OTG client and 1 Host
I2C	4 I2C Interface
CAN	2 D-Sub 9-pin male connectors for 2.0B protocol-compatible Controller Area Network (CAN) interfaces
Keypad	8 button-detect circuit
Storage	1 SD/MMC socket, 1 SATA connector SPI nor Flash
Touch	4-wire touch screen controller
Mini Card	1 Full size(with SIM)
Extension Slot and Socket	1 connector with I2C/SPI/UART
MIPI	1 Serial Cammera
PCAM	1 PCAM 8bit



▲ Rear view