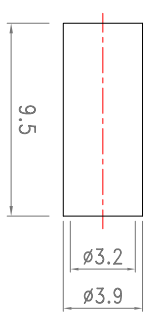
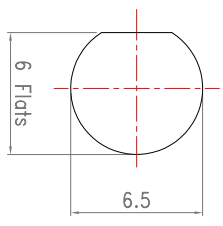
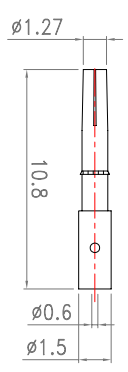
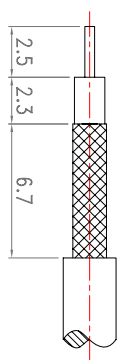
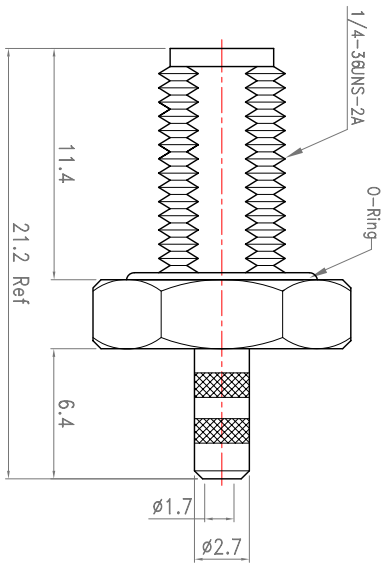
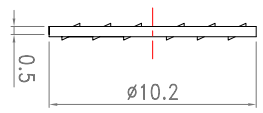
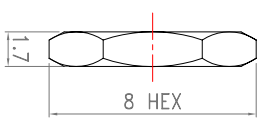
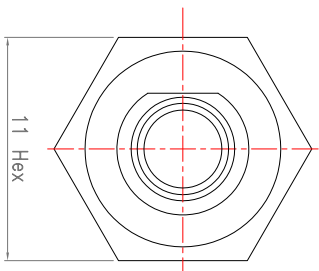


Revisions			
ISS	Symbol	Description	Date
B		CHG for New Drawing Frame & New P/N System	2006/07/10



Recommended Stripping Dim's

Recommended Mounting Hole

ITEM	Description	Material	Finish	Part Number	QTY
1	Body	Brass	Gold		
2	Insulator	PTFE	None		
3	Pin	BeCu	30u" Gold		
4	O-Ring	Si. Rubber	Orange		
5	Washer	Brass	Gold		
6	Nut	Brass	Gold		

Scale	Abbr.	Date	Rev.
NTS	ST	2006.07.14	B

Proprietary Note
 This document contains information proprietary to S-Comm, which is either copyrighted, or patent applied for, and / or protected by trade secret laws.
 This document or parts thereof, may not be used, disclosed or reproduced in any form by any method, or for any purpose, without the written permission of S-Comm, Taiwan.
 Customer P/N: Nil

DWG.NO.
S212L0G29-M-5

TITLE.
SMA Bulkhead Crimp Jack
With O-Ring for RG174

ROHS COMPLIANCE

Tolerances:	Drawn	Checked	Approved
.X ±0.5	<i>g. g</i>	<i>Ryan</i>	<i>g. Jun</i>
.XX ±0.3			
.XXX ±0.2			

ISO 9001 Certified

S-Comm Enterprise Co., Ltd