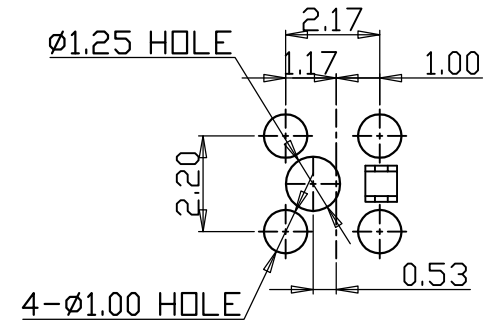


CIRCUIT DIAGRAM

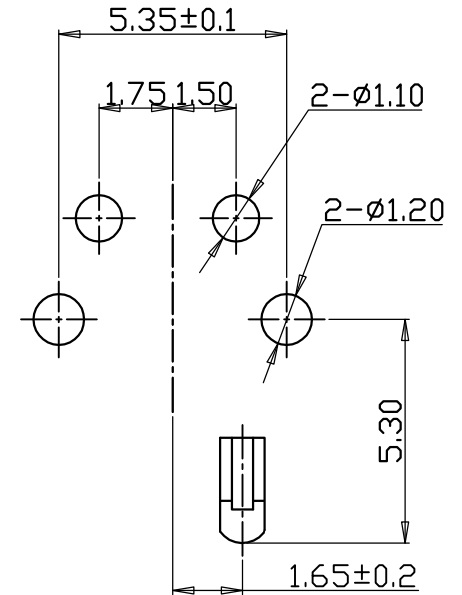
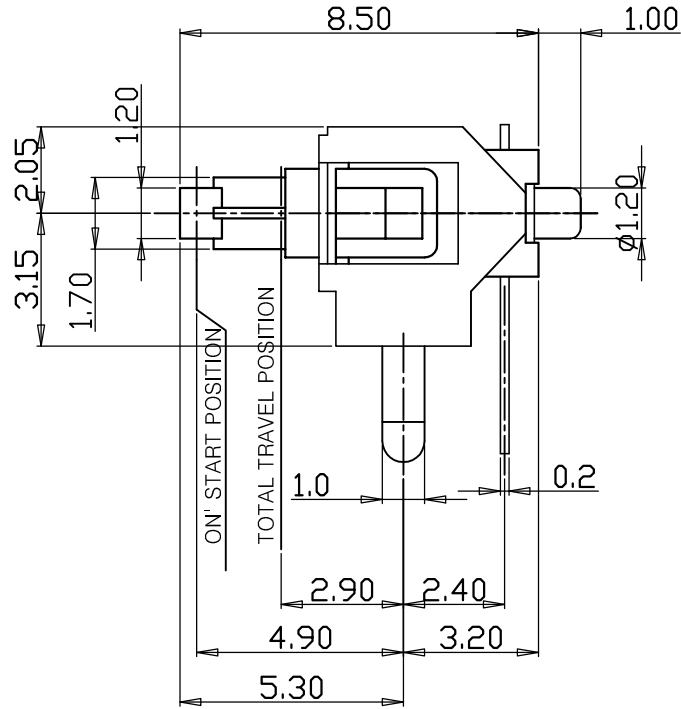
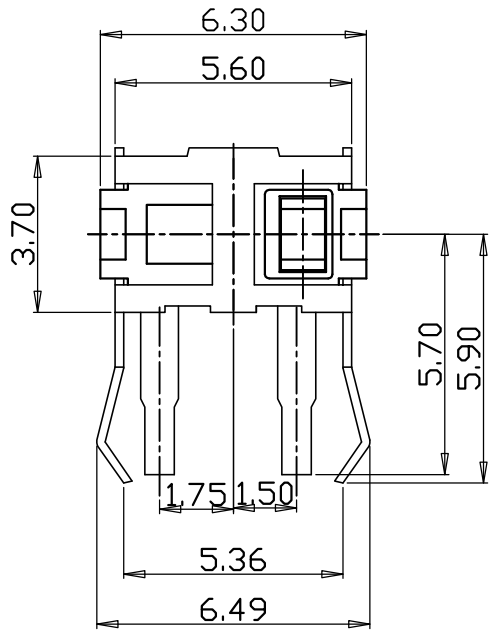


PCB PATTERN

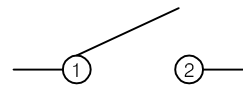
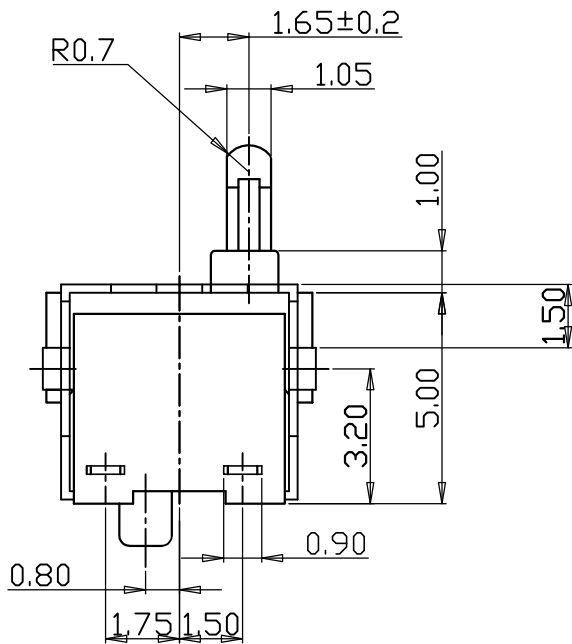
SPECIFICATION

1. RATINGS : 0.1A 30V DC
2. CIRCUIT : 1C-1P
3. OPERATING FORCE : 40gf MAX
4. CONTACT RESISTANCE : 1Ω MAX
5. LIFE : 50,000 CYCLES MIN

No.	DESCRIPTIONS	MATERIAL	FINISH/COLOR	Q'TY	REMARK
△		TRIGON- OMETRY	UNIT	SCALE	DETECTOR SWITCH
△		APPD	CHKD	DSGD	
△					
△					
△					
NO	07.09.06	CORRECTION			MODEL IND-1120B



PCB PATTERN



CIRCUIT DIAGRAM

SPECIFICATION

1. RATINGS : 0.1A 30V DC
2. CIRCUIT : 1C-1P
3. OPERATING FORCE : 40gf MAX
4. CONTACT RESISTANCE : 1Ω MAX
5. LIFE : 50,000 CYCLES MIN

No.	DESCRIPTIONS	MATERIAL			FINISH/COLOR	Q'TY	REMARK
△		TRIGON-	UNIT	SCALE	DETECTOR SWITCH		
△		OMETRY					
△		APPD	CHKD	DSGD			
△							
△							
NO	07.09.06	CORRECTION				MODEL	IND-1120VB

1. OPERATING TEMPERATURE RANGE

-10 to + 60°C

2. RATINGS (max.) (Resistive load)

0.3A 6V DC

3. ELECTRICAL PERFORMANCE

- 3.1 Initial Contact Resistance 100mΩ max.
3.2 Insulation Resistance 100MΩ min. 250V DC
3.3 Voltage Proof 100V AC for 1 min.

4. MECHANICAL PERFORMANCE

- 4.1 Operating Force Shall be in accordance with individual specifications.
4.2 Robustness of Terminal 5N { 510gf } for 1 min.
4.3 Robustness of Actuator 10N { 1.02Kgf }
4.4 Vibration 10 to 55Hz, Total amplitude 1.5mm 3 directions for 2h each
4.5 Solderability 230 ± 5°C, 3 ± 0.5s
4.6 Resistance to Soldering Heat
4.6.1 Manual Soldering 300 ± 10°C, 3₀⁺¹ s
4.6.2 Dip Soldering 260± 5°C, 5 ± 1s
4.6.3 Reflow Soldering —

5. DURABILITY

- 5.1 Operating Life without Load 50,000 cycles 200mΩ max.
5.2 Operating Life with Load (0.3A 6V DC) 50,000 cycles 300mΩ max.

6. ENVIRONMENTAL PERFORMANCE

- 6.1 Cold -20 ± 2°C for 96h
6.2 Dry Heat 85 ± 2 °C for 96h
6.3 Damp Heat 40 ± 2 °C, 90 to 95% RH for 96h

DATE	2003	DESIGNED	CHECKED	APPROVED	PAGE
S/W TYPE	DETECTOR SWITCH				1 / 1
MODEL NO.	IND-1120				
DOCUMENT NO.		/ /	/ /	/ /	