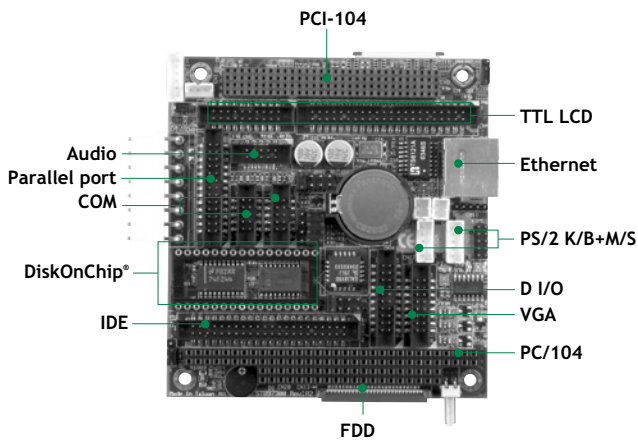


# STB97300

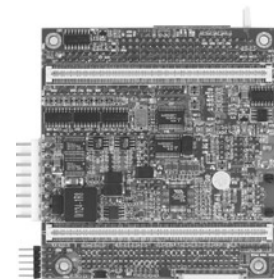
PC/104 Form Factor STX Baseboard with Multiple I/O Features



1 F.E.  
LVDS/VGA/TTL  
RS-232/422/485  
3 PCI  
PCI-104  
DiskOnChip®

## Features

- VGA and LCD supported
- 1 10/100Mbps Ethernet
- AC'97 Audio
- DiskOnChip®
- PC/104 and PCI-104 expansion



▲ Rear view

## System

CPU	STX SoM
SSD	DiskOnChip®
Watchdog Timer	0.5-1600 sec with 64 levels; system reset or NMI
Expansion Interface	1 x PC/104 and PCI104 1 x PCI104 for 32-bit PCI 1 x PC/104 for 8/16-bit ISA
Battery	Lithium 3V/220 mAh
Size	96 x 90 mm
Board Thickness	1.6 mm
Temperature	0° C ~ +60° C (32° F ~ 140° F), operation
Relative Humidity	10% ~ 95% relative humidity, non-condensing

## I/O

MIO	1 x IDE; PATA-100 1 x FDD 1 x PS/2 keyboard 1 x PS/2 mouse 1 x RS-232 (COM 1) 1 x RS-232/422/485 (COM 2) 1 x LPT; with SPP/EPP/ECP supported 1 x IrDA
SATA	N/A
Hardware Monitoring	Provided by CPU module
Ethernet	1 RJ-45 for 10/100Mbps
Audio	AC'97 codec audio as Mic-in/Line-in/Speaker-out with VIA VT1612A
USB	2 x USB 1.1a
Digital I/O	8 channels IN and 8 channels OUT
Display	16-pin box-header for CRT; 44 + 20-pin box-header for TTL-level LCD

## Packing List

Standard		
Quick installation guide, user's manual/utility CD, cable		
Cable		
Part Number	Description	Qty
59408000090E	FFC 26P cable, L=290mm	1
59408000010E	FFC 26P cable, L=210mm	1
59408660010E	FFC 41P cable, L=60mm	1
59384500000E	COM + printer cable w/ bracket 2.0 pitch	1
59397300110E	USB cable w/ bracket, L=215mm	1
59384500100E	Audio cable w/ bracket 2.0 pitch 450mm	1
59381560000E	DIN 6P to 6P PS/2 K/B+M/S	1
59397300200E	K/B & M/S cable, 2 x 5, P=2.0, L=300mm	1
59382620000E	COM port cable w/ bracket, P=2.0, L=300mm	1
59397300000E	VGA cable, L=180mm	1

## Ordering Information

Standard	
STB97300VEA	STX Baseboard with VGA/LCD, 10/100Mbps, (P/N: E3973000100) and AC'97 audio
Optional	
59381550010E	USB Cable
PK8980	LCD kit for 18-bit TTL LCD with Hirose DF9-41P-1V connector
PK95000-24	LCD kit for 24-bit single channel LVDS
PK95000-48	LCD kit for 48-bit dual channel LVDS
Enclosure Option	
EM60301	Extensible MicroBox for PC/104 F.F STX baseboards