

DATASHEET

Module TYPE	SDRAM 512MB/256MB/128MB SODIMM
Module speed	PC-133
CAS Latency	CL-3
Pin	144pin
SDRAM Operating Temp	0 °C ~ 70 °C

1. Features

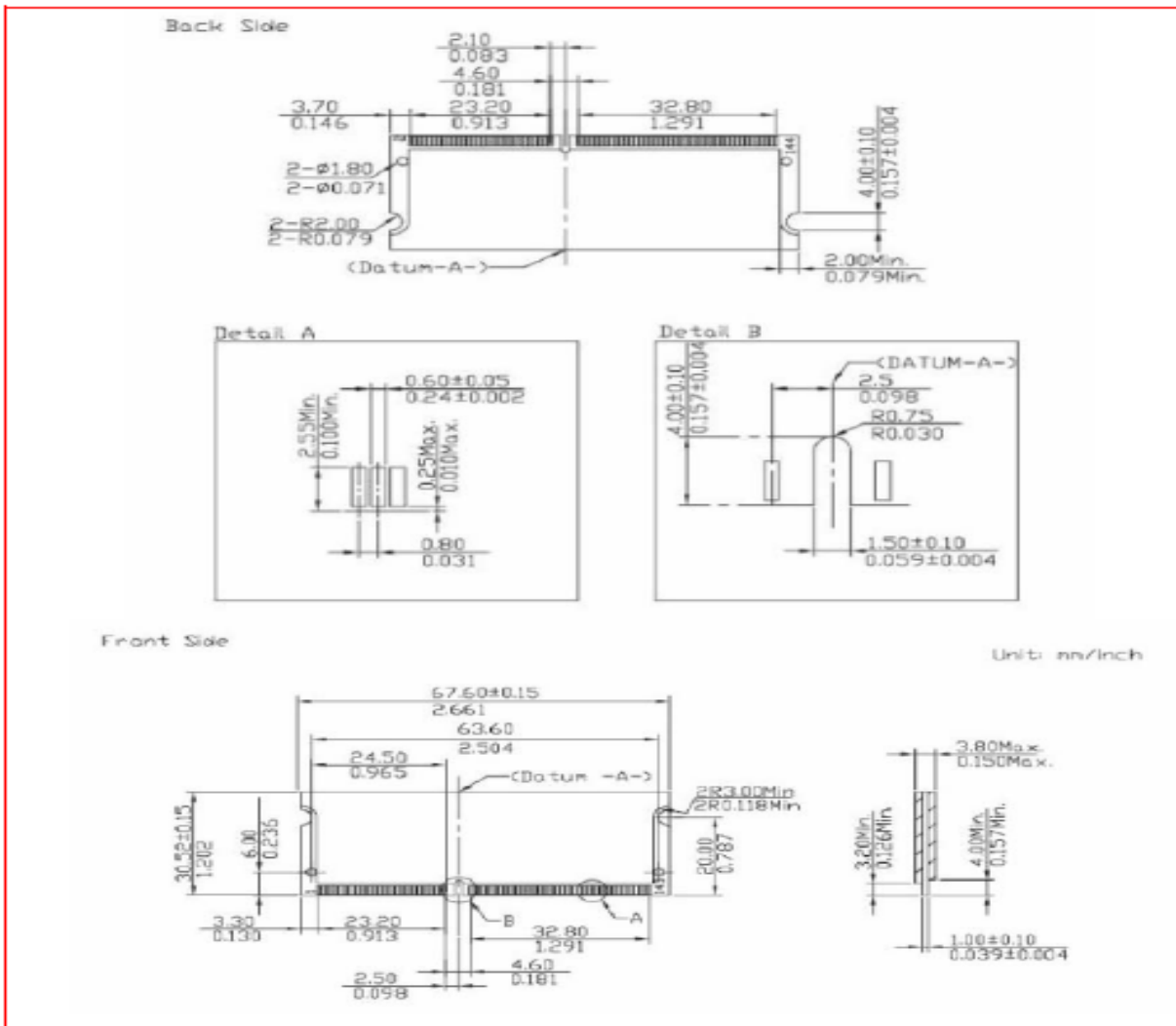
Key Parameter

Industry Nomenclature	Speed Grade	Data Rate MT/s			tRCD	tRP	tRC
		CL=2	CL=2.5	CL=3	(ns)	(ns)	(ns)
PC-133	-	100	-	133	20	20	65

- Single Pulsed RAS-interface
- Fully Synchronous to positive CLK edge
- 4 banks controlled by BA0 & BA1
- Multiple Burst Read with single write option
- Automatic and controlled precharge command
- Auto refresh (CBR) and Self-Refresh
- •Standard 144-pin Memory Module
- Intend for 133 MHz applications
- Inputs and Outputs are LVTTTL compatible
- VDD=VDDQ= 3.3 Volt \pm 0.3
-
- Serial Presence Detect with EEPROM
- SDRAM Operation Temperature (Note 1)
 - $0^{\circ}\text{C} \leq T_A \leq +70^{\circ}\text{C}$
- Programmable Device Operation:
 - Burst Type: Sequential or Interleave
 - Device CAS# Latency: 2, 3
- RoHS Compliant

Note:1. The refresh rate is requested to double when T_A Exceeds 70°C

2. PACKAGE DIMENSION



Note: Device position is only for reference.