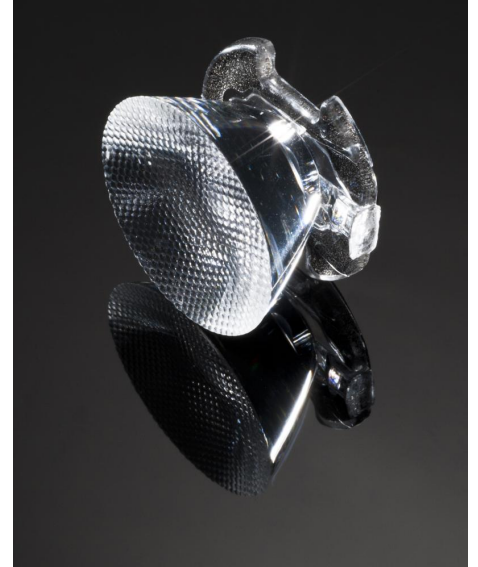


DETAILS

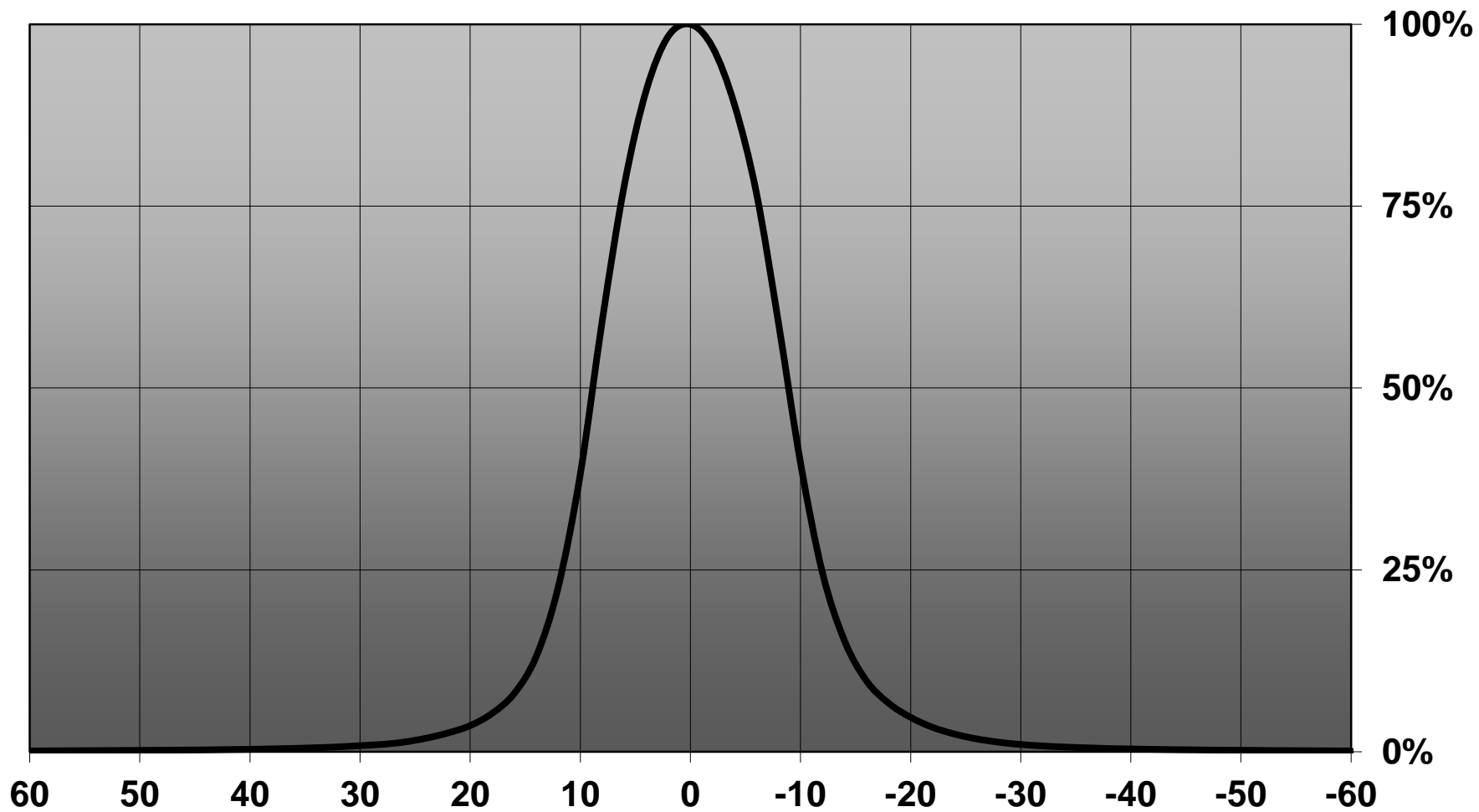
Product Number	CA11388_EMILY-M
Family	Emily
Type	Assembly
Color	clear
Diameter	26 mm
Height	15,15 mm
Style	round
Optic Material	PMMA
Holder Material	
Fastening	tape, pin
Status	production ready
ROHS Compliant	Yes
Date Updated	9/06/2016



OPTICAL PROPERTIES

LED	Viewing	Light	Effi-		Connector
	Angle	Beam	ciency	cd/lm	
XP-E	18 deg	Medium	93 %	7.900	-
XP-G	18 deg	Medium	93 %	7.200	-
XB-H	18 deg	Medium	89 %	7.600	-
LUXEON Rebel	18 deg	Medium	91 %	7.500	-
NVSxx19A	18 deg	Medium	91 %	-	-
NCSxx19A	18 deg	Medium	91 %	-	-
NCSxx19B	sim: 18	Medium	sim: 91 %	sim: 8.700	-
Oslon SSL 80	18 deg	Medium	88 %	-	-
Oslon SSL 150	20 deg	Medium	-	-	-
Oslon Square EC	18 deg	Medium	89 %	8.250	-
Z5	18 deg	Medium	-	-	-
Double Dome (GM2BB)	18 deg	Medium	-	-	-

Relative intensity of CA11388_EMILY-M_(SQ EC)



D

C

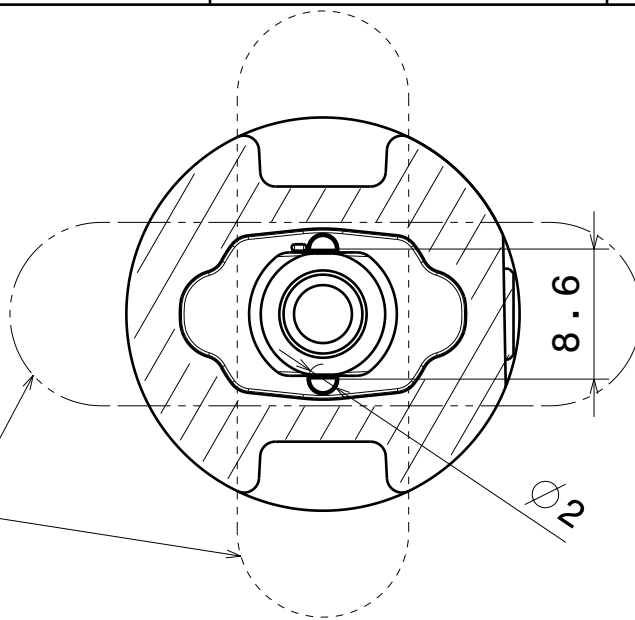
B

A

4

4

Bottom view



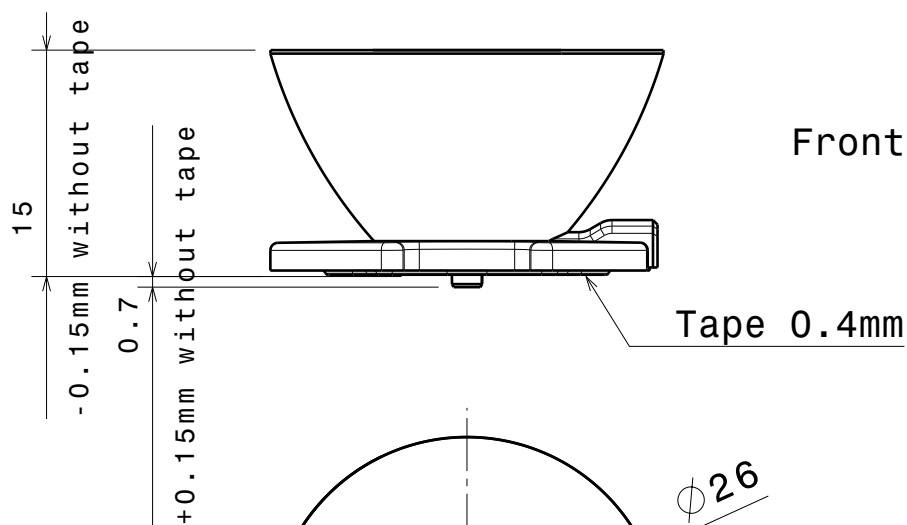
Beam direction Emily-0-90

Beam direction Emily-0

3

3

Front view

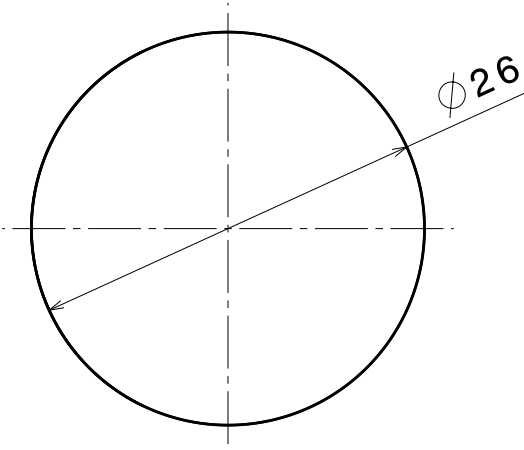


Tape 0.4mm

2

2

Top view



Materials:

Lens PMMA

Tape PU Foam with adhesive

Part no.s:

CA11387_Emily-SS

CA11388_Emily-M

CA11389_Emily-0

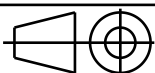
CA11390_Emily-0-90

CA11391_Emily-M2

Tolerances if not otherwise shown
 According to DIN ISO 2768-1
 Linear measures:
 up to 30mm class M, otherwise class C
 According to DIN ISO 2768-2
 Form and position: class L

LEDiL LediL Oy
 Salorankatu 10
 FIN 24240 SALO
 Finland

THIRD ANGLE PROJECTION:



DRAWING TITLE

Datasheet Emily series lens

This drawing is the property
 of LEDiL Oy. It may not be
 reproduced, copied or
 communicated without a written
 agreement with LEDiL Oy.

SIZE PART NUMBER

A4

SCALE 2:1 WEIGHT

SHEET 1/1

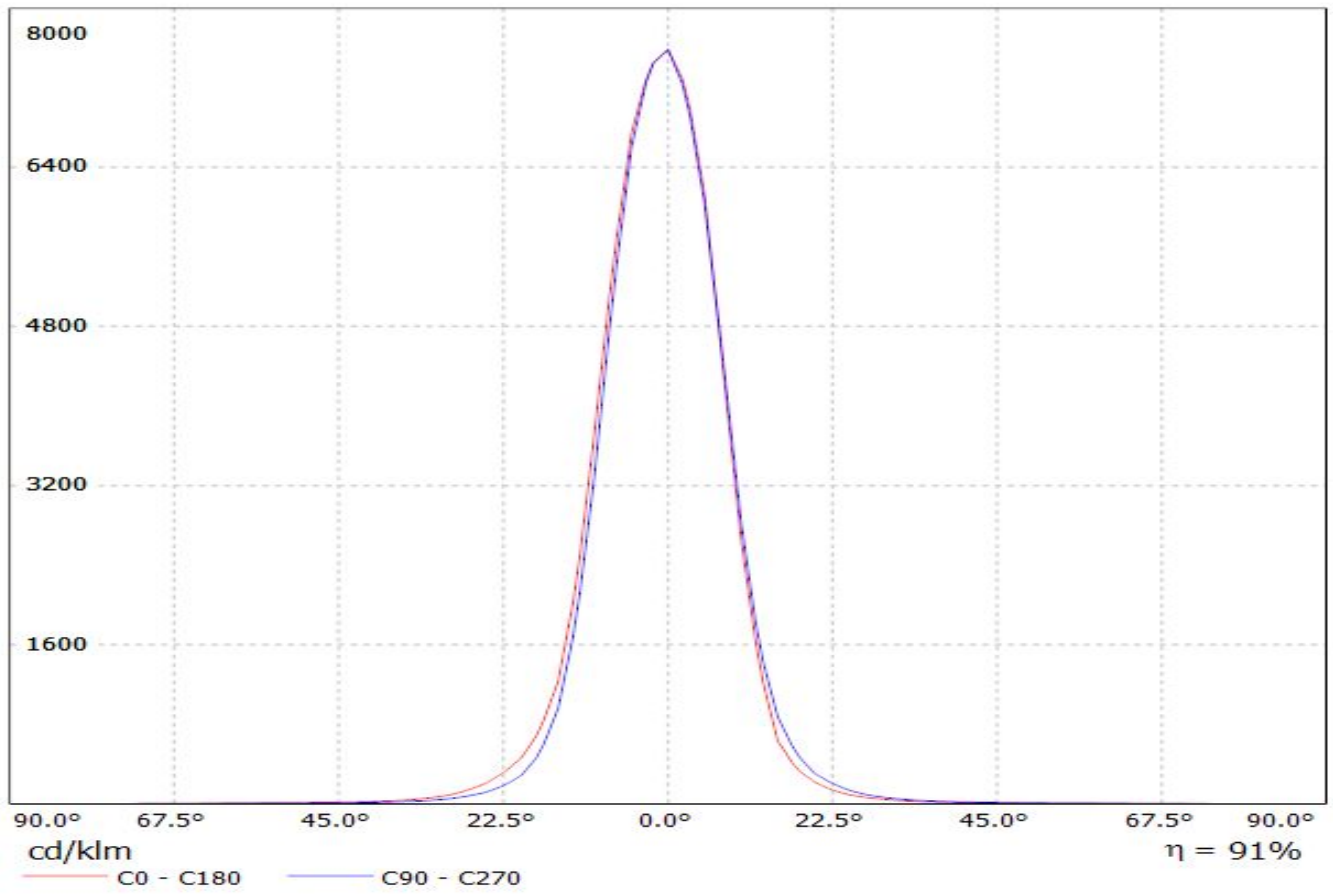
D

A

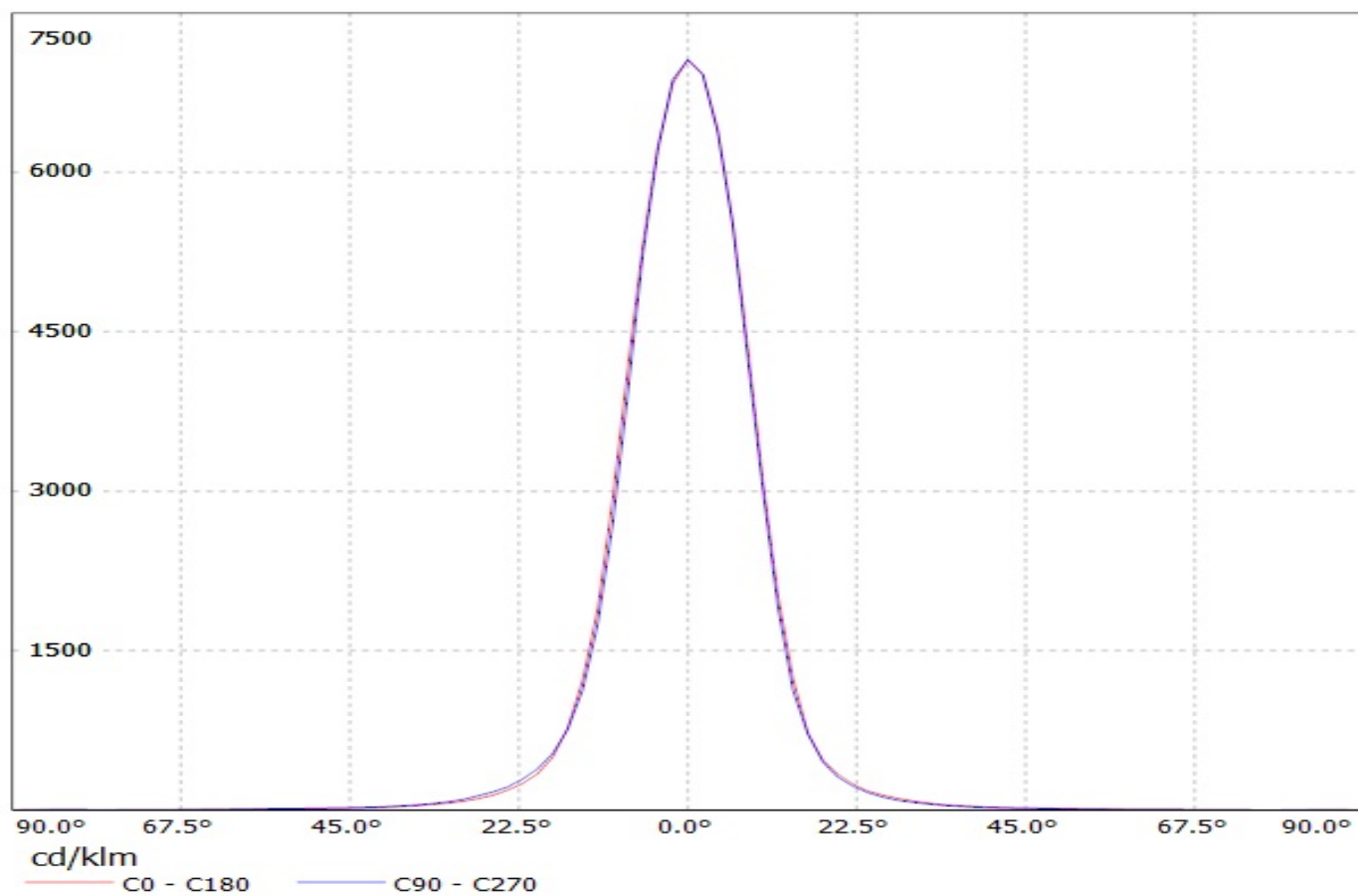
1

Luminaire: Ledil Oy CA11388_EMILY-M_(XB-H)

Lamps: 1 x Cree XB-H (XBHAWT-0-3C0-T50-0B-0001) 106lm @ 250mA CCT= P=0.73W I=250mA

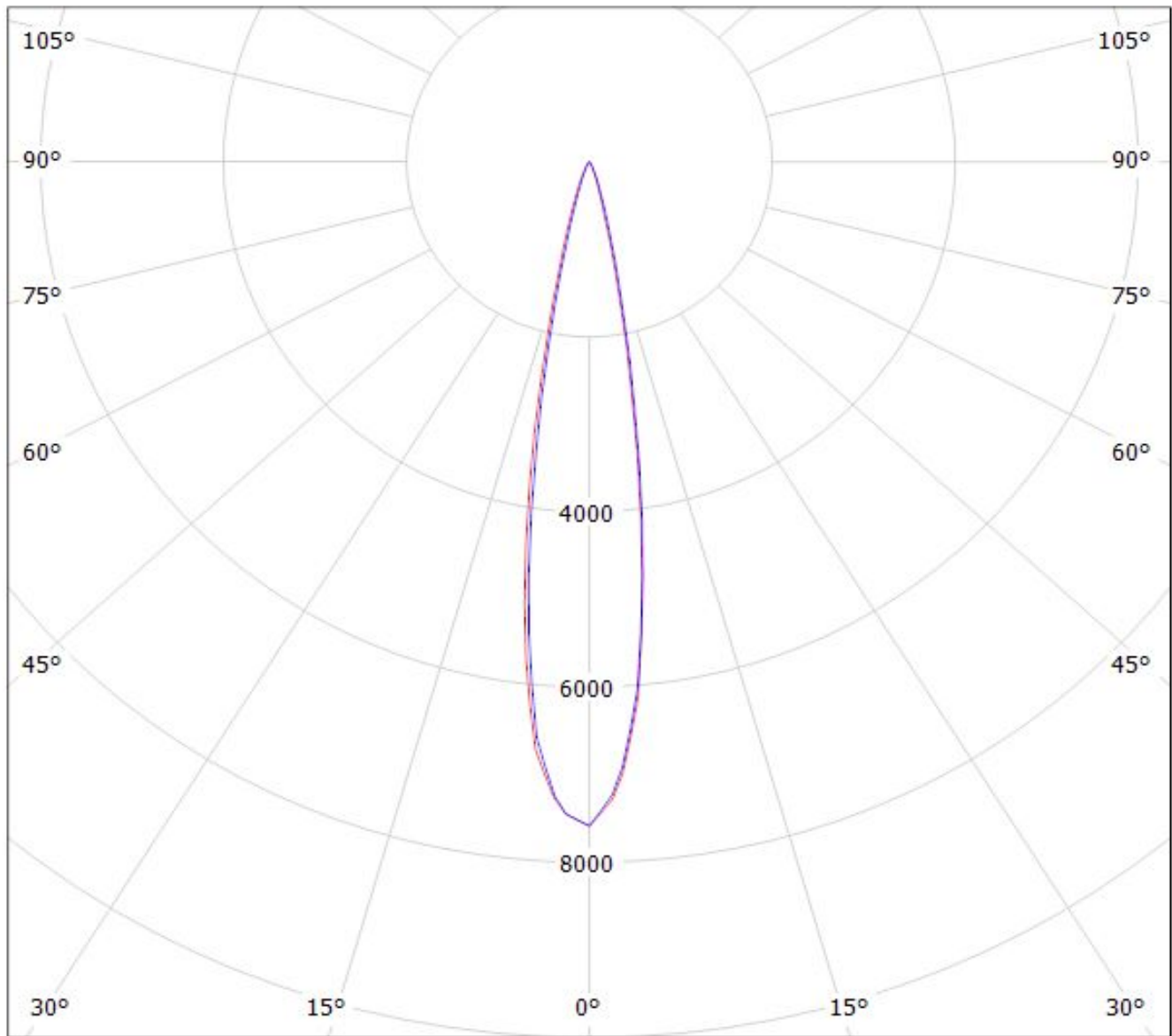


Luminaire: Ledil Oy CA11388-EMILY-M (Osram Square EC 62lm @ 250mA) Efficiency=89%
Lamps: 1 x Osram Square EC 62lm @ 250mA



Luminaire: Ledil Oy CA11388_EMILY-M_(XB-H)

Lamps: 1 x Cree XB-H (XBHAWT-0-3C0-T50-0B-0001) 106lm @ 250mA CCT= P=0.73W I=250mA



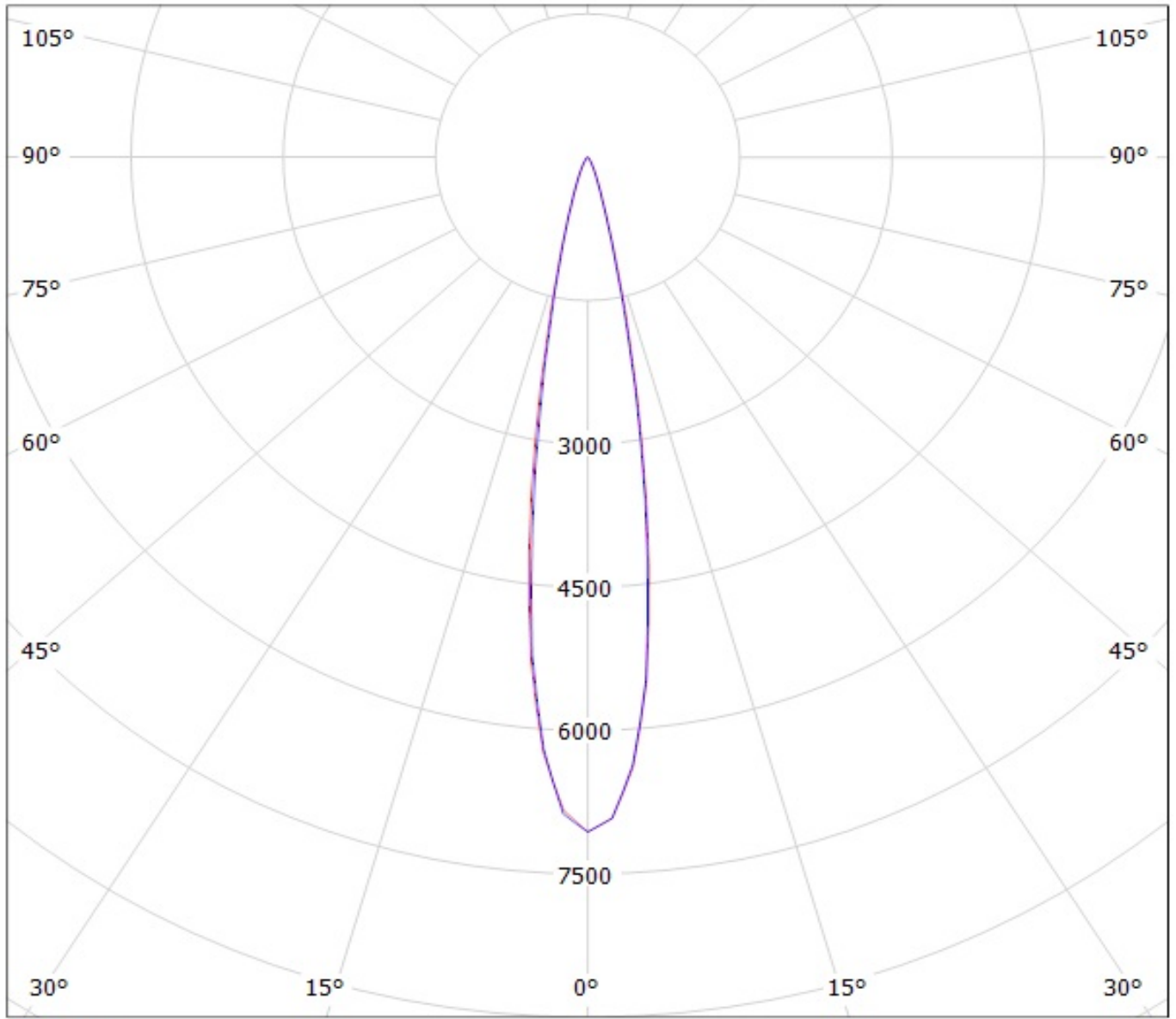
cd/klm

— C0 - C180

— C90 - C270

$\eta = 91\%$

Luminaire: Ledil Oy CA11388-EMILY-M (Osram Square EC 62lm @ 250mA) Efficiency=89%
Lamps: 1 x Osram Square EC 62lm @ 250mA



cd/klm

— C0 - C180 — C90 - C270

NOTE: The typical divergence will be changed by different color, chip size and chip position tolerance. The typical total divergence is the full angle measured where the luminous intensity is half of the peak value.