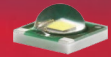


# Data Sheet

## LL01CR-FT60135L02



Xlamp XP-E



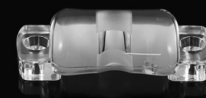
### Similar Products(Illuminance Uniformity, Symmetry)



LL01CR-OG85150L02



LL01CR-KM6090L02



LL01OS-AU60130L02

### ■ Features & Typical Applications

- High efficiency
- Optimized for uniform effect
- Roadway Lighting
- Anti-glare

### ■ Table of Contents

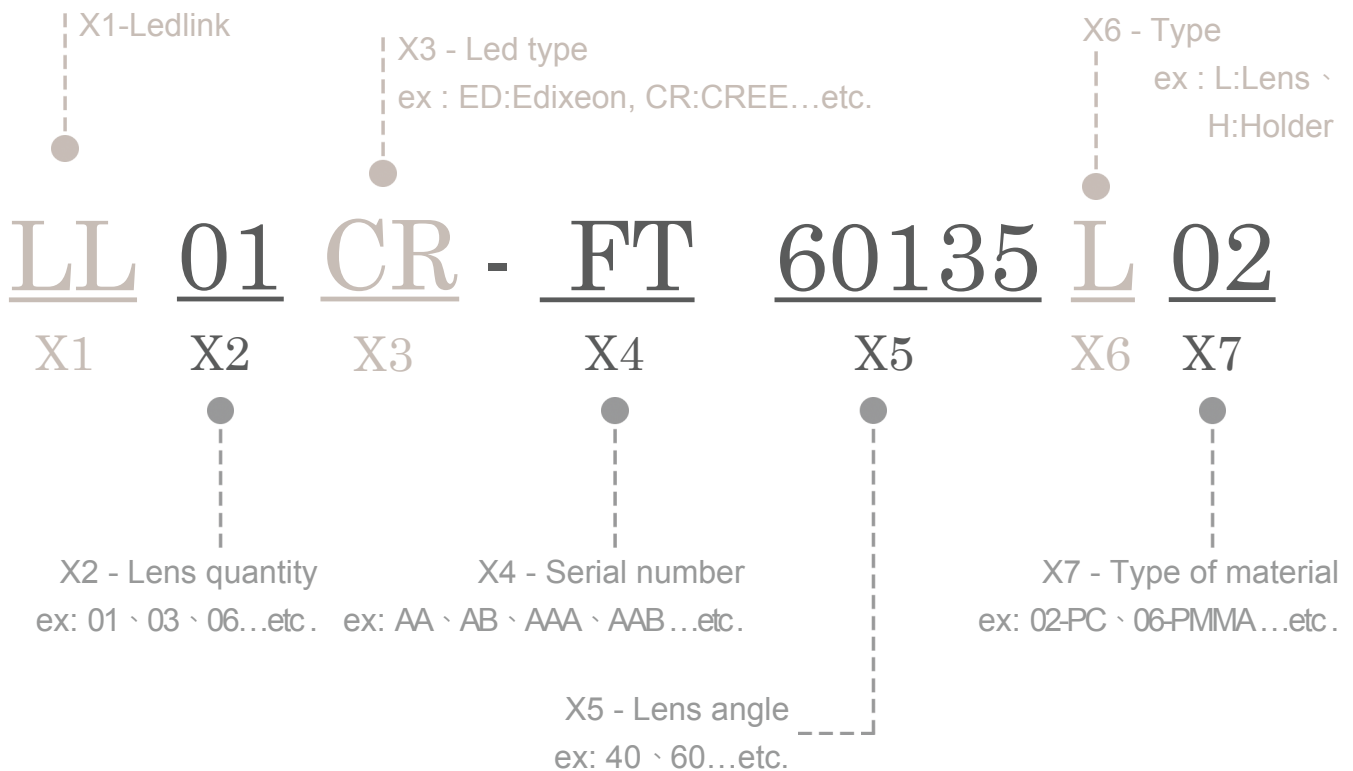
General Information & Product Nomenclature.....	P.2
Optical Specifications .....	P.3
Mechanical Specifications .....	P.4
Package Specifications .....	P.5

# LL01CR-FT60135L02

## General Information

- Lens Material Optical Grade PC
- Operating Temperature range -40°C~+110°C(upper limit +120°C)
- Storage Temperature range -40°C~+110°C(upper limit +120°C)
  - \* Average transmittance in visible spectrum 400nm~700nm>90%
- Usage and Maintenance:
  1. If necessary, clean lenses with mild soap, water and soft cloth.
  2. Never use any commercial cleaning solvents on lenses, like alcohol.
  3. Please handle or install lenses with wearing gloves, skin oils may damage lens or its optical characteristic.

## Product Nomenclature



# LL01CR-FT60135L02

## Optical Specifications

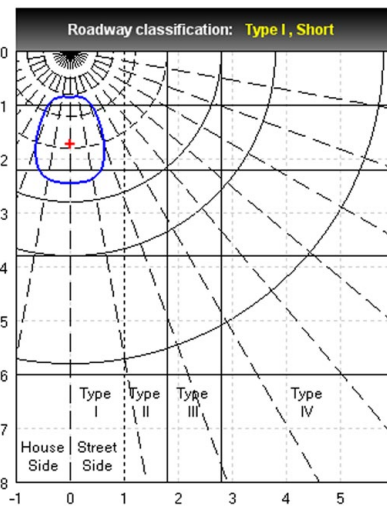
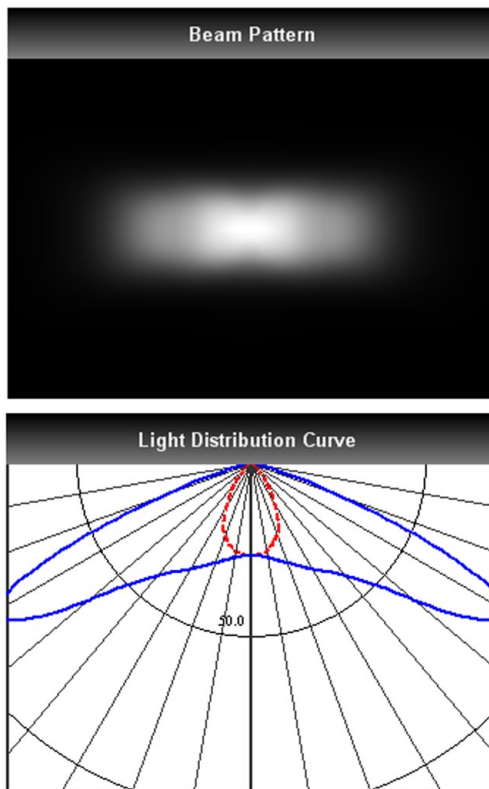


**Xlamp XP-E**

Note: (1) All the results of analysis are based on 0 degrees of elevation.  
 (2) Tolerance:  $\pm 10\%$ .  
 (3) Led Luminous Flux(lm): 100( $\pm 5\%$ ).

IES File: [Download](#)

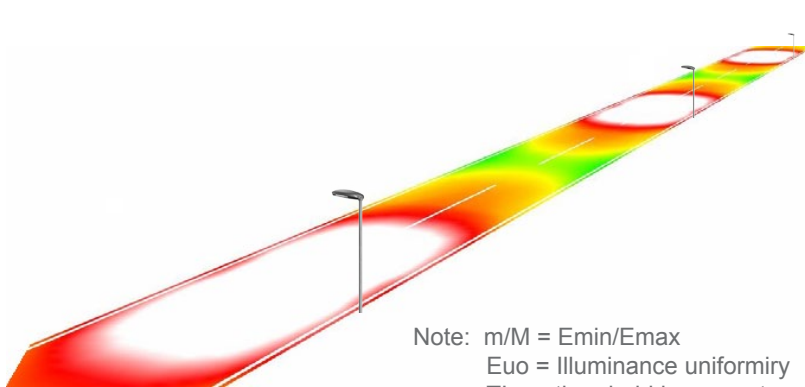
@elevation 0°



Elevation	Roadway Classification
0°	Type I, Short
5°	Type I, Short
10°	Type I, Short
15°	Type II, Short
20°	Type II, Short

### DIALux Simulation Result

Analyzed file: [Download](#)



#### Recommend configuration condition

Height	=	10m
Distance	=	40m
Roadwidth	=	7m
Elevation	=	0degree
Overhang	=	3.5m

#### Result

m/M	=	0.6
Euo	=	0.8
TI	=	8%
SR	=	0.7

\*The results would be similar if the configuration conditions are equally magnified or minified.

\*This testing result is obtained through testing the popular rank LED samples which provided by the original manufacturer. Hence, the testing results would be varied as the users choose same LED model but different rank.

\*The analyzed file require DIALux v4.10 and above to open.

# LL01CR-FT60135L02

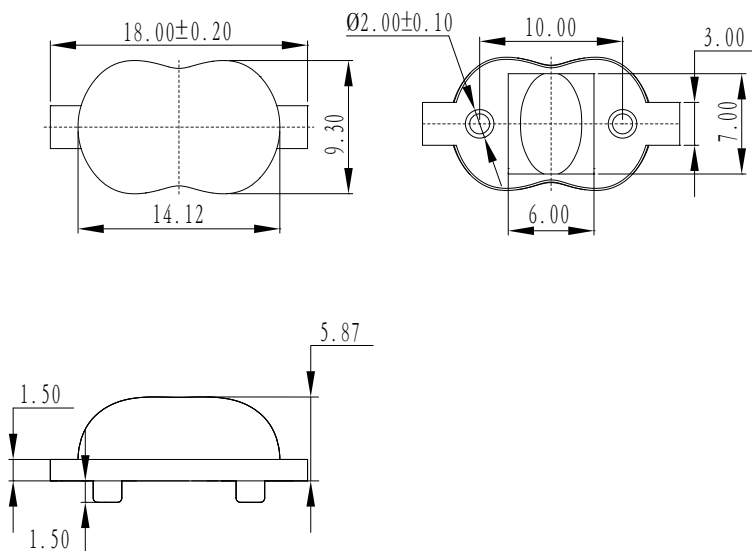
## Mechanical Specification

### 1. Fixing method

- Glue     
  Screw     
  Tape     
  Fixing-ring     
  Frame

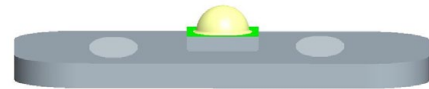
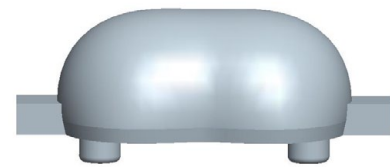
Note: (1) All dimensions are in mm.  
 (2) All measurements are  $\pm 0.15$  mm unless otherwise indicated.

### 2. Lens dimensions

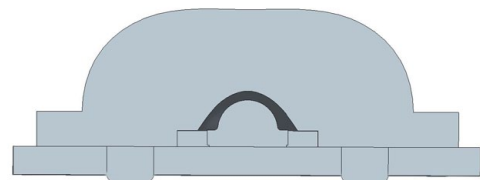


### 4. Lens assembly dimensions

### 3. Lens + Leds + MCPCB assembly instruction



### 5. View assembly lens with MCPCB:



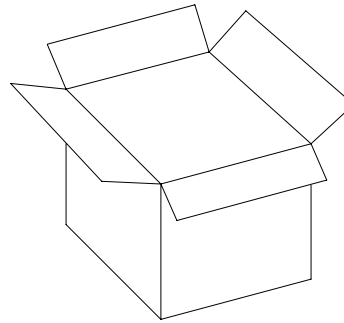
# LL01CR-FT60135L02

## Package Specifications

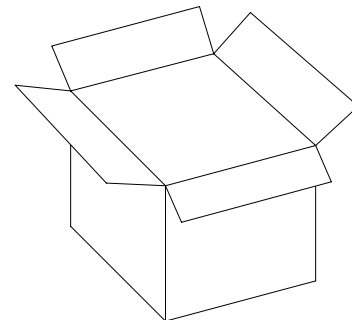
Item	Quantity	Total	Size(L*W*H)	G.W
Inner package	200pcs/plastic vacuum package	200pcs	15*20cm	1.0g
Inner box	40package/Inner box	8000pcs	29*29*22cm	
Outer box	2 Inner box/Outer box	16000pcs	60*31*25.8 cm	



200pcs/Plastic vacuum package



40 package/Inner box



2 Inner box/Outer box



**Note:**