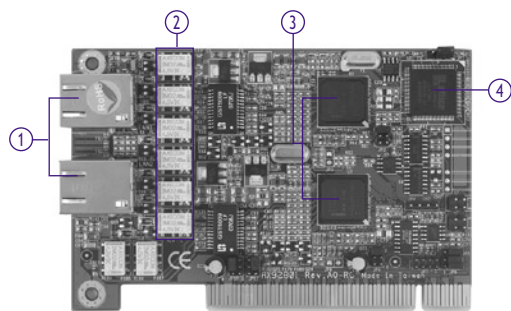


AX92801

Dual Intel® Gigabit LAN Bypass Adapter Card



1. LAN (RJ-45)
2. Hardware relay
3. Intel® 82541PI LAN chip
4. CPLD (complex programmable logical device)

Introduction

The AX92801 is a PCI 32-bit LAN bypass adapter card. It supports dual gigabit ports with WDT (watch dog timer) for LAN bypass feature enabling. If the NA device power shortage or hanging ever happen, it still can continue operation for two specify network segments. The adapter card can be migrated with concurrent network appliance platforms for VPN, UTM, other network security applications and embedded box solutions. AX92801 supports two Intel® 82541PI LAN chips and micro code for Linux kernel, administrators can easily implement program.

Specifications

Specification	
Interface	PCI 32-bit/33 MHz
LAN Chipset	Intel® 82541PI
Protocol	IEEE802.3ab, 1000Base-T IEEE802.3u, 100Base-TX IEEE802.3, 10Base-T
Media Interface	2-port RJ-45 w/ LED (Act/Link and transfer rate)
Cabling	Category 5/5e or above, 4-pair
Length	100 meters maximum
LAN	2 x 10/100/1000Mbps Ethernet (Intel® 82541PI) Supports LAN by pass (optional) Supports teaming feature Share same (32-bit/33 MHz) bus bandwidth through Arbi
Connector / Jumper	Two RJ-45 LAN connectors w/ LED
LAN Bypass	Supports SDK in Linux environment that is sample code for LAN bypass function enabling by customer's application program
Other Feature	Supports Auto MDI/MDI-X feature integrated 128K byte frame buffer memory
OS Compatibility	Linux Redhat Kernel 2.4 and 2.6, FreeBSD
Mechanical/ Environmental	
Form Factor	PCI 32bit/33MHz
LED	Power, HDD, Link/Act with transfer rate (RJ-45)
Operating Temp.	0°C ~ +60°C (32°F ~ 140°F)
Storage Temp.	-20°C ~ +70°C (-4°F ~ +158°F)
Humidity	10% - 95% RH, non-condensing
Dimensions	120 mm x 80 mm

Features

- Dual Gigabit ports with LAN bypass function
- Jumper selection by PICMG or arbiter control mode
- Supports WDT function for LAN by pass enabling
- Supports micro code for software integration in different Linux OS
- Supports PCI expansion slot for installation in NA-806 and NA-820 (for other NA platforms, the configuration is upon OEM/ODM requirement)
- Suitable LAN by pass function implementation for network appliance: VPN, UTM, network bandwidth controller, SSL/TLS, firewall and other embedded box applications

Ordering Information

AX92801 Dual Intel® Gigabit ports LAN bypass adapter card

Packing List

1 x Utility CD (user's manual and driver)

Dimensions

