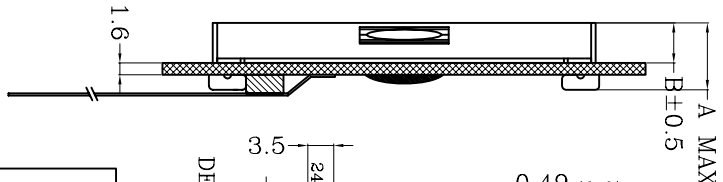
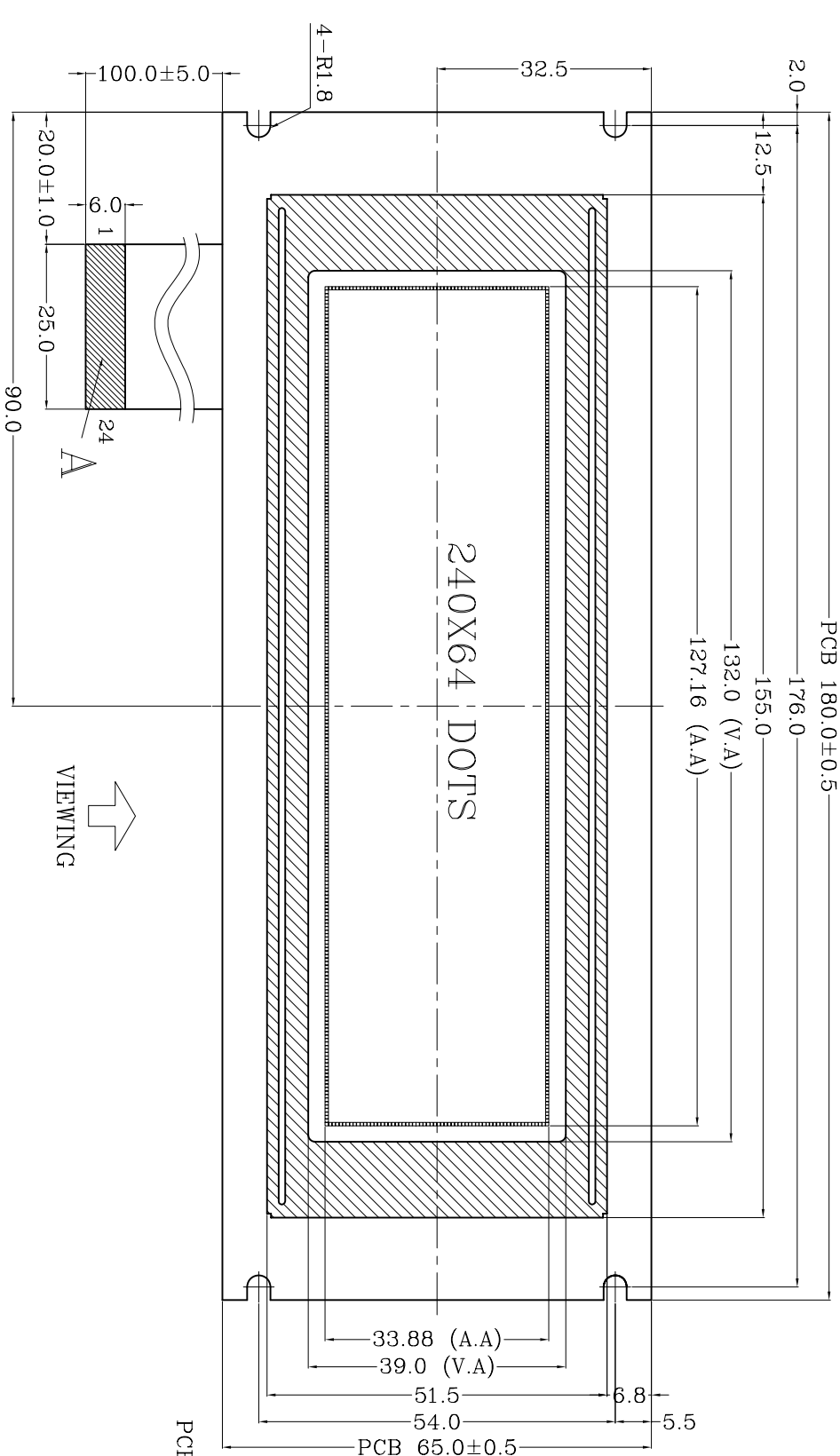


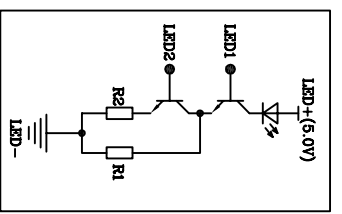
| | | |
|---------|----------------|------------|
| VERSION | CHANGE CONTENT | DATE |
| V00 | FIRST ISSUE | 2015-05-06 |

| | | |
|---------|-----|-----|
| TYPE | A | B |
| LED B/L | 9.5 | 5.4 |



DETAIL DOTS
SCALE: 10:1

DETAIL A BACK VIEW
SCALE: 1:1



| | | | | | | | | | | | | | | | | | | | | | | | | | |
|-----|------|-----|-----|----|-----|-----|---|-----|-----|-----|-----|-----|-----|-----|-----|-----|-----|-----|-----|------|-----|------|------|------|------|
| CN1 | PIN | 1 | 2 | 3 | 4 | 5 | 6 | 7 | 8 | 9 | 10 | 11 | 12 | 13 | 14 | 15 | 16 | 17 | 18 | 19 | 20 | 21 | 22 | 23 | 24 |
| | NAME | VSS | VDD | VO | D/I | R/W | E | DB0 | DB1 | DB2 | DB3 | DB4 | DB5 | DB6 | DB7 | CS1 | CS2 | CS3 | CS4 | /RST | VEE | LED1 | LED2 | LED+ | LED- |

SPECIFICATIONS

1. DISPLAY TYPE: FSTN/TRANSELECTIVE/POSITIVE/B+W
2. LCD DRIVING VOLTAGE: 12.9V
3. LOGIC VOLTAGE: 3.3V
4. VIEWING DIRECTION: 6 O'CLOCK
5. OPERATING TEMP: -20° C-70° C
6. STORAGE TEMP: -30° C-80° C
7. DRIVE MODE: 1/64 DUTY, 1/9 BIAS
8. BACKLIGHT: WHITE/SIDE BACKLIGHT/5.0V/150mA
9. OTHER:

NOTE:

LED Control instructions

| | | |
|-------|--------|--------|
| All | LED1=H | LED2=H |
| Half | LED1=H | LED2=L |
| Close | LED1=L | LED2=L |

DESCRIPTION:

SCALE: FIT

SHEET: 1 OF 1

PROJECTION
UNIT: mm

TINSHARP
INDUSTRIAL CO., LTD.

MODEL
TG24064A-31

TINSHARP
SERIAL NUMBER
ZHJ0240

| | | |
|-------|-------|-------|
| APP: | CHK: | DWN: |
| DATE: | DATE: | DATE: |

