

# Full-size PCI Express Mini Modules

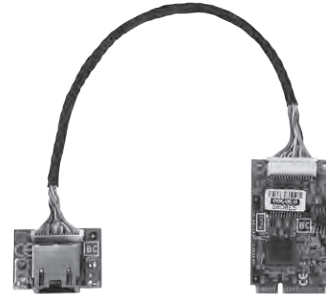
## AX92902

### Full-size PCI Express Mini Module with Gigabit LAN

Features	<ul style="list-style-type: none"> <li>• Supports 10/100/1000 Mbps transfer rates</li> <li>• Supports Wake-on LAN</li> <li>• Supports PXE Boot ROM</li> </ul>
Form factor	Full-size PCI Express Mini Card
Controller	Intel® i210IT
Specification	1 Gigabit Ethernet
Dimension	51 x 30 mm

### Ordering Information

AX92902+AX93287 (P/N: E392902101)	Full-size PCI Express Mini Module with Gigabit LAN
--------------------------------------	--



▲ AX92902+AX93287



▲ AX93287



▲ AX92902

Gigabit LAN

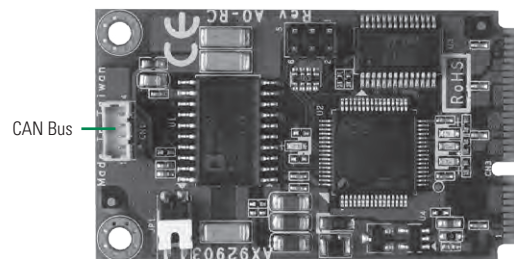
## AX92903

### Full-size PCI Express Mini Module with CAN Bus

Features	<ul style="list-style-type: none"> <li>• USB to 1 channel CANBus port</li> <li>• Support CANBus</li> </ul>
Form factor	Full-size PCI Express Mini Card
Specification	CAN 2.0A and CAN 2.0B
Dimension	51 x 30 mm

### Ordering Information

AX92903 (P/N: E392903100)	Full-size PCI Express Mini Module with CAN Bus
------------------------------	--



0
1
2
3
4
5
6
7

Accessories



# Full-size PCI Express Mini Modules

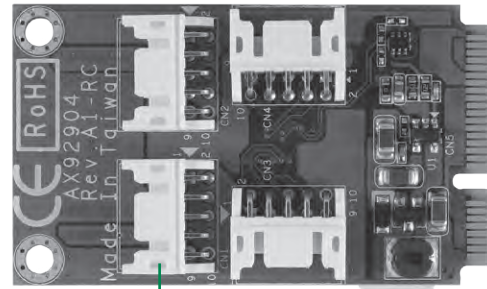
## AX92904

### Full-size PCI Express Mini Module with 32 bit DIO

Features	<ul style="list-style-type: none"> <li>Support four 8-bit TTL level DIO ports with +5V powered</li> <li>Each bit can be programmable as input or output</li> </ul>
From factor	Full-size PCI Express Mini Card
Specification	32 bit programmable DIO
Dimension	51 x 30 mm

### Ordering Information

AX92904 (P/N: E392904101)	Full-size PCI Express Mini Module with 32 bit DIO
------------------------------	---



8 bit Digital I/O x 4

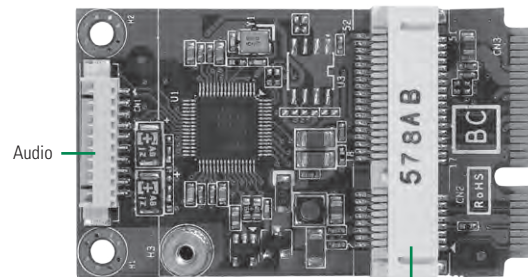
## AX92905

### Full-size PCI Express Mini Module with Audio

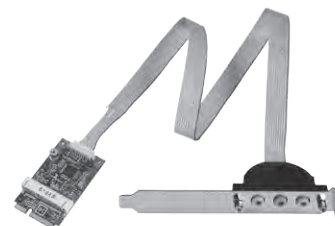
Features	<ul style="list-style-type: none"> <li>USB to Audio as Mic-In/Line-In/Line-Out</li> <li>Supports one half-size PCI Express Mini card slot (PCIe only)</li> </ul>
From factor	Full-size PCI Express Mini Card
Controller	Cmedia CM6510B
Specification	Specification Audio with Mic in/Line in/Line out and half-size PCI Express Mini Card slot (PCIe only)
Dimension	51 x 30 mm

### Ordering Information

AX92905 (P/N: E392905100)	Full-size PCI Express Mini Module with Audio and Half-size PCI Express Mini Card (PCIe only)
------------------------------	--



Full-size PCI Express Mini Card (PCIe only)



▲ AX92905 with cable