



Approved by:
Checked by:
Issued by:

SPECIFICATION

MODEL: QCC4A-SR433.92-50K

深圳市晶科鑫实业有限公司

SHENZHEN CRYSTAL TECHNOLOGY INDUSTRIAL CO., LTD.

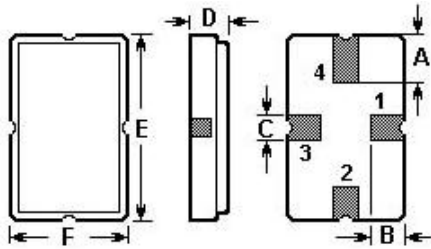
Add: RM#1805, East Wing, TianAn Hi-tech Plaza Phase2, TianAn Cyber Park Shenzhen, China

Tel: (86) 755 88352809 88352810 Fax: (86) 755 88353718 88352499

E-mail: jolly@q-crystal.com HTTP://www.q-crystal.com

The SJK433A is a true one- port , surface- acoustic- wave(SAW) resonator in a low- profile QCC4A case. It provides reliable , fundamental- mode , quartz frequency stabilization of fixed- frequency transmitters operating at 433.920 MHz.

1. Package Dimension (QCC4A)



Pin	Connection
1	Input / Output
3	Output / Input
2/4	Case Ground

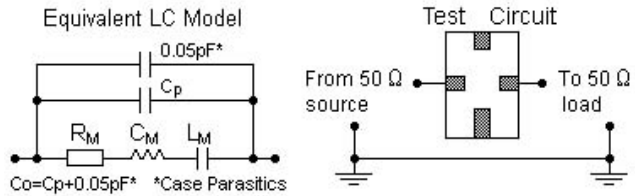
Sign	Data(unit: mm)
A	1.2
B	0.8
C	0.5
D	1.4
E	5.0
F	3.5

2. Marking

XXXX

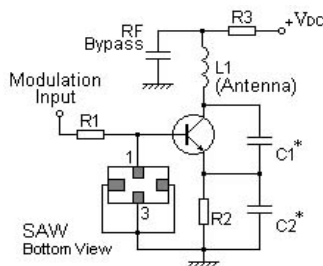
Color: Black or Blue

3. Equivalent LC Model and Test Circuit

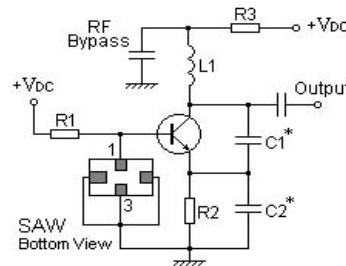


4. Typical Application Circuit

1) Typical Low-Power Transmitter Application

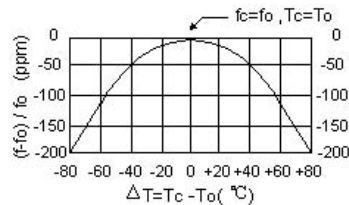


2) Typical Local Oscillator Application



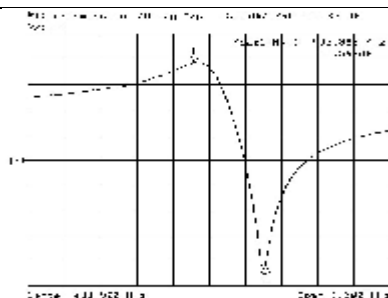
5. Typical Frequency Response

6. Temperature Characteristics



The curve shown above accounts for resonator contribution only and does not include oscillator temperature characteristics.

Add: RM#1805, East Wing, TianAn Hi-tech Plaza P
Tel: (86) 755 88352809 88352810 Fax: (86) 755 88353718 88352499
E-mail: sjk@q-crystal.com HTTP://www.q-crystal.com Shenzhen, China



7. Performance

7-1. Maximum Rating

Rating	Value	Units
CW RF Power Dissipation P	0	dBm
DC Voltage Between Terminals V_{DC}	± 30	V
Storage Temperature Range T_{stg}	-40 to +85	$^{\circ}C$

7-2. Electronic Characteristics

Characteristic		Sym	Minimum	Typical	Maximum	Units
Center Frequency (+25 $^{\circ}C$)	Absolute Frequency	f_c	433.845	433.92	433.995	Center Frequency
	Tolerance from 433.920 MHz	Δf_c		± 50		
Insertion Loss		I_L		1.5	1.8	dB
Quality Factor	Unloaded Q	Q_U		15974		Quality Factor
	50 Ω Loaded Q	Q_L		1900		
Temperature Stability	Turnover Temperature	T_o	25	40	55	Temperature
	Turnover Frequency	f_o		f_c		
	Frequency Temperature Coefficient	FTC		0.037		
Frequency Aging Absolute Value during the First Year		$ f_A $		≤ 10		ppm/yr
DC Insulation Resistance Between Any Two Pins			1.0			M Ω
RF Equivalent RLC Model	Motional Resistance	R_M		19	23	RF Equivalent
	Motional Inductance	L_M		79.137		
	Motional Capacitance	C_M		1.8019		
	Pin 1 to Pin 2 Static Capacitance	C_o		1.9		

CAUTION: Electrostatic Sensitive Device. Observe precautions for handling!

NOTES:

- The center frequency, f_c , is measured at the minimum IL point with the resonator in the 50 Ω test system.
- Unless noted otherwise, case temperature $T_c = +25^{\circ}C \pm 2^{\circ}C$.
- Frequency aging is the change in f_c with time and is specified at +65 $^{\circ}C$ or less. Aging may exceed the specification for prolonged temperatures above +65 $^{\circ}C$. Typically, aging is greatest the first year after manufacture, decreasing in subsequent years.
- Turnover temperature, T_o , is the temperature of maximum (or turnover) frequency, f_o . The nominal frequency at any case temperature, T_c , may be calculated from: $f = f_o [1 - FTC (T_o - T_c)^2]$.
- This equivalent RLC model approximates resonator performance near the resonant frequency and is provided for reference only. The capacitance C_o is the measured static (nonmotional) capacitance between the two terminals. The measurement includes case parasitic capacitance.

Add: RM#1805, East Wing, TianAn Hi-tech Plaza Phase2, TianAn Cyber Park Shenzhen, China

Tel: (86) 755 88352809 88352810 Fax: (86) 755 88353718 88352499

E-mail: sjk@q-crystal.com [HTTP://www.q-crystal.com](http://www.q-crystal.com)



-
6. Derived mathematically from one or more of the following directly measured parameters: f_c , I_L , 3 dB bandwidth, f_c versus T_c , and C_0 .
 7. The specifications of this device are based on the test circuit shown above and subject to change or obsolescence without notice.
 8. Typically, equipment utilizing this device requires emissions testing and government approval, which is the responsibility of the equipment manufacturer.
 9. Our liability is only assumed for the Surface Acoustic Wave (SAW) component(s) per se, not for applications, processes and circuits implemented within components or assemblies.
 10. For questions on technology, prices and delivery please contact our sales offices .