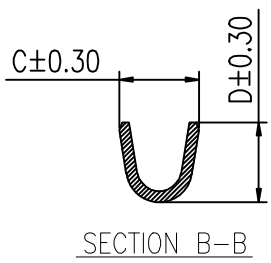
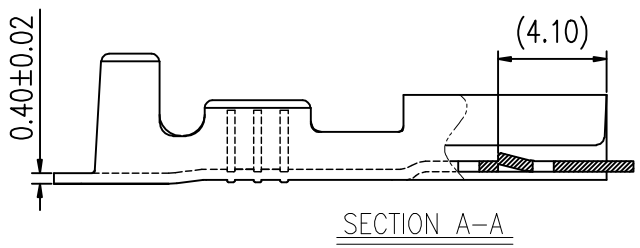
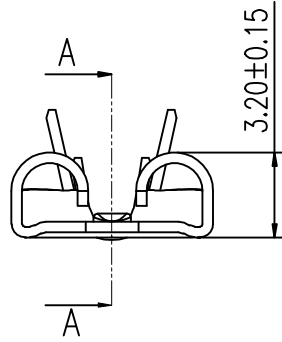
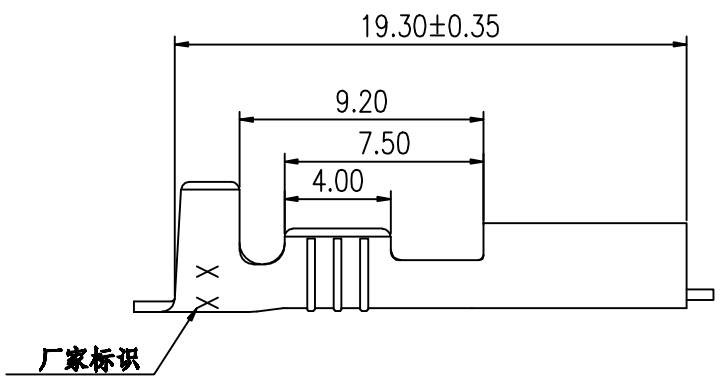
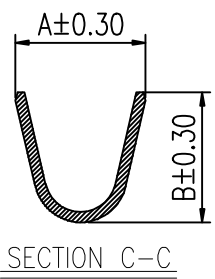
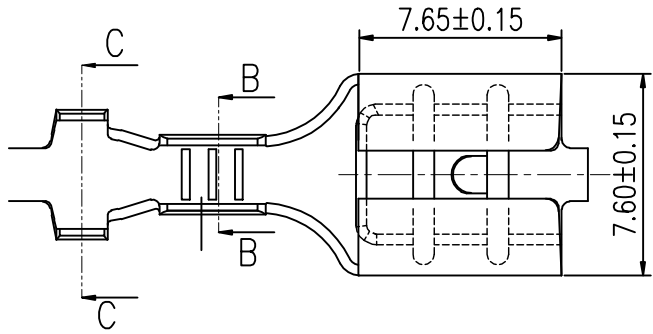


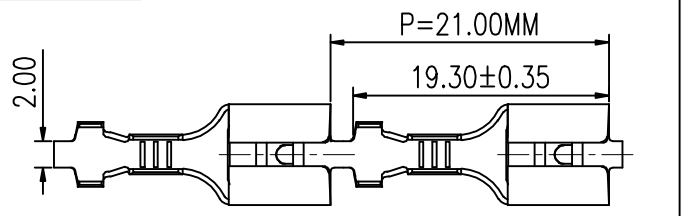
1	2	3	4	5	6	7	8
工程变更单号 ECN NO	变更说明 DESCRIPTION	版次 REV	发行时间 DATE	确认 ACCPY	审核 CHECK	批准 APPROVAL	
		B03					



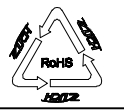
Technical requirement

1. Material: Brass(H65) T=0.40 ± 0.02mm
2. Appearance Requirements: NO Crushing,dirty,line remark.
3. Wire range: AWG22#-18#
4. Applicable male terminal material thickness: 0.8mm
5. Packing Qty: 7000pcs/reel.
6. Surface: Fog tin

料带图 1:2



		尺寸			
		A	B	C	D
顺成专用规格	TP25019K-2	4.30	3.80	2.70	2.10
250直插起低脚	TP25010K-2	4.25	4.15	3.00	3.00
250直插A形	TP25011K-2	4.90	4.90	3.00	3.00



未注尺寸公差按下表

尺寸	公差	尺寸	公差
DIM	TOL	DIM	TOL
X	±0.20	Z	±2°
.X	±0.15	.X	±1°
.XX	±0.10		
.XXX	±0.05		

ZUCH 浙江珠城科技股份有限公司
Zhejiang zuch Technology Co.,Ltd

文件编号 FILE NO	EC-T-484/433	日期 DATE	产品名称 TITLE	250直插端子
设计 DESIGN			物料料号 PART NO	详见表<->
审核 CHECK			版本 REV	B03
批准 APPROVAL			比例 SCALE	1:1

客户图