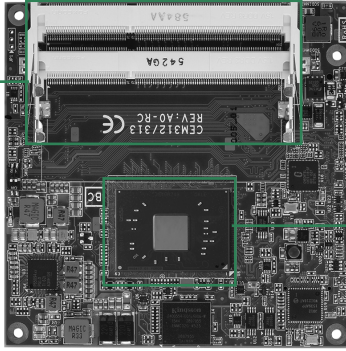


# CEM313

COM Express Type 6 Compact Module with Intel® Pentium® Processor N4200 & Celeron® Processor N3350

NEW

Double deck  
DDR3L SO-DIMM



Intel® Pentium® processor N4200  
& Celeron® processor N3350



## System

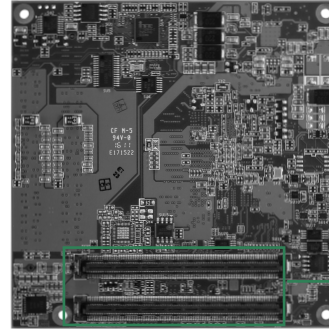
CPU	Intel® Quad/Dual core Pentium® processor N4200 2.5 GHz & Celeron® processor N3350 2.3 GHz onboard (Apollo Lake)
System Memory	2 x 204-pin SO-DIMMs support DDR3L-1600 max. up to 16GB
Chipset	SoC integrated
BIOS	AMI uEFI
SSD	eMMC 5.0 32 GB
Watchdog Timer	1-65535 sec.
Expansion Interface	4 x PCIe lanes (3 lanes while internal LAN is connected)
Battery Lithium	N/A
Power Input	ATX: 12V, +5VSB AT: 12V
Size	95 x 95 mm
Board Thickness	2.0 mm
Temperature	-20°C ~ +70°C (-4°F ~ 158°F), operation
Operation Humidity	10% ~ 95% relative humidity, non-condensing
Vibration	3.5 Grms

## I/O

MIO	1 x LPC interface 1 x SPI interface 2 x Serial TX/RX 1 x I <sup>2</sup> C
SATA	2 x SATA-600
Hardware Monitoring	Yes
Ethernet	1 port as 10/100/1000 Mbps supports Wake-on-LAN, PXE Boot ROM with Intel® i211AT
Audio	HD link interface to baseboard for Codec
USB	4 x USB 3.0 8 x USB 2.0
TPM	ST for trusted platform
SMBus	Yes
Digital I/O	4 channels IN & 4 channels OUT
Smart Battery	Yes

## Features

- Intel® Pentium® processor N4200 & Celeron® processor N3350 (Apollo Lake)
- 2 DDR3L-1600 SO-DIMMs support max. up to 16GB
- Max. up to 4 lanes of PCIe
- 2 SATA-600
- 2 USB 3.0 and 8 USB 2.0



COM Express  
interface connector

## Display

Chipset	Intel® Gen 9 Graphics Engine Supports Gfx - DX12.0, OCL 2.0, OGL 4.3
Display Interface	1 x DDI (DP, HDMI, DVI); VGA optional 1 x LVDS; 18/24-bit single channel (eDP option)

## Packing List

Quick installation guide; user's manual/utility CD

## Ordering Information

### Standard

CEM313PG-N4200 (P/N: N/A)	COM Express type 6 compact module with Intel® Pentium® processor N4200 2.5 GHz, DDI/LVDS, USB 3.0 and 10/100/1000 Mbps Ethernet
CEM313PG-N3350 (P/N: N/A)	COM Express type 6 compact module with Intel® Celeron® processor N3350 2.3 GHz, DDI/LVDS, USB 3.0 and 10/100/1000 Mbps Ethernet

### Optional Accessories

CEB94006 (P/N: E394006100)	CEB94006 ATX form factor type 6 evaluation board
-------------------------------	--

SBC  
Services  
and Solutions

2

System  
on  
Modules

Embedded  
SBCs  
>EPIC

Embedded  
SBCs  
>3.5" Capa

Embedded  
SBCs  
>Nano-ITX

Embedded  
SBCs  
>Pico-ITX

Embedded  
SBCs  
>PC/104

Industrial  
Motherboards

Slot CPU  
Cards

ARM  
Embedded  
Boards

Accessories

Appendix

