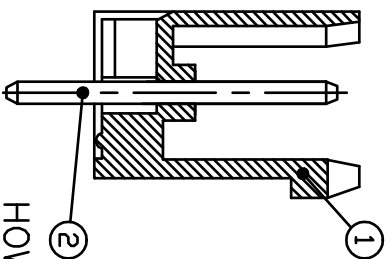
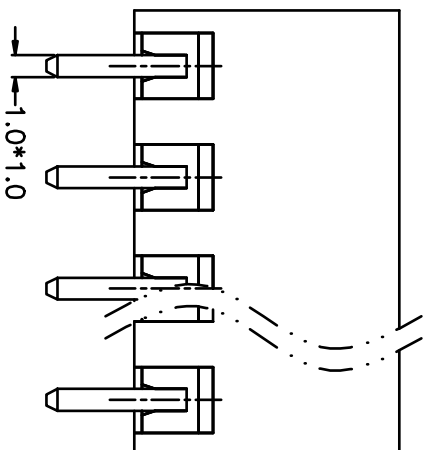
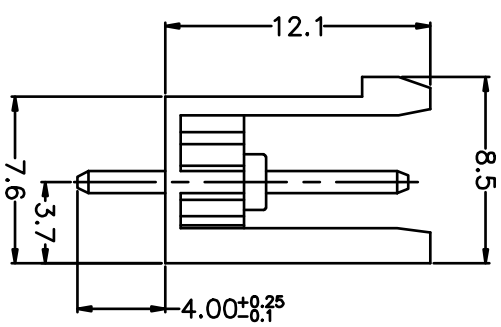
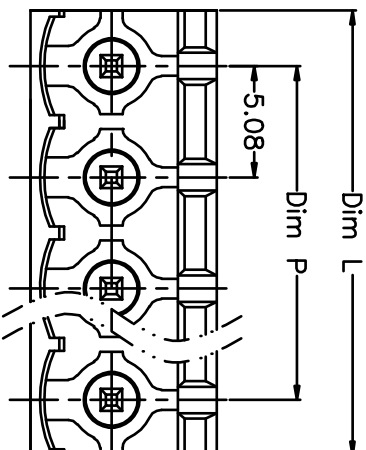


REV.	DESCRIPTION	DATE	DRAWN	APPROVED
A1	DWG.REL	2016/10/7	FANG	YANG

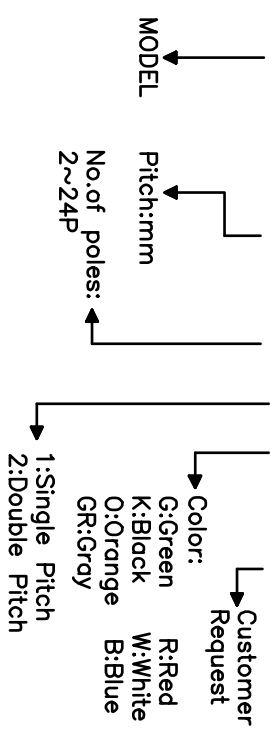


- Material  
 ØHousing : PA66, UL94V-0  
 ØPin header : Brass, Tin plated

- Electrical  
 UL IEC  
 Rated voltage : 300V 320V  
 Rated current : 15A 20A  
 Insulation resistance: 500MΩ/DC500V  
 Withstanding Voltage : AC2000V/1min

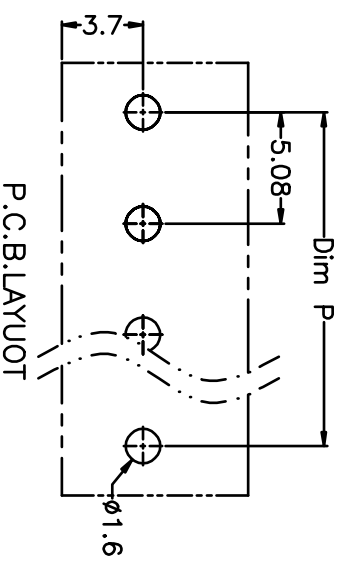
- Mechanical  
 Operating temperature: -40°C ~ +105°C  
 Soldering temperature: 250°C ± 5 / 5sec

HOW TO ORDER  
**KF2EDGV-X-5.08-XXP-1 X-XXXXXX**



N=Number of Poles  
 Dim P=(N-1)x5.08  
 Dim L=Nx5.08

Poles Dim	Dim P	Dim L
2-6P	±0.10	±0.15
7-12P	±0.20	±0.20
13-18P	±0.25	±0.30
19-24P	±0.30	±0.40



GENERAL TOLERANCE ANGLE TOLERANCE

X.	±0.5	X.	±5'
X	±0.3	X'	±3'
.XX	±0.1	.XX'	±1'

PROJECTION UNITS

1:1	mm
-----	----

TITLE

KF2EDGV-X-5.08-XXP
--------------------

DRAWING TYPE CUSTOMER

SCALE	1:1	SHEET	1 OF 1
-------	-----	-------	--------

DRAWING NO. XP0012016-xxxx

**凯峰** 慈溪市凯峰电子有限公司  
 CIXI KAIFENG ELECTRONIC CO.,LTD